

REPLACEMENT PARTS MANUAL

INDUCED DRAFT  
GAS FIRED HORIZONTAL FURNACE  
MODELS: ISG SERIES

Manual 2110-860

Revision C

Date 12-15-93

Supersedes 06-29-92

\*\*\*\*\*  
\* GENERAL NOTES \*  
\*\*\*\*\*

\*Revised and/or additional pages may be issued from time to time.  
\*A complete and current manual consists of pages dated as shown in the following index.

\*\*\*\*\*  
\*\* INDEX \*\*  
\*\*\*\*\*

<u>Page Description</u>	<u>Page</u>	<u>Date</u>	<u>Supersedes</u>
Exploded View	1	07-09-91	
Usage List	2	12-15-93	08-07-91
Usage List	3	06-29-92	07-09-91
Usage List	4	06-29-92	07-09-91

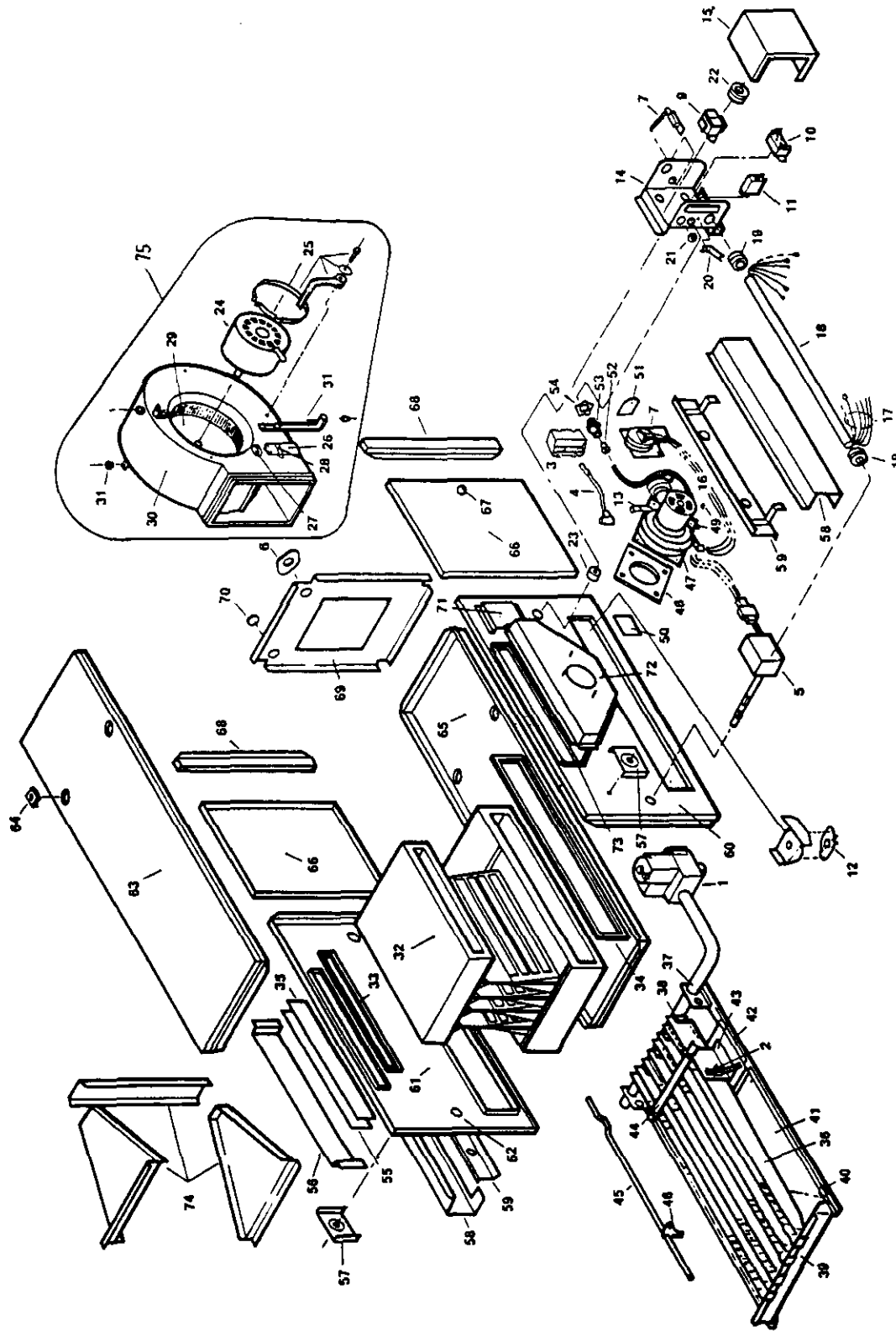
\*\*\*\*\*  
\*\*\* IMPORTANT \*\*\*  
\*\*\*\*\*

Contact the installing and/or local Bard distributor for all parts requirements. Make sure you have the complete model and serial number available from the unit rating plate.

BARD MANUFACTURING COMPANY

BRYAN, OHIO 43506

207794



**HIGH EFFICIENCY INDUCED DRAFT HORIZONTAL GAS FURNACE**

Date: 07-09-91  
 Supersedes:

Dwg. No.	Part No.	Description	I S G O 4 0 0 D 3 6 A	I S G O 6 0 0 D 3 6 A	I S G O 8 0 0 D 4 8 A	I S G O 1 0 0 D 6 0 A	I S G O 1 2 0 D 6 0 A
1	9043-071	Gas Valve VR8204 Nat.	x	x	x	x	x
2	9043-070	Pilot Burner Q345 Nat.	x	x	x	x	x
3	5051-073	Ignition Module S8600H	x	x	x	x	x
4	9043-119	Ignition Cable 25"	x	x	x	x	x
5	8620-082	Fan/Limit Control	x	x	x	x	x
6	9043-054	Auxiliary Limit Open 160 Close 130	x	x	x	x	x
7	9043-139	Pressure Switch	x				
7	9043-140	Pressure Switch		x			
7	9043-141	Pressure Switch			x		
7	9043-142	Pressure Switch				x	
7	9043-143	Pressure Switch					x
8	9043-055	Blower Door Interlock Switch	x	x	x	x	x
9	9043-056	Transformer 40VA	x	x	x	x	x
10	9043-052	Blower Relay	x	x	x	x	x
11	9043-144	Draft Inducer Relay	x	x	x	x	x
12	9043-120	Burner Limit Switch	2	2	2	2	2
24	9043-047	Motor 1/4 HP 3-Speed 115V	x				
24	9043-124	Motor 1/4 HP 3-Speed 115V		x			
24	9043-048	Motor 1/3 HP 3-Speed 115V			x		
24	9043-049	Motor 1/2 HP 3-Speed 115V				x	x
25	9043-050	Motor Mounting Hardware Kit	x				
25	9043-051	Motor Mounting Hardware Kit		x	x	x	x
26	8552-004	Capacitor 7.5 MFD 370V	x	x	x		
26	8552-005	Capacitor 10 MFD 370V				x	x
29	9043-039	Blower Wheel 10 x 4	x				
29	9043-040	Blower Wheel 10 x 6		x			
29	9043-041	Blower Wheel 10 x 8			x		
29	9043-042	Blower Wheel 10 x 10				x	x
30	9043-046	10 x 4 Blower Housing and Cutoff	x				
30	9043-043	10 x 6 Blower Housing and Cutoff		x			
30	9043-044	10 x 8 Blower Housing and Cutoff			x		
30	9043-045	10 x 10 Blower Housing and Cutoff				x	x
32	9043-145	Heat Exchanger Assembly 2-Section	x				
32	9043-146	Heat Exchanger Assembly 3-Section		x			
32	9043-147	Heat Exchanger Assembly 4-Section			x		
32	9043-148	Heat Exchanger Assembly 5-Section				x	
32	9043-149	Heat Exchanger Assembly 6-Section					x
33	9043-130	Collector Box Gasket	2	2	2	2	2
34	9043-131	Burner Box Gasket	2	2	2	2	2
35	9043-132	Collector Box Plate Gasket	x	x	x	x	x
36	9043-022	Main Burner Venturi	2	3	4	5	6
37	9043-190	2 Section Manifold w/2.10 MM Orifices(Std Non-NOx)	x				
37	9043-191	3 Section Manifold w/2.10 MM Orifices(Std Non-NOx)		x			
37	9043-192	4 Section Manifold w/2.10 MM Orifices(Std Non-NOx)			x		
37	9043-193	5 Section Manifold w/2.10 MM Orifices(Std Non-NOx)				x	
37	9043-194	6 Section Manifold w/2.10 MM Orifices(Std Non-NOx)					x
37	9043-195	2 Section Manifold w/2.05 MM Orifices (NOx)	x				
37	9043-196	3 Section Manifold w/2.05 MM Orifices (NOx)		x			
37	9043-197	4 Section Manifold w/2.05 MM Orifices (NOx)			x		
37	9043-198	5 Section Manifold w/2.05 MM Orifices (NOx)				x	
37	9043-199	6 Section Manifold w/2.05 MM Orifices (NOx)					x

Date: 12-15-93  
Supersedes: 09-29-91  
2110-860  
Page: 2

Dwg. No.	Part No.	Description	I S G O 4 0 0 D 3 6 A	I S G O 6 0 0 D 3 6 A	I S G O 8 0 0 D 4 8 A	I S G O 1 0 0 D 6 0 A	I S G O 1 0 0 D 6 0 A
38	9043-200	Main Burner Orifice 2.10 MM (Std Non-NOx)	2	3	4	5	6
38	9043-201	Main Burner Orifice 2.05 MM (NOx)	2	3	4	5	6
44	9043-001	Crossover Angle 2-Section	x				
44	9043-002	Crossover Angle 3-Section		x			
44	9043-003	Crossover Angle 4-Section			x		
44	9043-004	Crossover Angle 5-Section				x	
44	9043-005	Crossover Angle 6-Section					x
47	9043-157	Draft Inducer Assembly *	x	x	x	x	x
48	9043-158	Draft Inducer Assembly Gasket	x	x	x	x	x
50	9043-159	Inlet Restrictor Plate	x				N/R
50	9043-160	Inlet Restrictor Plate		x			N/R
50	9043-161	Inlet Restrictor Plate			x		N/R
50	9043-162	Inlet Restrictor Plate				x	N/R
51	9043-163	Outlet Restrictor Plate	x			N/R	N/R
51	9043-164	Outlet Restrictor Plate		x		N/R	N/R
51	9043-165	Outlet Restrictor Plate			x	N/R	N/R
55	9043-166	Collector Box Plate	x	x	x	x	x
56	9043-167	Collector Box Heat Shield	x	x	x	x	x
57	9043-155	Collector Box Heat Deflector	2	2	2	2	2
58	9043-094	Burner Cover	2	2	2	2	2
59	9043-168	Burner Side Shield	2	2	2	2	2
60	9043-134	Front Panel	x	x	x	x	x
61	9043-135	Rear Panel	x	x	x	x	x
63	9043-169	Top Panel	x				
63	9043-170	Top Panel		x			
63	9043-171	Top Panel			x		
63	9043-126	Top Panel				x	
63	9043-172	Top Panel					x
65	9043-173	Bottom Panel	x				
65	9043-174	Bottom Panel		x			
65	9043-175	Bottom Panel			x		
65	9043-176	Bottom Panel				x	
65	9043-177	Bottom Panel					x
66	9043-136	Burner Door	2	2	2	2	2
68	9043-137	Corner Post	2	2	2	2	2
69	9043-073	Blower Panel	x				
69	9043-178	Blower Panel		x			
69	9043-179	Blower Panel			x		
69	9043-180	Blower Panel				x	
69	9043-181	Blower Panel					x
72	9043-182	Induced Draft Collector Box Assembly	x	x	x	x	x
73	9043-183	Induced Draft Collector Box Assembly Gasket	x	x	x	x	x
74	9040-041	Filter Frame Kit	x				
74	9040-042	Filter Frame Kit		x			
74	9040-043	Filter Frame Kit			x		
74	9040-044	Filter Frame Kit				x	
74	9040-045	Filter Frame Kit					x

Dwg. No.	Part No.	Description	I S G O 4 0 0 D D 3 6 A	I S G O 6 0 0 D D 3 6 A	I S G O 8 0 0 D D 4 8 A	I S G O 0 0 0 D D 6 0 A	I S G O 1 0 0 D D 6 0 A
N/S	9010-028	Propane Conversion Kit	x	x	x	x	x
N/S	9043-184	Shipping Carton	x				
N/S	9043-115	Shipping Carton		x			
N/S	9043-114	Shipping Carton			x		
N/S	9043-185	Shipping Carton				x	
N/S	9043-092	Shipping Carton					x
75	9043-186	Complete Blower Assembly	x				
75	9043-187	Complete Blower Assembly		x			
75	9043-188	Complete Blower Assembly			x		
75	9043-189	Complete Blower Assembly				x	
75	9043-110	Complete Blower Assembly					x

\*9047-157 includes all parts. Dwg. No. 48-54.

N/R - None required.

N/S - Not shown.

Date: 07-09-91  
Supersedes:

