

REPLACEMENT PARTS MANUAL

INDUCED DRAFT GAS FIRED HORIZONTAL FURNACE MODELS: ISG SERIES

Manual 2110-860

Revision D

Date 10-03-94

Supersedes 12-15-94

* GENERAL NOTES *

*Revised and/or additional pages may be issued from time to time.
*A complete and current manual consists of pages dated as shown in the following index.

** INDEX **

<u>Page Description</u>	<u>Page</u>	<u>Date</u>	<u>Supersedes</u>
Exploded View	1	07-09-91	
Usage List	2	10-03-94	12-15-93
Usage List	3	06-29-92	07-09-91
Usage List	4	06-29-92	07-09-91

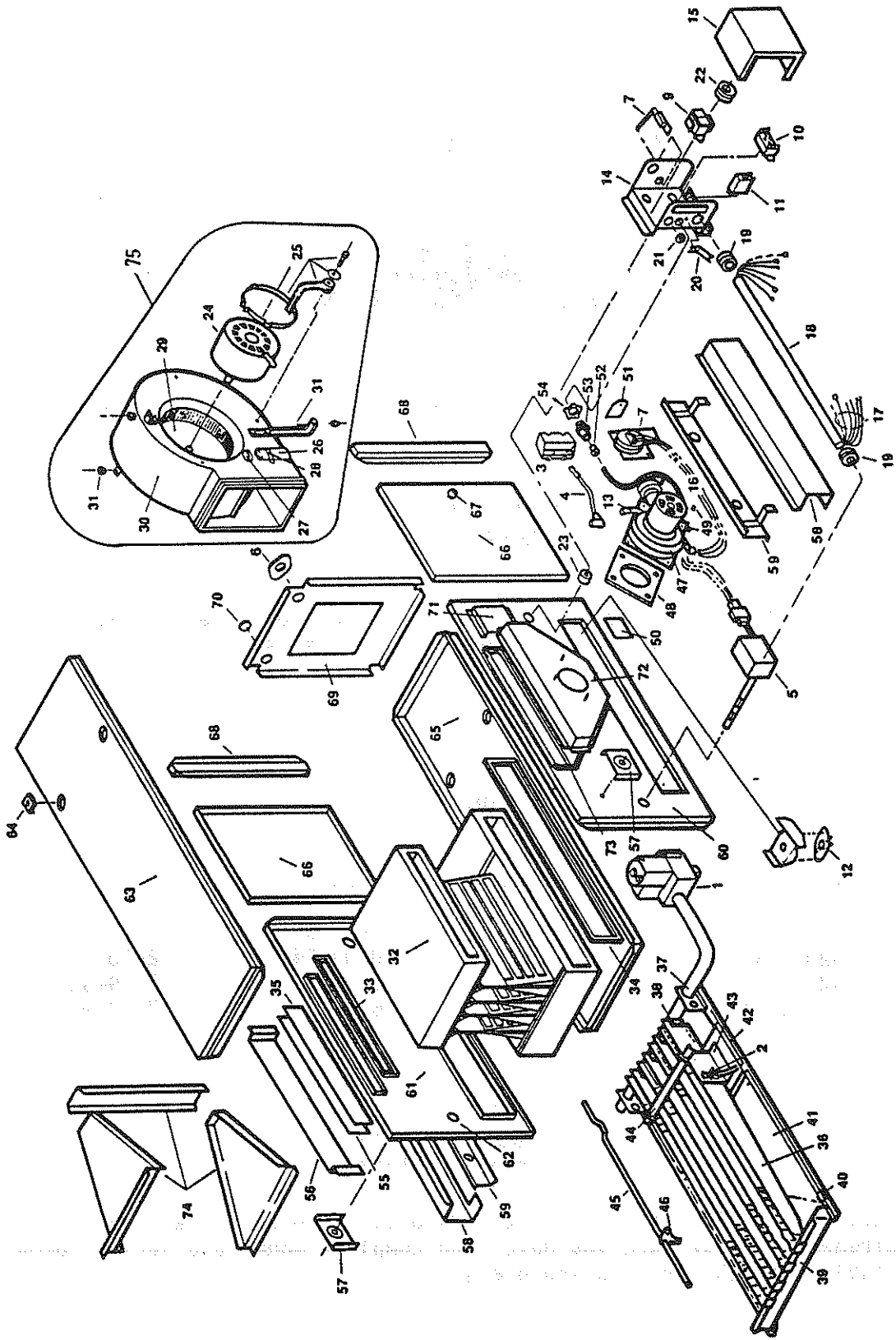
*** IMPORTANT ***

Contact the installing and/or local Bard distributor for all parts requirements. Make sure you have the complete model and serial number available from the unit rating plate.

BARD MANUFACTURING COMPANY

BRYAN, OHIO 43506

207794



HIGH EFFICIENCY INDUCED DRAFT HORIZONTAL GAS FURNACE

Date: 07-09-91
 Supersedes:

Dwg. No.	Part No.	Description	I S G O 4 0 0 D 3 6 A	I S G O 6 0 0 D 3 6 A	I S G O 8 0 0 D 4 8 A	I S G O 1 0 0 D 6 0 A	I S G O 2 0 0 D 6 0 A
1	9043-071	Gas Valve VR8204 Nat.	x	x	x	x	x
2	9043-070	Pilot Burner Q345 Nat.	x	x	x	x	x
3	5651-093	Ignition Module S8600M	x	x	x	x	x
4	9043-119	Ignition Cable 25"	x	x	x	x	x
5	8620-082	Fan/Limit Control	x	x	x	x	x
6	9043-054	Auxiliary Limit Open 160 Close 130	x	x	x	x	x
7	9043-139	Pressure Switch	x				
7	9043-140	Pressure Switch		x			
7	9043-141	Pressure Switch			x		
7	9043-142	Pressure Switch				x	
7	9043-143	Pressure Switch					x
8	9043-055	Blower Door Interlock Switch	x	x	x	x	x
9	9043-056	Transformer 40VA	x	x	x	x	x
10	9043-052	Blower Relay	x	x	x	x	x
11	9043-144	Draft Inducer Relay	x	x	x	x	x
12	9043-120	Burner Limit Switch	2	2	2	2	2
24	9043-047	Motor 1/4 HP 3-Speed 115V	x				
24	9043-124	Motor 1/4 HP 3-Speed 115V		x			
24	9043-048	Motor 1/3 HP 3-Speed 115V			x		
24	9043-049	Motor 1/2 HP 3-Speed 115V				x	x
25	9043-050	Motor Mounting Hardware Kit	x				
25	9043-051	Motor Mounting Hardware Kit		x	x	x	x
26	8552-004	Capacitor 7.5 MFD 370V	x	x	x		
26	8552-005	Capacitor 10 MFD 370V				x	x
29	9043-039	Blower Wheel 10 x 4	x				
29	9043-040	Blower Wheel 10 x 6		x			
29	9043-041	Blower Wheel 10 x 8			x		
29	9043-042	Blower Wheel 10 x 10				x	x
30	9043-046	10 x 4 Blower Housing and Cutoff	x				
30	9043-043	10 x 6 Blower Housing and Cutoff		x			
30	9043-044	10 x 8 Blower Housing and Cutoff			x		
30	9043-045	10 x 10 Blower Housing and Cutoff				x	x
32	9043-145	Heat Exchanger Assembly 2-Section	x				
32	9043-146	Heat Exchanger Assembly 3-Section		x			
32	9043-147	Heat Exchanger Assembly 4-Section			x		
32	9043-148	Heat Exchanger Assembly 5-Section				x	
32	9043-149	Heat Exchanger Assembly 6-Section					x
33	9043-130	Collector Box Gasket	2	2	2	2	2
34	9043-131	Burner Box Gasket	2	2	2	2	2
35	9043-132	Collector Box Plate Gasket	x	x	x	x	x
36	9043-022	Main Burner Venturi	2	3	4	5	6
37	9043-190	2 Section Manifold w/2.10 MM Orifices(Std Non-NOx)	x				
37	9043-191	3 Section Manifold w/2.10 MM Orifices(Std Non-NOx)		x			
37	9043-192	4 Section Manifold w/2.10 MM Orifices(Std Non-NOx)			x		
37	9043-193	5 Section Manifold w/2.10 MM Orifices(Std Non-NOx)				x	
37	9043-194	6 Section Manifold w/2.10 MM Orifices(Std Non-NOx)					x
37	9043-195	2 Section Manifold w/2.05 MM Orifices (NOx)	x				
37	9043-196	3 Section Manifold w/2.05 MM Orifices (NOx)		x			
37	9043-197	4 Section Manifold w/2.05 MM Orifices (NOx)			x		
37	9043-198	5 Section Manifold w/2.05 MM Orifices (NOx)				x	
37	9043-199	6 Section Manifold w/2.05 MM Orifices (NOx)					x

Date: 10-03-94
Supersedes: 12-15-93
2110-860
Page: 2

Dwg. No.	Part No.	Description	I S G O 4 0 D 3 6 A	I S G O 6 0 D 3 6 A	I S G O 8 0 D 4 8 A	I S G O 1 0 D 6 0 A	I S G O 2 0 D 6 0 A
38	9043-200	Main Burner Orifice 2.10 MM (Std Non-NOx)	2	3	4	5	6
38	9043-201	Main Burner Orifice 2.05 MM (NOx)	2	3	4	5	6
44	9043-001	Crossover Angle 2-Section	x				
44	9043-002	Crossover Angle 3-Section		x			
44	9043-003	Crossover Angle 4-Section			x		
44	9043-004	Crossover Angle 5-Section				x	
44	9043-005	Crossover Angle 6-Section					x
47	9043-157	Draft Inducer Assembly *	x	x	x	x	x
48	9043-158	Draft Inducer Assembly Gasket	x	x	x	x	x
50	9043-159	Inlet Restrictor Plate	x				N/R
50	9043-160	Inlet Restrictor Plate		x			N/R
50	9043-161	Inlet Restrictor Plate			x		N/R
50	9043-162	Inlet Restrictor Plate				x	N/R
51	9043-163	Outlet Restrictor Plate	x			N/R	N/R
51	9043-164	Outlet Restrictor Plate		x		N/R	N/R
51	9043-165	Outlet Restrictor Plate			x	N/R	N/R
55	9043-166	Collector Box Plate	x	x	x	x	x
56	9043-167	Collector Box Heat Shield	x	x	x	x	x
57	9043-155	Collector Box Heat Deflector	2	2	2	2	2
58	9043-094	Burner Cover	2	2	2	2	2
59	9043-168	Burner Side Shield	2	2	2	2	2
60	9043-134	Front Panel	x	x	x	x	x
61	9043-135	Rear Panel	x	x	x	x	x
63	9043-169	Top Panel	x				
63	9043-170	Top Panel		x			
63	9043-171	Top Panel			x		
63	9043-126	Top Panel				x	
63	9043-172	Top Panel					x
65	9043-173	Bottom Panel	x				
65	9043-174	Bottom Panel		x			
65	9043-175	Bottom Panel			x		
65	9043-176	Bottom Panel				x	
65	9043-177	Bottom Panel					x
66	9043-136	Burner Door	2	2	2	2	2
68	9043-137	Corner Post	2	2	2	2	2
69	9043-073	Blower Panel	x				
69	9043-178	Blower Panel		x			
69	9043-179	Blower Panel			x		
69	9043-180	Blower Panel				x	
69	9043-181	Blower Panel					x
72	9043-182	Induced Draft Collector Box Assembly	x	x	x	x	x
73	9043-183	Induced Draft Collector Box Assembly Gasket	x	x	x	x	x
74	9040-041	Filter Frame Kit	x				
74	9040-042	Filter Frame Kit		x			
74	9040-043	Filter Frame Kit			x		
74	9040-044	Filter Frame Kit				x	
74	9040-045	Filter Frame Kit					x

Date: 06-29-92

Supersedes: 07-09-91

2110-860

Page: 3

Dwg. No.	Part No.	Description	I S G 0 4 0 0 3 6 A	I S G 0 6 0 0 3 6 A	I S G 0 8 0 0 4 8 A	I S G 1 0 0 6 0 A	I S G 1 2 0 0 6 0 A
N/S	9010-028	Propane Conversion Kit	x	x	x	x	x
N/S	9043-184	Shipping Carton	x				
N/S	9043-115	Shipping Carton		x			
N/S	9043-114	Shipping Carton			x		
N/S	9043-185	Shipping Carton				x	
N/S	9043-092	Shipping Carton					x
75	9043-186	Complete Blower Assembly	x				
75	9043-187	Complete Blower Assembly		x			
75	9043-188	Complete Blower Assembly			x		
75	9043-189	Complete Blower Assembly				x	
75	9043-110	Complete Blower Assembly					x

*9047-157 includes all parts. Dwg. No. 48-54.

N/R = None required.

N/S = Not shown.

Date: 07-09-91
Supersedes:

2110-860
Page: 4

