

REPLACEMENT PARTS MANUAL

HIGH ECONOMY
GAS FIRED FURNACES
MODELS: NCH050D30A, NCH065D36A
NCH080D48A, NCH095D60A

Manual 2110-864

Revision A

Date 10-12-92

Supersedes 7-29-92

* GENERAL NOTES *

*Revised and/or additional pages may be issued from time to time.
*A complete and current manual consists of pages dated as shown in the following index.

** INDEX **

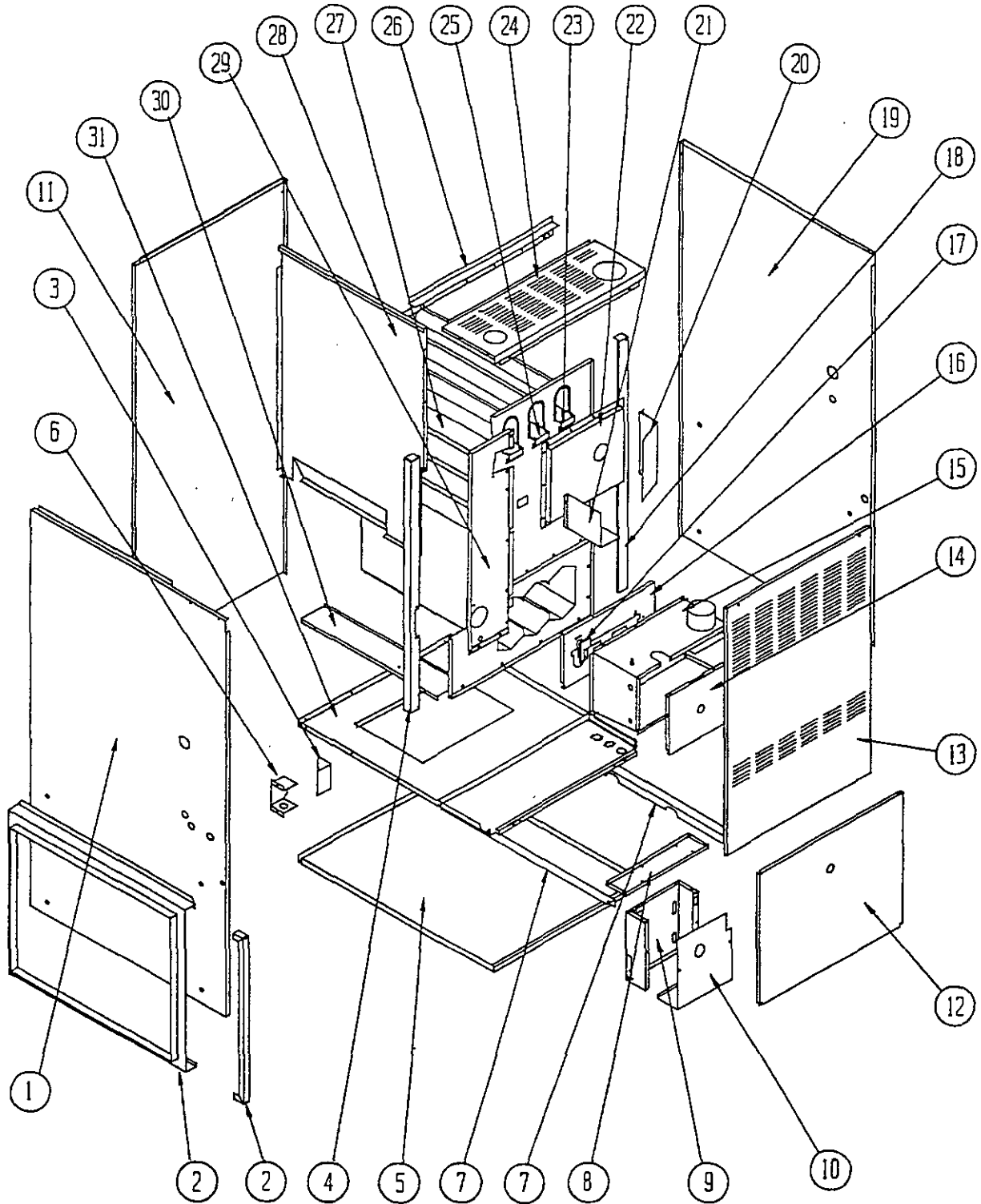
<u>Page Description</u>	<u>Page</u>	<u>Date</u>	<u>Supersedes</u>
Cabinet Components--Exploded View	1	7-29-92	
" " --Usage List	2	10-12-92	7-29-92
Functional Components--Exploded View	3	7-29-92	
" " --Usage List	4	10-12-92	7-29-92
" " --Usage List	5	7-29-92	

*** IMPORTANT ***

Contact the installing and/or local distributor for all parts requirements. Make sure you have the complete model and serial number available from the unit rating plate.

NATIONAL PLUMBING STORES
1108 CITY PARK
P. O. BOX 1050
COLUMBUS, OH 43216
PHONE: 614-443-7411
FAX: 614-444-7808

CABINET COMPONENTS



MODELS NCH080, NCH095 Shown

Date: 7-29-92
Supersedes:

2110-864
Page: 1

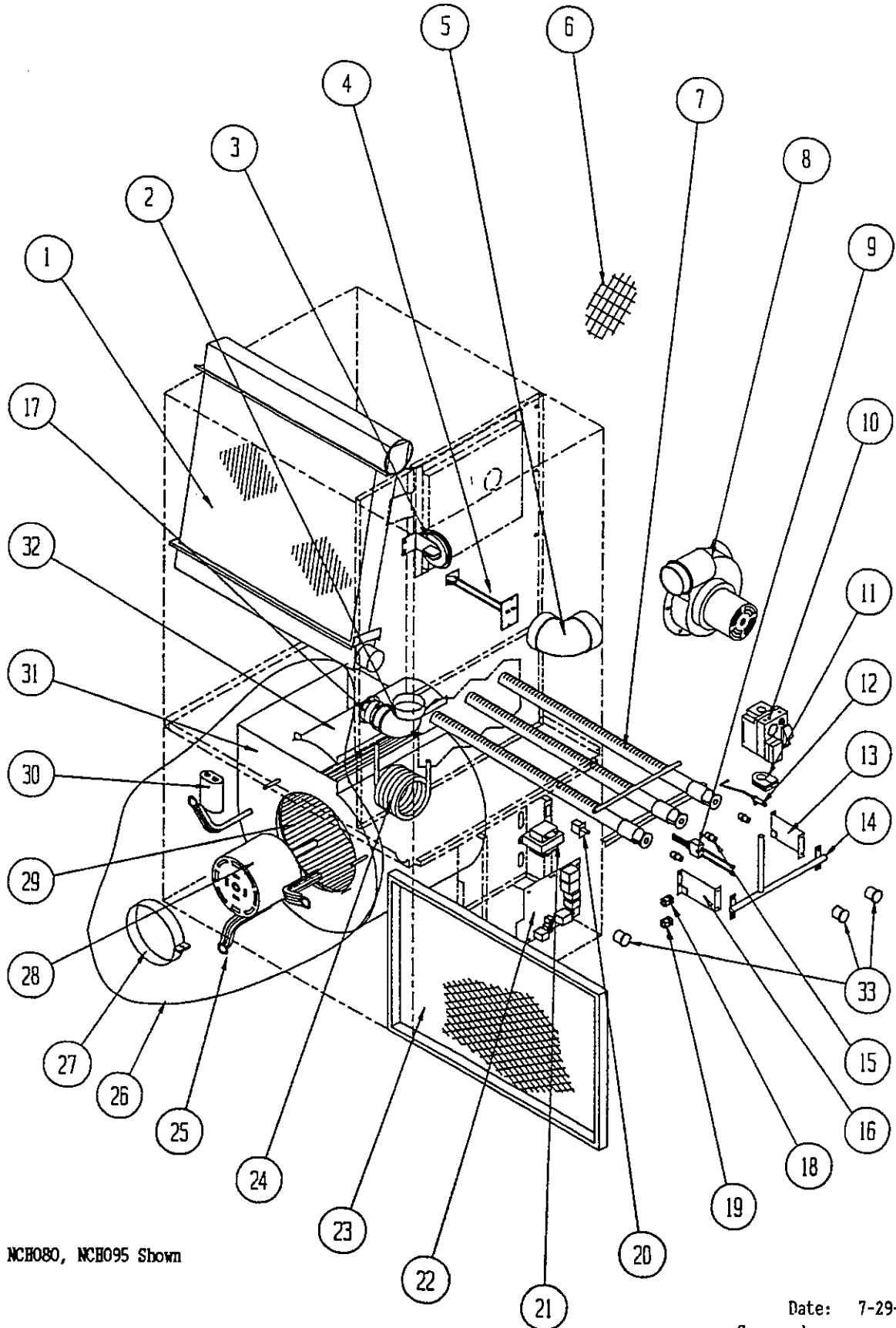
CABINET COMPONENTS

Dwg. No.	Part No.	Description	N	N	N	N	N	N
			C	C	C	C	C	C
			H	H	H	H	H	H
			0	0	0	0	0	0
			3	5	6	8	9	1
			6	0	5	0	5	5
			D	D	D	D	D	D
			3	3	3	4	6	6
			0	0	6	8	0	0
			A	A	A	A	A	A
1	500-231	Left Side Assembly		X	X	X	X	
2	FR21	Filter Rack (1)		X	X	X	X	
3	132-107	Junction Box Door		X	X	X	X	
4	104-855	Left Side Angle		X	X	X	X	
5	126-200	Lower Base		X	X			
5	126-205	Lower Base				X	X	
6	116-130	Junction Box		X	X	X	X	
7	104-857	Blower Angle		X	X		X	
7	104-863	Blower Angle				X		
8	116-125	Control Panel Bracket		X	X			
8	116-132	Control Panel Bracket				X		
8	116-133	Control Panel Bracket					X	
9	116-126	Control Panel		X	X	X	X	
10	132-105	Control Panel Cover		X	X	X	X	
11	508-090	Back		X	X			
11	508-093	Back				X	X	
12	152-210	Blower Door		X	X			
12	152-214	Blower Door				X	X	
13	152-209	Vestibule Door		X	X			
13	152-216	Vestibule Door				X	X	
14	168-052	Burner Box Cover		X	X			
14	168-058	Burner Box Cover				X	X	
15	913-0066	Burner Box		X	X			
15	913-0067	Burner Box				X	X	
16	168-050	Secondary Air Restrictor		X	X			
16	168-055	Secondary Air Restrictor				X	X	
17	112-147	Ignitor Bracket		X	X	X	X	
18	104-856	Right Side Angle		X	X	X	X	
19	500-230	Right Side Assembly		X	X	X	X	
20	134-121	Intake Air Shield		X	X			
21	134-120	Vent Air Shield		X	X	X	X	
22	168-054	Collector Box		X	X			
22	168-059	Collector Box				X	X	
23	168-002	Flue Baffle		2	2	3	3	
24	106-131	Top Fill		X	X			
24	106-135	Top Fill				X	X	
25	168-013	Flue Baffle						
26	140-134	Plenum Support		X	X			
26	140-135	Plenum Support				X	X	
27	171-193	Heat Exchanger		X	X			
27	171-194	Heat Exchanger				X	X	
28	134-099	Internal Coil Partition		X	X	X	X	
29	520-183	Coil Partition Assembly		X	X	X	X	
30	140-133	Coil Support		X	X	X	X	
31	127-201	Blower Base Assembly		X	X			
31	127-207	Blower Base Assembly				X	X	

Date: 10-12-92
Supersedes: 7-29-92

(1) Includes 16 x 25 permanent filter.

FUNCTIONAL COMPONENTS



MODELS NCH080, NCH095 Shown

Date: 7-29-92
Supersedes:

2110-864
Page: 3

FUNCTIONAL COMPONENTS

Dwg. No.	Part No.	Description	N C H O 3 6 D 3 O A	N C H O 5 D 3 O A	N C H O 6 5 D 3 6 A	N C H O 8 0 D 4 8 A	N C H O 9 5 D 6 0 A	N C H 1 1 5 D 6 0 A
1	5055-002	Coil Assembly		X		X		
1	5055-003	Coil Assembly			X		X	
2	6095-005	2" Street Elbow		X	X	X	X	
3	8406-068	Pressure Switch		X		X		
3	8406-069	Pressure Switch			X			
3	8406-070	Pressure Switch					X	
4	8402-067	Limit Control			X			
4	8402-068	Limit Control		X				
4	8402-064	Limit Control				X	X	
5	6095-006	High Temperature Elbow		X	X	X	X	
6	7002-016	2.375" Bird Screen		2	2			
6	7002-017	2.875" Bird Screen		2	2			
6	7002-018	3.500" Bird Screen		2	2	2	2	
7	9010-061	Burner		X	X			
7	9010-062	Burner				X	X	
8	8620-068	Induced Draft Blower Assembly		X				
8	8620-069	Induced Draft Blower Assembly			X			
8	8620-070	Induced Draft Blower Assembly				X		
8	8620-071	Induced Draft Blower Assembly					X	
9	8553-003	Ignitor		X	X	X	X	
10	5651-083	Gas Valve		X	X			
10	5651-089	Gas Valve				X	X	
11	5451-017	Manifold Grommet		X	X	X	X	
12	8554-016	Sensor		X	X	X	X	
13	112X123	Right Manifold Bracket		X	X	X	X	
14	5818-028	Gas Manifold		X	X			
14	5818-029	Gas Manifold				X	X	
15	9010-054	Gas Orifice 3/32"		X				
15	9010-043	Gas Orifice #36			X			
15	9010-057	Gas Orifice 2.45MM				X		
15	9010-052	Gas Orifice 2.70 MM					X	
16	112Y123	Left Manifold Bracket		X	X	X	X	
17	6093-007	No-Hub Connector		X	X	X	X	
18	8611-073	Single Terminal Bushing		X	X	X	X	
19	8611-074	Double Terminal Bushing		X	X	X	X	
20	8406-047	Door Switch		X	X	X	X	
21	8407-039	Transformer		X	X	X	X	
22	5651-084	Furnace Control		X	X	X	X	
23	7003-004	16 x 25 Permanent Filter		X	X	X	X	
24	5452-005-6000	Vinyl Drain Hose		X	X	X	X	
25	8200-034	Motor Mount Arm		3	3	3		
25	8200-035	Motor Mount Arm					3	
26	900-174	Blower Assembly		X				
26	900-173	Blower Assembly			X			
26	900-175	Blower Assembly				X		
26	900-176	Blower Assembly					X	

Date: 10-12-92
Supersedes: 7-29-92

FUNCTIONAL COMPONENTS

Dwg. No.	Part No.	Description	N	N	N	N	N	N
			C	C	C	C	C	C
			H	H	H	H	H	H
			0	0	0	0	0	0
			3	5	6	8	9	1
			6	0	5	0	5	5
			D	D	D	D	D	D
			3	3	3	4	6	6
			0	0	6	8	0	0
			A	A	A	A	A	A
27	8200-033	Motor Mount Band		X	X	X	X	
28	8105-038	1/3 HP Motor 115V		X				
28	8105-037	1/3 HP Motor 115V			X			
28	8106-028	1/2 HP Motor 115V				X		
28	8107-005	3/4 HP Motor 115V					X	
29	5152-005	Blower Wheel		X				
29	5152-013	Blower Wheel			X			
29	5152-053	Blower Wheel				X		
29	5152-050	Blower Wheel					X	
30	8552-002	Capacitor 5 MFD 370V		X	X			
30	8552-004	Capacitor 7 MFD 370V				X		
30	8552-026	Capacitor 15 MFD 370V					X	
31	151-085	Blower Housing		X	X			
31	151-082	Blower Housing				X		
31	5152-050	Blower Housing (1)					X	
32	144-127	Diffuser		X	X			
32	144-129	Diffuser				X		
32	(1) N/A	Diffuser					X	

(1) Drawing No. 31 part No. 5152-050 includes housing, diffuser, and wheel part No. 5152-053.

Date: 7-29-92
Supersedes: