

REPLACEMENT PARTS MANUAL

MPG-C SUFFIX SERIES

GAS FURNACES

BTU/HR: 40,000 60,000 80,000  
100,000 120,000 140,000

Manual 2110-865

Revision A

Date 10-27-94

Supersedes 12-02-92

\*\*\*\*\*  
\* GENERAL NOTES \*  
\*\*\*\*\*

\*Revised and/or additional pages may be issued from time to time.  
\*A complete and current manual consists of pages dated as shown in the following index.

\*\*\*\*\*  
\*\* INDEX \*\*  
\*\*\*\*\*

	<u>Page</u>	<u>Description</u>	<u>Page</u>	<u>Date</u>	<u>Supersedes</u>
Functional Components--Exploded View			1	<b>10-31-94</b>	<b>12-02-92</b>
II --Usage List	II		2	<b>10-31-94</b>	<b>12-02-92</b>
" --Usage List	II		3	<b>10-31-94</b>	<b>12-02-92</b>

\*\*\*\*\*  
\*\*\* IMPORTANT \*\*\*  
\*\*\*\*\*

Contact the installing and/or local distributor for all parts requirements. Make sure you have the complete model and serial number available from the unit rating plate.

# PARTS

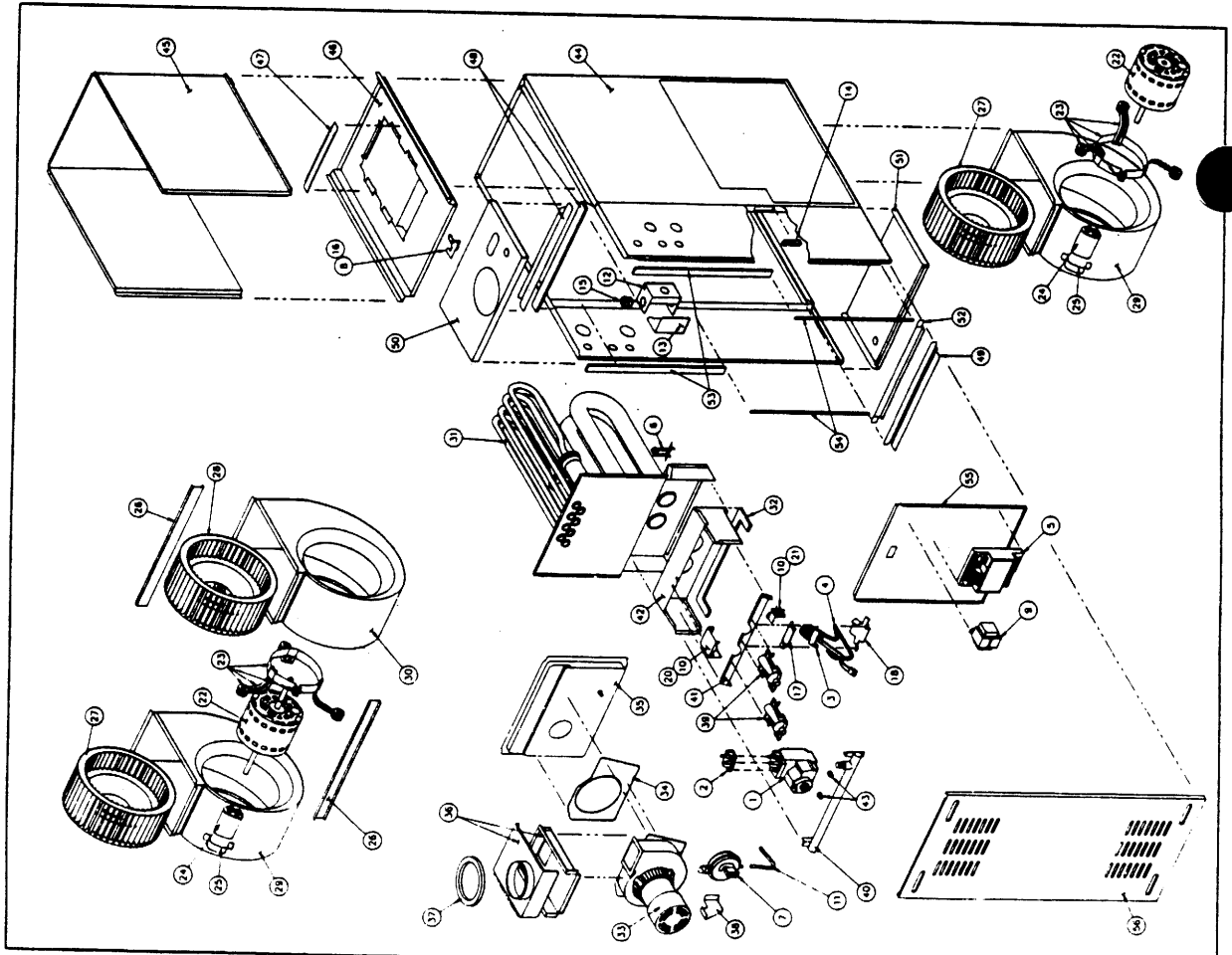
## FUNCTIONAL PARTS LIST

The format of this parts list allows you to get the part number quickly. It allows you to easily identify the part and the part number. Propane Conversion Kit and Filter Frames are also listed in the parts list.

If you do not know the part number, find the part illustration to the left and note the illustration number. Locate the illustration number in the Parts List on the back foldout of this packet. Read across the list to locate the part number for the appropriate size furnace.

**EXAMPLE:** You need an inducer motor for a 60,000 BTUH input 1/3 H.P. furnace:

1. Find the inducer motor in the illustration and get the illustration number (in this case 33).
2. Go to the table and read down to illustration number 33.
3. Read across the row to find the part number for the 60,000 BTUH input 1/3 H.P. furnace.
4. Read part number 9043-349.



Date: 10-31-90  
Supersedes: 12-02-90

2110-865  
Page: 1

+BTU/HR		40,000	60,000	60,000	60,000	80,000	80,000	80,000	100,000	100,000	100,000	120,000	140,000
+ MOTOR HORSEPOWER		1/4 HP	1/3 HP	1/2 HP	1/3 HP	1/2 HP	1/2 HP	3/4 HP	1/2 HP	3/4 HP	100D60	3/4 HP	3/4 HP
No.	Description	404024	040D36	060D24	060D36	060D48	080D36	080D48	080D48	080D48	100D60	120D60	140D60
<b>CONTROLS GROUP</b>													
1	Gas Control - HW Nat (SV9500M)	9043-426	9043-426	9043-426	9043-426	9043-426	9043-426	9043-426	9043-426	9043-426	9043-426	9043-426	9043-426
2	Inlet Gas Connector	9043-422	9043-422	9043-422	9043-422	9043-422	9043-422	9043-422	9043-422	9043-422	9043-422	9043-422	9043-422
3	Pilot/Ignitor HW Nat (C3450D)	9043-427	9043-427	9043-427	9043-427	9043-427	9043-427	9043-427	9043-427	9043-427	9043-427	9043-427	9043-427
4	Pilot Tubing	9043-302	9043-302	9043-302	9043-302	9043-302	9043-302	9043-302	9043-302	9043-302	9043-302	9043-302	9043-302
5	Control Module (ST9141A1002)	9043-428	9043-428	9043-428	9043-428	9043-428	9043-428	9043-428	9043-428	9043-428	9043-428	9043-428	9043-428
<b>ELECTRONIC GROUP CONTROLS</b>													
6	Primary Limit Switch	9043-304	9043-305	9043-304	9043-305	9043-304	9043-305	9043-304	9043-304	9043-304	9043-304	9043-304	9043-305
7	Pressure Switch	9043-311	9043-311	9043-311	9043-311	9043-311	9043-311	9043-311	9043-311	9043-311	9043-311	9043-311	9043-311
8	Power Disconnect												
9	Transformer 40VA	9043-429	9043-429	9043-429	9043-429	9043-429	9043-429	9043-429	9043-429	9043-429	9043-429	9043-429	9043-429
10	Burner Limit Switch	9043-317	9043-317	9043-317	9043-317	9043-317	9043-317	9043-317	9043-317	9043-317	9043-317	9043-317	9043-317
<b>HARDWARE</b>													
11	Pressure Switch Tubing	9043-318	9043-318	9043-318	9043-318	9043-318	9043-318	9043-318	9043-318	9043-318	9043-318	9043-318	9043-318
12	Junction Box												
13	Junction Box Cover												
14	Hem Bushing	9043-430	9043-430	9043-430	9043-430	9043-430	9043-430	9043-430	9043-430	9043-430	9043-430	9043-430	9043-430
15	Strain Relief												
16	Disconnect Bracket												
17	Pilot Mounting Bracket	9043-431	9043-431	9043-431	9043-431	9043-431	9043-431	9043-431	9043-431	9043-431	9043-431	9043-431	9043-431
18	Pilot Shield	9043-432	9043-432	9043-432	9043-432	9043-432	9043-432	9043-432	9043-432	9043-432	9043-432	9043-432	9043-432
19	Wire Harness Kit (Not Shown)	9043-433	9043-433	9043-433	9043-433	9043-433	9043-433	9043-433	9043-433	9043-433	9043-433	9043-433	9043-433
20	Upper Burner Limit Switch Bracket												
21	Lower Burner Limit Switch Bracket	9043-434	9043-434	9043-434	9043-434	9043-434	9043-434	9043-434	9043-434	9043-434	9043-434	9043-434	9043-434
<b>BLOWER GROUP</b>													
22	Blower Assembly (Complete)	9043-435	9053-436	9043-435	9043-436	9043-437	9043-436	9043-437	9043-437	9043-437	9043-437	9043-437	9043-437
23	Blower Motor	9043-440	9043-441	9043-440	9043-441	9043-442	9043-441	9043-442	9043-442	9043-442	9043-442	9043-442	9043-442
24	Motor Mounting Kit	9043-328	9043-328	9043-328	9043-328	9043-328	9043-328	9043-328	9043-328	9043-328	9043-328	9043-328	9043-328
25	Capacitor	8552-004	8552-004	8552-004	8552-004	8552-004	8552-004	8552-004	8552-004	8552-004	8552-004	8552-004	8552-004
26	Capacitor Strap												
27	Blower Housing Support	N/A	N/A	N/A	N/A	N/A	N/A	N/A	N/A	N/A	N/A	N/A	N/A
28	Blower Wheel Direct Drive (convex)	9043-330	9043-331	9043-330	9043-331	9043-332	9043-331	9043-332	9043-332	9043-332	9043-332	9043-332	9043-332
29	Blower Wheel Direct Drive (concave)	N/A	N/A	N/A	N/A	N/A	N/A	N/A	N/A	N/A	N/A	N/A	N/A
30	Blower Housing	9043-444	9043-445	9043-444	9043-445	9043-446	9043-445	9043-446	9043-446	9043-446	9043-446	9043-446	9043-446
<b>HEAT EXCHANGER GROUP</b>													
31	Heat Exchanger Assembly	9043-340	9043-340	9043-340	9043-341	9043-342	9043-341	9043-342	9043-342	9043-342	9043-342	9043-342	9043-342
32	Bottom Bulkhead Gasket												
33	Draft Inducer Motor Assembly	9043-349	9043-349	9043-349	9043-349	9043-349	9043-349	9043-349	9043-349	9043-349	9043-349	9043-349	9043-349
34	Draft Inducer Motor Gasket	9043-351	9043-351	9043-351	9043-351	9043-351	9043-351	9043-351	9043-351	9043-351	9043-351	9043-351	9043-351
35	Inducer Pan Assembly	9043-352	9043-352	9043-352	9043-353	9043-354	9043-353	9043-354	9043-354	9043-354	9043-354	9043-354	9043-354
36	Flue Box	9043-362	9043-362	9043-362	9043-363	9043-363	9043-363	9043-363	9043-363	9043-363	9043-363	9043-363	9043-363
37	Vent Gasket	9043-365	9043-365	9043-365	9043-365	9043-365	9043-365	9043-365	9043-365	9043-365	9043-365	9043-365	9043-365
38	Flue Box Support												

Date: 10-31-94  
Supersedes: 12-02-92

