

# REPLACEMENT PARTS MANUAL

## HIGH EFFICIENCY GAS FURNACE

MODELS: DCL065D36C, DCL080D48C,  
DCL095D60C, DCL110D60C

Manual 2110-867

Revision F

Date 12-15-95

Supersedes 05-02-95

\*\*\*\*\*  
\* GENERAL NOTES \*  
\*\*\*\*\*

\*Revised and/or additional pages may be issued from time to time.  
\*A complete and current manual consists of pages dated as shown in the following index.

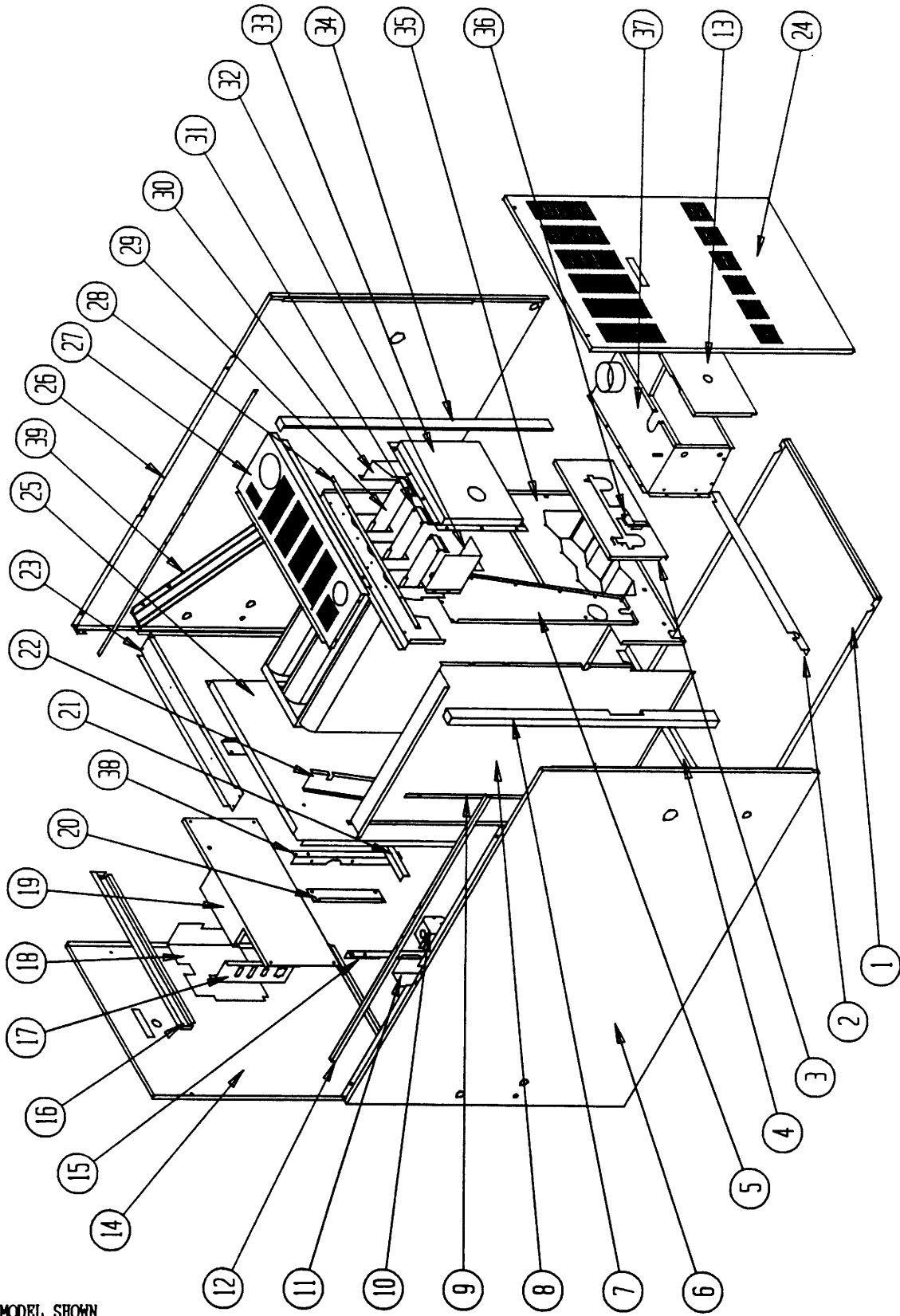
\*\*\*\*\*  
\*\* INDEX \*\*  
\*\*\*\*\*

<u>Page</u>	<u>Description</u>	<u>Page</u>	<u>Date</u>	<u>Supersedes</u>
Cabinet	Components--Exploded View	1	12-15-95	02-01-94
"	" --Usage List	2	12-15-95	12-15-94
"	" --Usage List	3	12-15-95	12-15-94
<b>Functional</b>	Components--Exploded View	4	12-15-95	07-18-94
"	" --Usage List	5	12-15-95	05-02-95
Control Panel	Wire Assemblies--Exploded View	6	02-01-94	
"	" --Usage List	7	12-15-95	02-24-95

\*\*\*\*\*  
\*\*\* XMPORTANT \*\*\*  
\*\*\*\*\*

Contact the installing and/or local Bard distributor for all parts requirements. Make sure you have the complete model and serial number available from the unit rating plate.

CABINET COMPONENTS



DCL080/095 MODEL SHOWN

Date: 12-15-95  
Supersedes: 02-01-94

2110-867  
Page: 1

CABINET COMPONENTS

Dwg. No.	Part No.	Description	D	D	D	D
			C	C	C	C
			L	L	L	L
			O	O	O	O
			6	8	9	1
			5	0	5	0
			D	D	D	D
			3	4	6	6
			6	8	0	0
			C	C	C	C
1	S126-232	Base Assembly	X			
1	S126-233	Base Assembly		X	X	
1	S126-234	Base Assembly				X
2	104-917	Front Base Angle	X			
2	104-918	Front Base Angle		X	X	
2	104-919	Front Base Angle				X
3	168-050	Secondary Air Restrictor	X			
3	168-055	Secondary Air Restrictor		X	X	
3	168-060	Secondary Air Restrictor				X
4	104-920	Rear Base Angle	X			
4	104-921	Rear Base Angle		X	X	
4	104-922	Rear Base Angle				X
5	520-227	Coil Partition Assembly	X	X	X	X
6	500-283	Left Side Assembly	X	X	X	X
7	S104-889	Left Side Angle	X	X	X	X
8	S120-270	Internal Coil Partition	X	X	X	X
9	134-142	Coil Air Deflector	X	X	X	X
10	116-130	Junction Box	X	X	X	X
11	132-107	Junction Box Cover	X	X	X	X
12	104-934	Side Top Support Angle	X	X	X	X
13	S168-052	Burner Box Cover	X			
13	S168-058	Burner Box Cover		X	X	
13	S168-063	Burner Box Cover				X
14	S552-233	Blower Door Assembly	X			
14	S552-234	Blower Door Assembly		X	X	
14	S552-235	Blower Door Assembly				X
15	104Y925	Left Blower Angle			X	X
15	104Y926	Left Blower Angle	X	X		
16	108-104	Upper Back	X			
16	108-105	Upper Back		X	X	
16	108-106	Upper Back				X
17	116-166	Control Panel Plug Support	X	X	X	X
18	132-123	Control Panel Cover	X	X	X	X
19	116-161	Control Panel	X			
19	116-160	Control Panel		X	X	
19	116-163	Control Panel				X
20	116-164	Control Panel Support	2	2	2	2
21	104-936	Filter Support Angle	X			
21	104-935	Filter Support Angle		X	X	
21	104-937	Filter Support Angle				X
22	S136-272	Internal Coil Fill	X	X	X	X

Date: 12-15-95  
Supersedes: 12-15-94

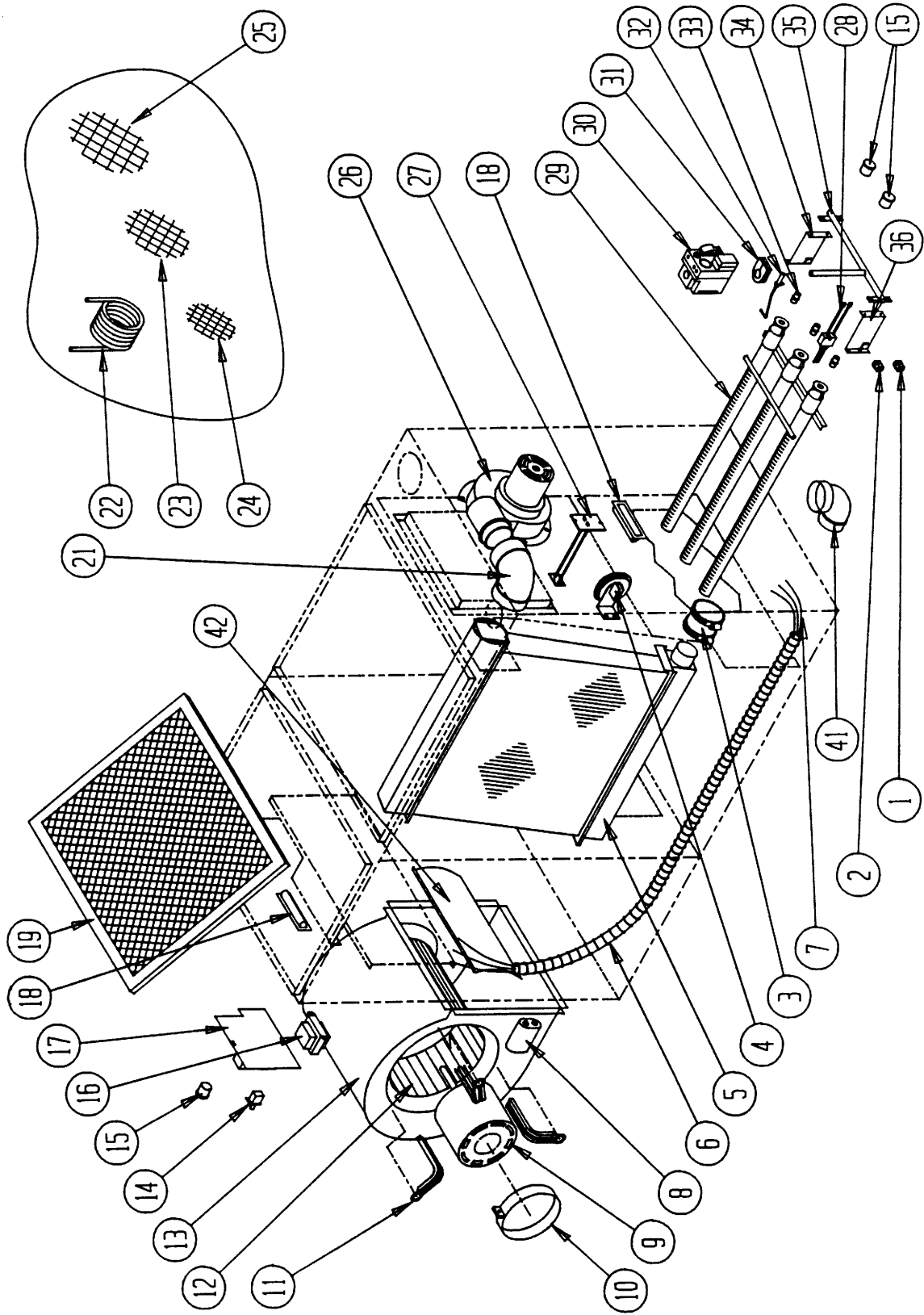
2110-867

CABINET COMPONENTS

Dwg. No.	Part No.	Description	D C L O 6 5 D 3 6 C	D C L O 8 0 D 4 8 C	D C L O 9 5 D 6 0 C	D C L 1 1 0 D 6 0 C
23	164-545	Top Channel	x			
23	164-546	Top Channel		x	x	
23	164-547	Top Channel				x
24	S152-209	Vestibule Door	x			
24	S152-216	Vestibule Door		x	x	
24	S152-217	Vestibule Door				x
25	520-261	Blower Partition Assembly	x			
25	520-262	Blower Partition Assembly		x	x	
25	520-263	Blower Partition Assembly				x
26	500-282	Right Side Assembly	x	x	x	x
27	S106-152	Top Fill Assenbly	x			
27	S106-151	Top Fill Assenbly		x	x	
27	S106-153	Top Fill Assenbly				x
28	104-895	Top Fill Angle	x			
28	104-896	Top Fill Angle		x	x	
28	104-897	Top Fill Angle				x
29	168-002	Internal Flue Baffle	2	3	3	2
30	134-121	Intake Air Shield	x			
31	168-013	Internal Flue Baffle				2
32	134-120	Vent Air Shield	x	x	x	x
33	S168-054	Collector Box Assembly	x			
33	S168-081	Collector Box Assembly		x	x	
33	S168-064	Collector Box Assembly				x
34	S104-903	Right Side Angle	x	x	x	x
35	171-216	Heat Exchanger Assenbly	x			
35	171-217	Heat Exchanger Assenbly		x	x	
35	171-218	Heat Exchanger Assenbly				x
36	112-147	Ignitor Bracket	x	x	x	x
37	913-0066	Burner Box Assembly	x			
37	913-0067	Burner Box Assembly		x	x	
37	913-0070	Burner Box Assembly				x
38	104X925	Right Blower Angle			x	x
38	104X926	Right Blower Angle	x	x		
39	130-108	Filter Support	2	2	2	
39	130-109	Filter Support				2

Date: 12-15-95  
Supersedes: 12-15-94

FUNCTIONAL COMPONENTS



DCLO80/095 MODEL SHOWN

Date: 12-15-95  
Supersedes: 07-18-94

2110-867  
Page: 4

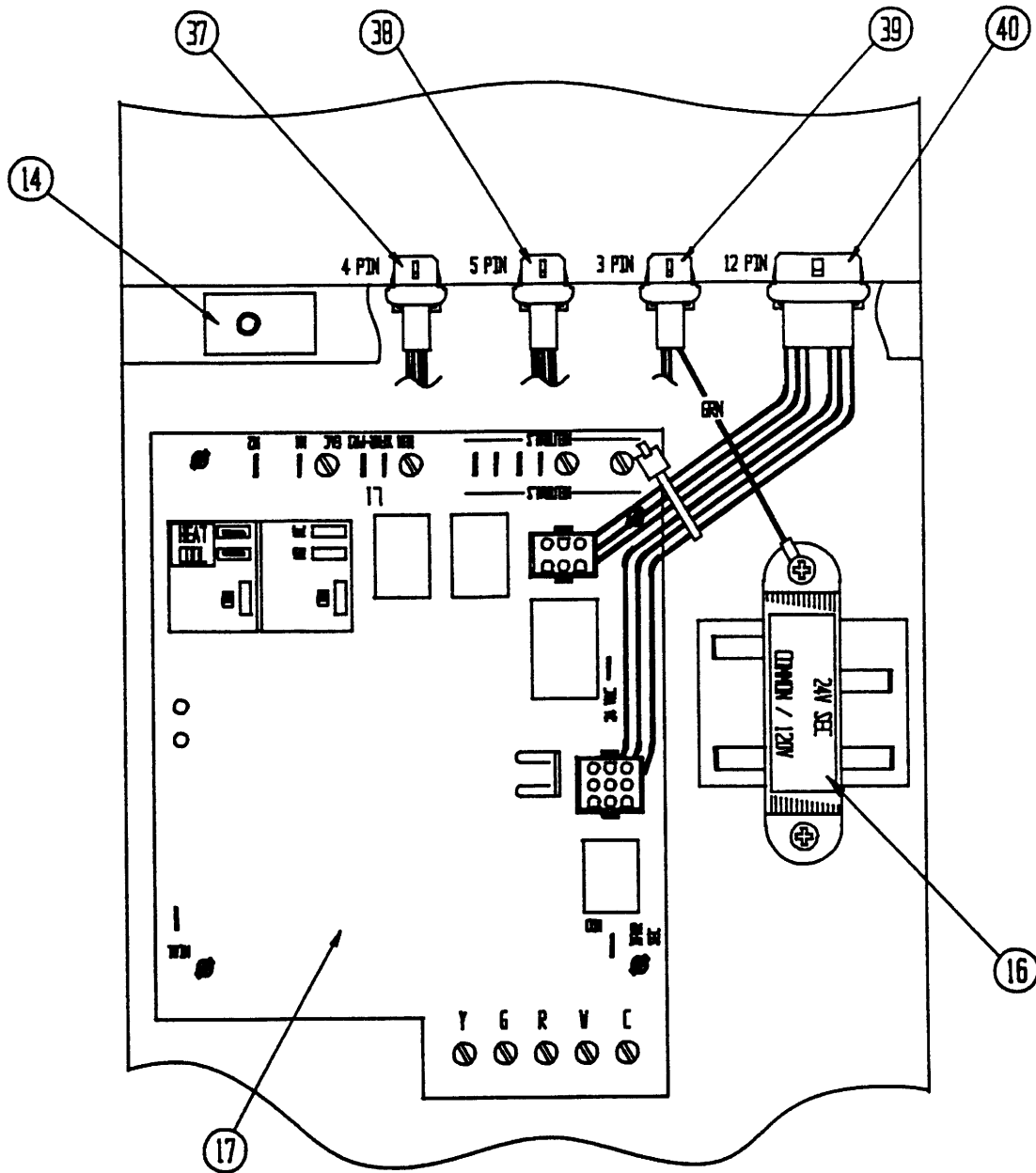
FUNCTIONAL COMPONENTS

Dwg. No.	Part No.	Description	D C L O 6 5 D 3 6 C	D C L O 8 0 D 4 8 C	D C L O 9 5 D 6 0 C	D C L O 1 1 0 D 6 0 C
1	8611-074	Double Terminal Bushing	X	X	X	X
2	8611-073	Single Terminal Bushing	X	X	X	X
3	6093-007	No-Hub Connector	X	X	X	X
4	8406-069	Pressure Switch	X			
4	8406-070	Pressure Switch		X	X	X
5	5055-004	Coil Assembly		X		
5	5055-003	Coil Assembly	X		X	X
6	S8611-089	Plastic Wire Channel	X	X	X	X
7	3000-1014	Wire Harness	X	X	X	X
8	8552-002	Capacitor 5 MFD 370V	X			
8	8552-004	Capacitor 7-1/2 MFD 370V		X		
8	8552-026	Capacitor 15 MFD 370V			X	
8	8552-034	Capacitor 15 MFD 440V				X
9	8105-041	1/3 HP Motor 115V	X			
9	8106-033	1/2 HP Motor 115V		X		
9	8107-007	3/4 HP Motor 115V			X	
9	8107-008	3/4 HP Motor 115V				X
10	8200-033	Motor Mount Band	X	X	X	X
11	8200-034	Motor Mount Arm	X	X		
11	8200-035	Motor Mount Arm			X	X
12	5152-013	Blower Wheel	X			
12	5152-059	Blower Wheel		X		
12	5152-053	Blower Wheel			X	
12	5152-072	Blower Wheel				X
12	5152-073	Blower Wheel				X
13	151-085	Blower Housing	X			
13	151-082	Blower Housing		X		
13	5152-050	Blower Housing (1)			X	
13	151-102	Left Blower Housing				X
13	151-103	Right Blower Housing				X
14	8406-047	Door Switch	X	X	X	X
15	8611-075	Sight Glass	X	X	X	X
16	8407-045	Transformer 40VA	X	X	X	X
17	5651-135	Furnace Control	X	X	X	X
18	1171-025	Door Pull	X	X	X	X
19	7003-040	16 x 20 Permanent Filter	X			
19	7003-041	20 x 20 Permanent Filter		X	X	
19	7003-042	20 x 25 Permanent Filter				X
21	6095-006	High Temperature Elbow	X	X	X	X
22	5452-005-6000	Vinyl Drain Hose	X	X	X	X

(1) Drawing No. 13 part No.5152-050 includes housing, diffuser, and wheel part No. 5152-053.

Date: 12-15-95  
Supersedes: 05-02-95

CONTROL PANEL WIRE ASSEMBLIES



Date: 02-01-94  
Supersedes:

FUNCTIONAL COMPONENTS AND CONTROL PANEL WIRE ASSEMBLIES

Dwg. No.	Part No.	Description	D C L O 6 5 D 3 6 C	D C L O 8 0 D 4 8 C	D C L O 9 5 D 6 0 C	D C L O 1 1 0 6 0 C
23	7002-023	Bird Screen 2.875 Diameter	2			
24	7002-022	Bird Screen 2.375 Diameter	2			
25	7002-024	Bird Screen 3.500 Diameter	2	2	2	
25	7002-025	Bird Screen 4.500 Diameter				2
26	8620-084	Induced Draft Blower	X	X	X	X
27	8402-089	Limit 230 degree F	X			
27	8402-078	Limit 175 degree F		X	X	X
28	8553-003	Ignitor	X	X	X	X
29	9010-070	Burner 2 cell	X			
29	9010-071	Burner 3 cell		X	X	
29	9010-072	Burner 4 cell				X
30	5651-083	Gas Valve	X			
30	5651-089	Gas Valve		X	X	
30	5651-106	Gas Valve				X
31	5451-017	Manifold Grommet	X	X	X	X
32	8554-016	Sensor	X	X	X	X
33	9010-043	Gas Orifice #36	2			
33	9010-057	Gas Orifice 2.45MM		3		
33	9010-052	Gas Orifice 2.70MM			3	
33	9010-010	Gas Orifice #38				4
34	S112X194	Right Manifold Bracket	X	X	X	X
35	5818-028	Gas Manifold	X			
35	5818-029	Gas Manifold		X	X	
35	5818-030	Gas Manifold				X
36	S112Y194	Left Manifold Bracket	X	X	X	X
37	3000-1019	4 Pin Wire Assembly	X	X	X	X
38	3000-1018	5 Pin Wire Assembly	X	X	X	X
39	3000-1016	3 Pin Wire Assembly	X	X	X	X
40	3000-1013	12 Pin Wire Assembly	X	X	X	X
41	6095-005	2" PVC Street Elbow	X	X	X	
41	6095-008	2" ABS Street Elbow				X
42	144-127	Diffuser	X			
42	144-129	Diffuser		X		
42	(1) N/A	Diffuser			X	
42	144-167	Diffuser				X

(1) Drawing No. 13 part No. 5152-050 includes diffuser.

Date: 02-24-95  
Supersedes: 07-18-94