

REPLACEMENT PARTS MANUAL

UPFLOW GAS FURNACE

MODELS: NCH036D30A, NCH050D30B, NCH065D36B,
NCH080D48B, NCH095D60B, NCH110D60A

Manual **2110-869** Revision A Date **03-29-95** Supersedes 05-03-94

* GENERAL NOTES *

*Revised and/or additional pages may be **issued** from time to time.
*A complete and current manual consists of pages dated as shown in the following index.

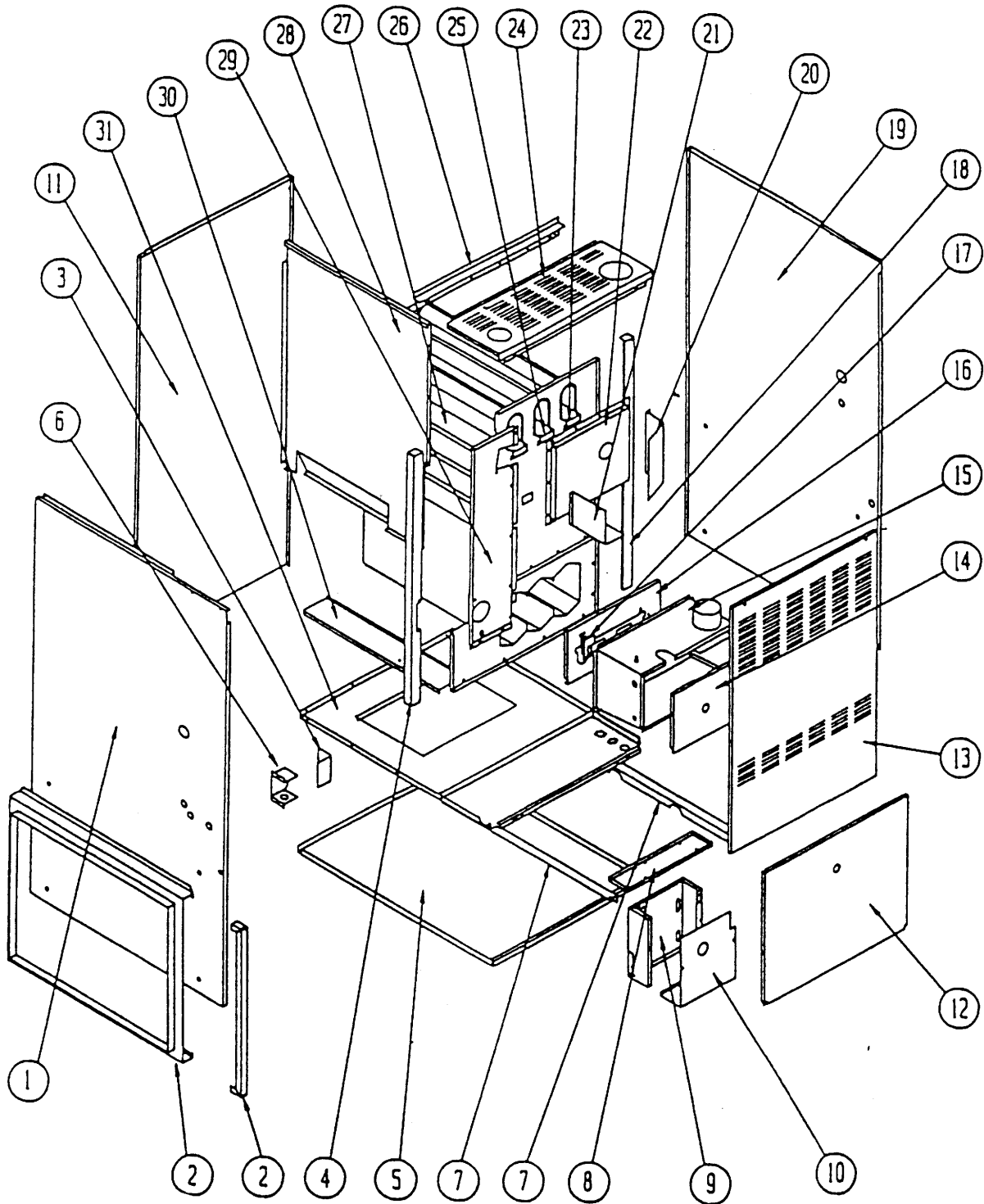
** INDEX **

| <u>Page</u> | <u>Description</u> | <u>Page</u> | <u>Date</u> | <u>Supersedes</u> |
|-------------------|---------------------------|-------------|-----------------|-------------------|
| Cabinet | Components--Exploded View | 1 | 05-03-94 | |
| " | " --Usage List | 2 | 03-29-95 | 05-03-94 |
| " | " --Usage List | 3 | 03-29-95 | 05-03-94 |
| Functional | Components--Exploded View | 4 | 05-03-94 | |
| " | " --Usage List | 5 | 03-29-95 | 05-03-94 |
| " | " --Usage List | 6 | 03-29-95 | 05-03-94 |
| Wire | Harness | 7 | 03-29-95 | |

*** IMPORTANT ***

Contact the installing and/or local Bard distributor for all parts requirements. Make sure you have the complete model and serial number available from the unit rating plate.

CABINET COMPONENTS



MODELS NCR080, NCR095 SHOWN

Date: 05-03-94
Supersedes:

2110-869
Page: 1

CABINET COMPONENTS

| Dwg. No. | Part No. | Description | N | N | N | N | N | N |
|----------|----------|--------------------------|---|---|---|---|---|---|
| | | | C | C | C | C | C | C |
| | | | H | H | H | H | H | H |
| | | | 0 | 0 | 0 | 0 | 0 | 0 |
| | | | 3 | 5 | 6 | 8 | 9 | 1 |
| | | | 6 | 0 | 5 | 0 | 5 | 0 |
| | | | D | D | D | D | D | D |
| | | | 3 | 3 | 3 | 4 | 6 | 6 |
| | | | 0 | 0 | 6 | 8 | 0 | 0 |
| | | | A | B | B | B | B | A |
| 1 | 500-231 | Left Side Assembly | X | X | X | X | X | X |
| 2 | FR21 | Filter Rack (1) | X | X | X | X | X | X |
| 3 | 132-107 | Junction Box Door | X | X | X | X | X | X |
| 4 | 104-889 | Left Side Angle | X | X | X | X | X | X |
| 5 | 126-200 | Lower Base | X | X | X | | | |
| 5 | 126-205 | Lower Base | | | | X | X | |
| 5 | 126-206 | Lower Base | | | | | | X |
| 6 | 116-130 | Junction Box | X | X | X | X | X | X |
| 7 | 104-857 | Blower Angle | X | X | X | | X | |
| 7 | 104-863 | Blower Angle | | | | X | | |
| 7 | 104-894 | Blower Angle | | | | | | X |
| 8 | 116-125 | Control Panel Bracket | X | X | X | | | |
| 8 | 116-132 | Control Panel Bracket | | | | X | | |
| 8 | 116-133 | Control Panel Bracket | | | | | X | |
| 8 | 116-152 | Control Panel Bracket | | | | | | X |
| 9 | 116-126 | Control Panel | X | X | X | X | X | X |
| 10 | 132-105 | Control Panel Cover | X | X | X | X | X | X |
| 11 | 508-090 | Back Assembly | X | X | X | | | |
| 11 | 508-093 | Back Assembly | | | | X | X | |
| 11 | 508-094 | Back Assembly | | | | | | X |
| 12 | S152-210 | Blower Door | X | X | X | | | |
| 12 | S152-214 | Blower Door | | | | X | X | |
| 12 | S152-215 | Blower Door | | | | | | X |
| 13 | S152-209 | Vestibule Door | X | X | X | | | |
| 13 | S152-216 | Vestibule Door | | | | X | X | |
| 13 | S152-217 | Vestibule Door | | | | | | X |
| 14 | S168-052 | Burner Box Cover | X | X | X | | | |
| 14 | S168-058 | Burner Box Cover | | | | X | X | |
| 14 | S168-063 | Burner Box Cover | | | | | | X |
| 15 | 913-0066 | Burner Box | X | X | X | | | |
| 15 | 913-0067 | Burner Box | | | | X | X | |
| 15 | 913-0070 | Burner Box | | | | | | X |
| 16 | 168-050 | Secondary Air Restrictor | | X | X | | | |
| 16 | 168-055 | Secondary Air Restrictor | | | | X | X | |
| 16 | 168-060 | Secondary Air Restrictor | | | | | | X |
| 16 | 168-068 | Secondary Air Restrictor | X | | | | | |
| 17 | 112-147 | Ignitor Bracket | X | X | X | X | X | X |
| 18 | 104-903 | Right Side Angle | X | X | X | X | X | X |
| 19 | 500-230 | Right Side Assembly | X | X | X | X | X | X |
| 20 | 134-121 | Intake Air Shield | X | X | X | | | |
| 21 | 134-120 | Vent Air Shield | X | X | X | X | X | X |

(1) Includes 16 x 25 permanent filter.

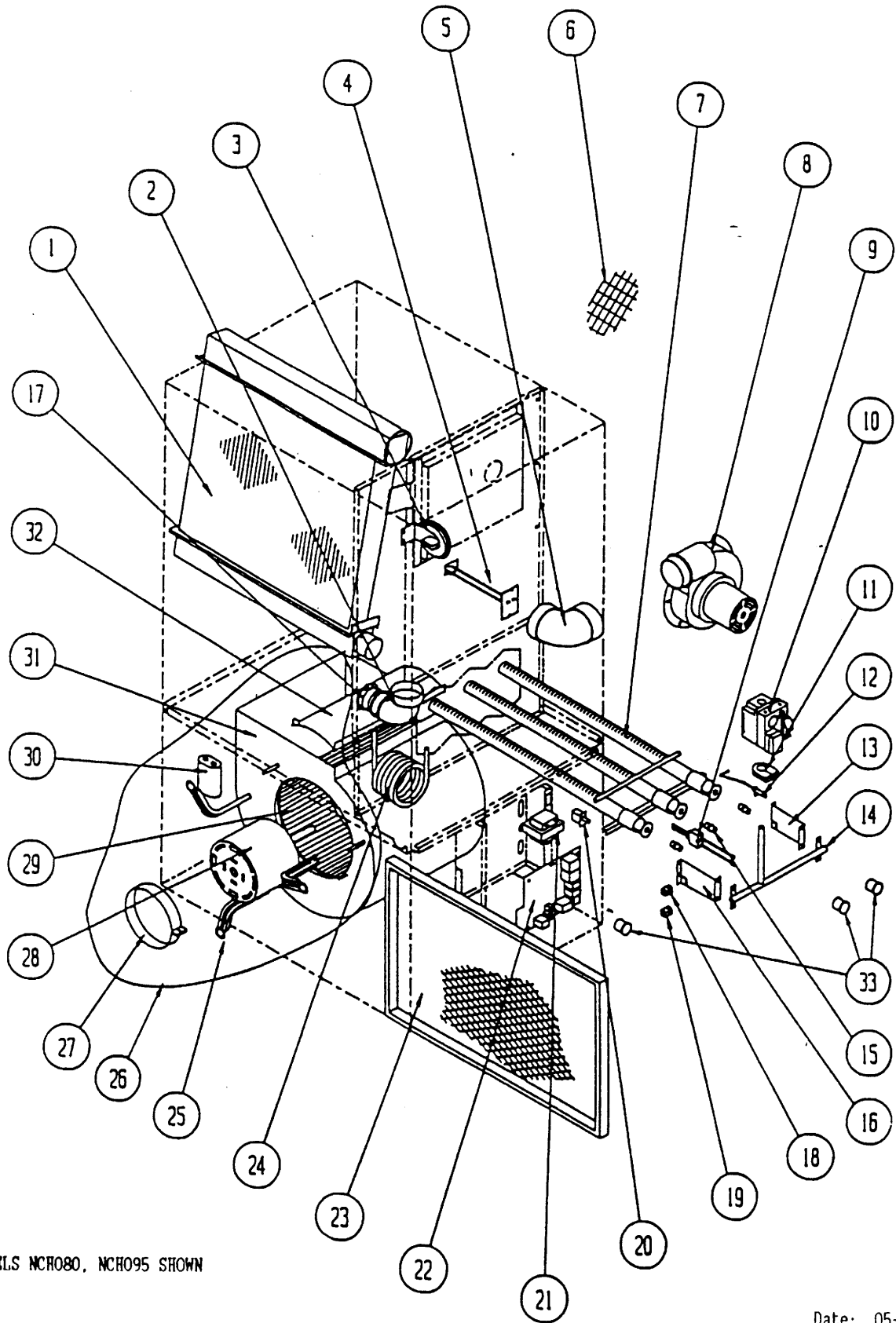
Date: 03-29-95
Supersedes: 05-03-94

CABINET COMPONENTS

| Dwg. No. | Part No. | Description | N | N | N | N | N | N |
|----------|----------|-------------------------|---|---|---|---|---|---|
| | | | C | C | C | C | C | C |
| | | | H | H | H | H | H | H |
| | | | 0 | 0 | 0 | 0 | 0 | 0 |
| | | | 3 | 5 | 6 | 8 | 9 | 1 |
| | | | 6 | 0 | 5 | 0 | 5 | 0 |
| | | | D | D | D | D | D | D |
| | | | 3 | 3 | 3 | 4 | 6 | 6 |
| | | | 0 | 0 | 6 | 8 | 0 | 0 |
| | | | B | B | B | B | B | B |
| 22 | S168-054 | Collector Box | | x | x | | | |
| 22 | S168-081 | Collector Box | | | | x | x | |
| 22 | S168-064 | Collector Box | | | | | | x |
| 22 | S168-066 | Collector Box | x | | | | | |
| 23 | 168-002 | Flue Baffle | | 2 | 2 | 3 | 3 | 2 |
| 24 | 106-131 | Top Fill | | x | x | | | |
| 24 | 106-135 | Top Fill | | | | x | x | |
| 24 | 106-136 | Top Fill | | | | | | x |
| 25 | 168-013 | Flue Baffle | 1 | | | | | 2 |
| 27 | 171-216 | Heat Exchanger Assembly | | x | x | | | |
| 27 | 171-217 | Heat Exchanger Assembly | | | | x | x | |
| 27 | 171-195 | Heat Exchanger Assembly | | | | | | x |
| 27 | 171-200 | Heat Exchanger Assembly | x | | | | | |
| 28 | S134-136 | Internal Coil Partition | x | x | x | x | x | x |
| 29 | 520-227 | Coil Partition Assembly | x | x | x | x | x | x |
| 30 | 140-133 | Coil Support | x | x | x | x | x | x |
| 31 | 127-235 | Blower Base Assembly | x | x | x | | | |
| 31 | 127-236 | Blower Base Assembly | | | | x | x | |
| 31 | 127-237 | Blower Base Assembly | | | | | | x |

Date: 03-29-9
 Supersedes: 05-03-94

FUNCTIONAL COMPONENTS



MODELS NCR080, NCR095 SHOWN

Date: 05-03-94
Supersedes:

2110-869
Page: 4

FUNCTIONAL COMPONENTS

| Dwg. No. | Part No. | Description | N | N | N | N | N | N |
|----------|----------|-------------------------------|---|---|---|---|---|---|
| | | | C | C | C | C | C | C |
| | | | H | H | H | H | H | H |
| | | | O | O | O | O | O | O |
| | | | 3 | 5 | 6 | 8 | 9 | 1 |
| | | | 6 | 0 | 5 | 0 | 5 | 0 |
| | | | D | D | D | D | D | D |
| | | | 3 | 3 | 3 | 4 | 6 | 6 |
| | | | 0 | 0 | 6 | 8 | 0 | 0 |
| | | | B | B | B | B | B | B |
| 1 | 5055-002 | Coil Assembly | | x | | | | |
| 1 | 5055-003 | Coil Assembly | x | | x | | x | x |
| 1 | 5055-004 | Coil Assembly | | | | x | | |
| 2 | 6095-005 | 2" Street Elbow--PVC | x | x | x | x | x | |
| 2 | 6095-008 | 2" Street Elbow--ABS | | | | | | x |
| 3 | 8406-068 | Pressure Switch | | x | | | | |
| 3 | 8406-069 | Pressure Switch | | | x | | | |
| 3 | 8406-070 | Pressure Switch | x | | | x | x | x |
| 4 | 8402-064 | Limit Control | | | | x | x | |
| 4 | 8402-067 | Limit Control | | | x | | | x |
| 4 | 8402-068 | Limit Control | | x | | | | |
| 4 | 8402-079 | Limit Control | x | | | | | |
| 5 | 6095-006 | High Temperature Elbow | x | x | x | x | x | x |
| 6 | 7002-022 | 2.375" Bird Screen | 2 | 2 | 2 | | | |
| 6 | 7002-023 | 2.875" Bird Screen | 2 | 2 | 2 | | | |
| 6 | 7002-024 | 3.500" Bird Screen | 2 | 2 | 2 | 2 | 2 | 2 |
| 7 | 9010-069 | Burner | x | | | | | |
| 7 | 9010-070 | Burner | | x | x | | | |
| 7 | 9010-071 | Burner | | | | x | x | |
| 7 | 9010-072 | Burner | | | | | | x |
| 8 | 8620-084 | Induced Draft Blower Assembly | x | x | x | x | x | x |
| 9 | 8553-003 | Ignitor | x | x | x | x | x | x |
| 10 | 5651-083 | Gas Valve | x | x | x | | | |
| 10 | 5651-089 | Gas Valve | | | | x | x | |
| 10 | 5651-106 | Gas Valve | | | | | | x |
| 11 | 5451-017 | Manifold Grommet | x | x | x | x | x | x |
| 12 | 8554-016 | Sensor | | x | x | x | x | x |
| 12 | 8554-018 | Sensor | x | | | | | |
| 13 | 112X148 | Right Manifold Bracket | x | x | x | x | x | x |
| 14 | 5818-028 | Gas Manifold | | x | x | | | |
| 14 | 5818-029 | Gas Manifold | | | | x | x | |
| 14 | 5818-030 | Gas Manifold | | | | | | x |
| 14 | 5818-031 | Gas Manifold | x | | | | | |
| 15 | 9010-010 | Gas Orifice #38 | | | | | | x |
| 15 | 9010-043 | Gas Orifice #36 | | | x | | | |
| 15 | 9010-052 | Gas Orifice 2.70 MM | | | | | x | |
| 15 | 9010-053 | Gas Orifice #33 | x | | | | | |
| 15 | 9010-054 | Gas Orifice 3/32" | | x | | | | |
| 15 | 9010-057 | Gas Orifice 2.45MM | | | | x | | |
| 16 | 112Y148 | Left Manifold Bracket | x | x | x | x | x | x |
| 17 | 6093-007 | No-Hub Connector | x | x | x | x | x | x |
| 18 | 8611-073 | Single Terminal Bushing | x | x | x | x | x | x |
| 19 | 8611-074 | Double Terminal Bushing | x | x | x | x | x | x |

Date: 03-29-95
Supersedes: 05-03-94

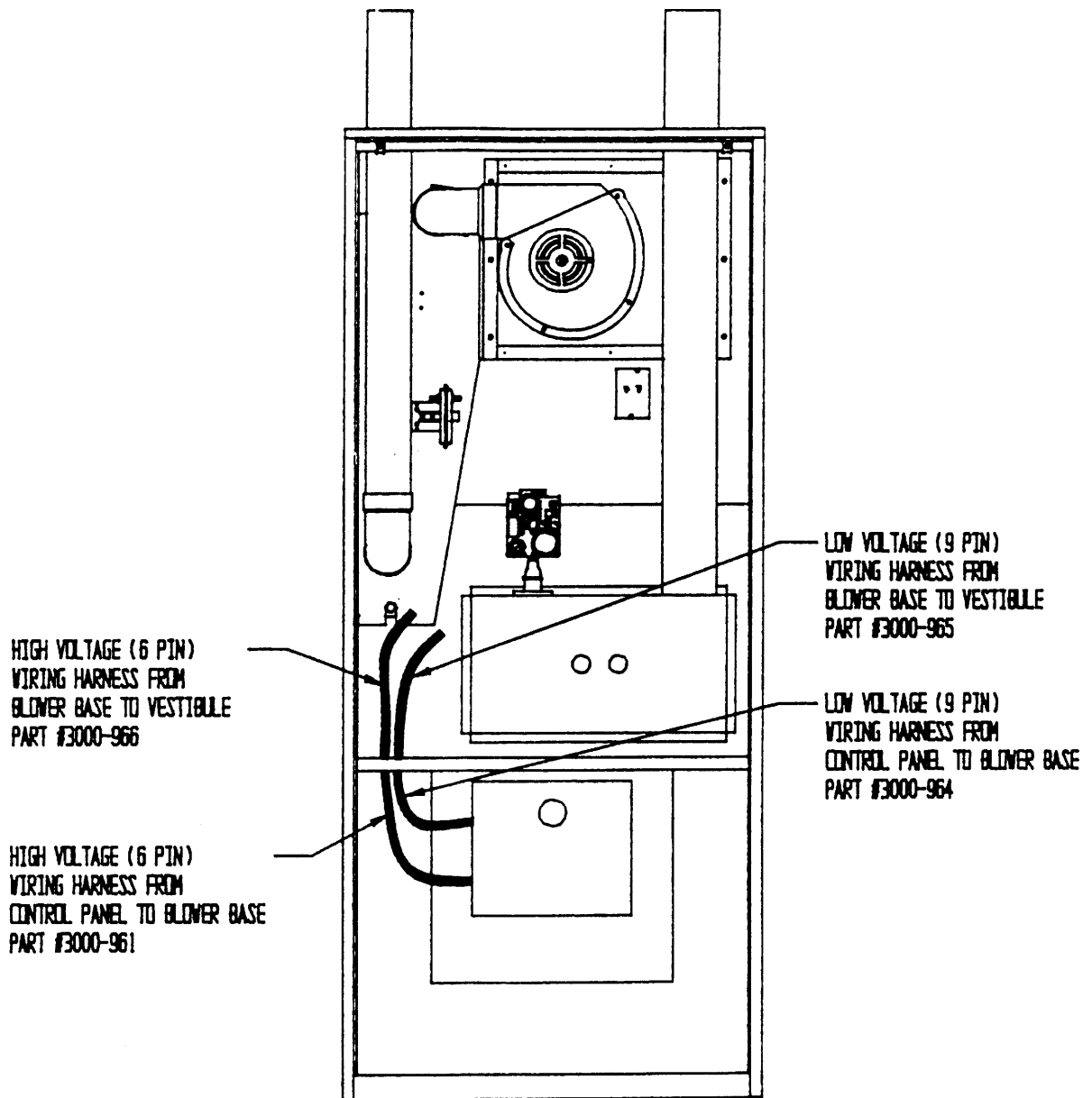
FUNCTIONAL COMPONENTS

| Dwg. No. | Part No. | Description | N | N | N | N | N | N |
|----------|---------------|--------------------------|---|---|---|---|---|---|
| | | | C | C | C | C | C | C |
| | | | H | H | H | H | H | H |
| | | | 0 | 0 | 0 | 0 | 0 | 0 |
| | | | 3 | 5 | 6 | 8 | 9 | 1 |
| | | | 6 | 0 | 5 | 0 | 5 | 0 |
| | | | D | D | D | D | D | D |
| | | | 3 | 3 | 3 | 4 | 6 | 6 |
| | | | 0 | 0 | 6 | 8 | 0 | 0 |
| | | | B | B | B | B | B | B |
| 20 | 8406-047 | Door Switch | x | x | x | x | x | x |
| 21 | 8407-039 | Transformer | x | x | x | x | x | x |
| 22 | 5651-084 | Furnace Control | x | x | x | x | x | x |
| 23 | 7003-004 | 16 x 25 Permanent Filter | x | x | x | x | x | x |
| 24 | 5452-005-6000 | Vinyl Drain Hose | x | x | x | x | x | x |
| 25 | 8200-034 | Motor Mount Arm | 3 | 3 | 3 | 3 | | |
| 25 | 8200-035 | Motor Mount Arm | | | | | 3 | 3 |
| 26 | 900-173 | Blower Assembly | | | x | | | |
| 26 | 900-174 | Blower Assembly | x | x | | | | |
| 26 | 900-175 | Blower Assembly | | | | x | | |
| 26 | 900-176 | Blower Assembly | | | | | x | |
| 26 | 900-177 | Blower Assembly | | | | | | x |
| 27 | 8200-033 | Motor Mount Band | x | x | x | x | x | x |
| 28 | 8105-041 | 1/3 HP Motor 115V | | | x | | | |
| 28 | 8105-038 | 1/3 HP Motor 115V | x | x | | | | |
| 28 | 8106-033 | 1/2 HP Motor 115V | | | | x | | |
| 28 | 8107-007 | 3/4 HP Motor 115V | | | | | x | |
| 28 | 8107-008 | 3/4 HP Motor 115V | | | | | | x |
| 29 | 5152-005 | Blower Wheel | x | x | | | | |
| 29 | 5152-013 | Blower Wheel | | | x | | | |
| 29 | 5152-053 | Blower Wheel | | | | | x | |
| 29 | 5152-059 | Blower Wheel | | | | x | | |
| 29 | 5152-072 | Blower Wheel | | | | | | x |
| 29 | 5152-073 | Blower Wheel | | | | | | x |
| 30 | 8552-002 | Capacitor 5 MFD 370V | x | x | x | | | |
| 30 | 8552-004 | Capacitor 7 MFD 370V | | | | x | | |
| 30 | 8552-026 | Capacitor 15 MFD 370V | | | | | x | x |
| 31 | 151-082 | Blower Housing | | | | x | | |
| 31 | 151-085 | Blower Housing | x | x | x | | | |
| 31 | 151-102 | Blower Housing | | | | | | x |
| 31 | 151-103 | Blower Housing | | | | | | x |
| 31 | 5152-050 | Blower Housing (1) | | | | | x | |
| 32 | 144-127 | Diffuser | x | x | x | | | |
| 32 | 144-129 | Diffuser | | | | x | | |
| 32 | 144-167 | Diffuser | | | | | | 2 |
| 32 | (1) N/A | Diffuser | | | | | x | |
| 33 | 8611-075 | Sight Glass | 3 | 3 | 3 | 3 | 3 | 3 |
| 33 | 112-158 | Blower Assembly Bracket | | | | | | 2 |

(1) Drawing No. 31 part No. 5152-050 includes housing, diffuser, and wheel part No. 5152-053.

Date: 03-29-95
Supersedes: 05-03-94

WIRE HARNESS



MODELS NCB080, NCR095 SHOWN

Date: 03-29-95
Supersedes:

2110-869
Page: 7