

---

# UPFLOW GAS FURNACE

## Replacement Parts Manual

### Models:

**DCH036D30D**

**DCH050D30D**

**DCH065D36D**

**DCH080D48D**

**DCH095D60D**

**DCH110D60D**

---

### General Notes

- Revised and/or additional pages may be issued from time to time.
- A complete and current manual consists of pages shown in the following contents section.

### Contents

| Description           | Page |
|-----------------------|------|
| Cabinet Components    |      |
| • Exploded View ..... | 1    |
| • Usage List .....    | 2    |
| • Usage List .....    | 3    |
| ◆ Blank Page .....    | 4    |
| Functional Components |      |
| • Exploded View ..... | 5    |
| ◆ Usage List .....    | 6    |
| • Usage List .....    | 7    |
| Wire Harness          |      |
| • Drawing .....       | 8    |



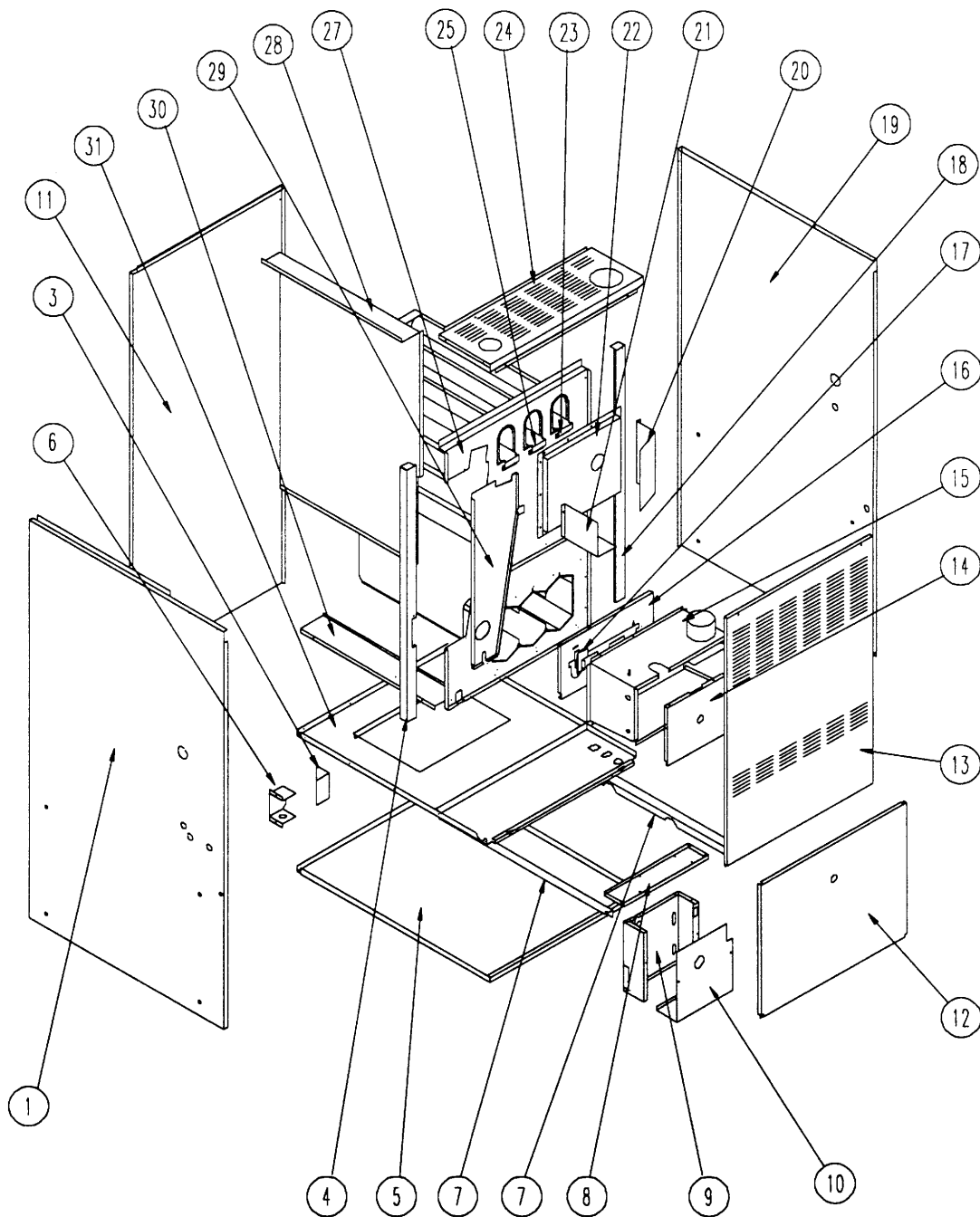
**BARD MANUFACTURING COMPANY**  
Bryan, Ohio 43506

*Since 1914...Moving ahead, just as planned.*

Manual: 2 11 0-876  
Supersedes:  
Date: 06-19-98

---

# CABINET COMPONENTS



MODELS DCH080, DCH095 Shown

SEXP-169

**This Exploded View references the Tables on Page 2 & 3**

# CABINET COMPONENTS

| Drawing<br>No. | Part No. | Description              | DCHO36D30D | DCHO50D30D | DCHO65D36D | DCHO80D48D | DCHO95D60D | DCH110D60D |
|----------------|----------|--------------------------|------------|------------|------------|------------|------------|------------|
| 1              | 500-231  | Left Side Assembly       | X          | X          | X          | X          | X          | X          |
| 3              | 132-107  | Junction Box Door        | X          | X          | X          | X          | X          | X          |
| 4              | 104-889  | Left Side Angle          | X          | X          | X          | X          | X          | X          |
| 5              | 126-200  | Lower Base               | X          | X          | X          |            |            |            |
| 5              | 126-205  | Lower Base               |            |            |            | X          | X          |            |
| 5              | 126-206  | Lower Base               |            |            |            |            |            | X          |
| 6              | 116-130  | Junction Box             | X          | X          | X          | X          | X          | X          |
| 7              | 104-857  | Blower Angle             | X          | X          | X          |            | X          |            |
| 7              | 104-863  | Blower Angle             |            |            |            | X          |            |            |
| 7              | 104-894  | Blower Angle             |            |            |            |            |            | X          |
| 8              | 116-213  | Control Panel Bracket    | X          | X          | X          |            |            |            |
| 8              | 116-215  | Control Panel Bracket    |            |            |            | X          |            |            |
| 8              | 116-216  | Control Panel Bracket    |            |            |            |            | X          |            |
| 8              | 116-214  | Control Panel Bracket    |            |            |            |            |            | X          |
| 9              | 116-212  | Control Panel            | X          | X          | X          | X          | X          | X          |
| 10             | 132-156  | Control Panel Cover      | X          | X          | X          | X          | X          | X          |
| 11             | 508-090  | Back Assembly            | X          | X          | X          |            |            |            |
| 11             | 508-093  | Back Assembly            |            |            |            | X          | X          |            |
| 11             | 508-094  | Back Assembly            |            |            |            |            |            | X          |
| 12             | S152-210 | Blower Door              | X          | X          | X          |            |            |            |
| 12             | S152-214 | Blower Door              |            |            |            | X          | X          |            |
| 12             | S152-215 | Blower Door              |            |            |            |            |            | X          |
| 13             | S152-209 | Vestibule Door           | X          | X          | X          |            |            |            |
| 13             | S152-216 | Vestibule Door           |            |            |            | X          | X          |            |
| 13             | S152-217 | Vestibule Door           |            |            |            |            |            | X          |
| 14             | S168-052 | Burner Box Cover         | X          | X          | X          |            |            |            |
| 14             | S168-058 | Burner Box Cover         |            |            |            | X          | X          |            |
| 14             | S168-063 | Burner Box Cover         |            |            |            |            |            | X          |
| 15             | 913-0066 | Burner Box               | X          | X          | X          |            |            |            |
| 15             | 913-0067 | Burner Box               |            |            |            | X          | X          |            |
| 15             | 913-0070 | Burner Box               |            |            |            |            |            | X          |
| 16             | 168-050  | Secondary Air Restrictor |            | X          | X          |            |            |            |
| 16             | 168-055  | Secondary Air Restrictor |            |            |            | X          | X          |            |
| 16             | 168-060  | Secondary Air Restrictor |            |            |            |            |            | X          |
| 16             | 168-068  | Secondary Air Restrictor | X          |            |            |            |            |            |
| 17             | 112-147  | Ignitor Bracket          | X          | X          | X          | X          | X          | X          |
| 18             | 104-903  | Right Side Angle         | X          | X          | X          | X          | X          | X          |
| 19             | 500-230  | Right Side Assembly      | X          | X          | X          | X          | X          | X          |
| 20             | 134-121  | Intake Air Shield        | X          | X          | X          |            |            |            |
| 21             | 134-120  | Vent Air Shield          | X          | X          | X          | X          | X          | X          |

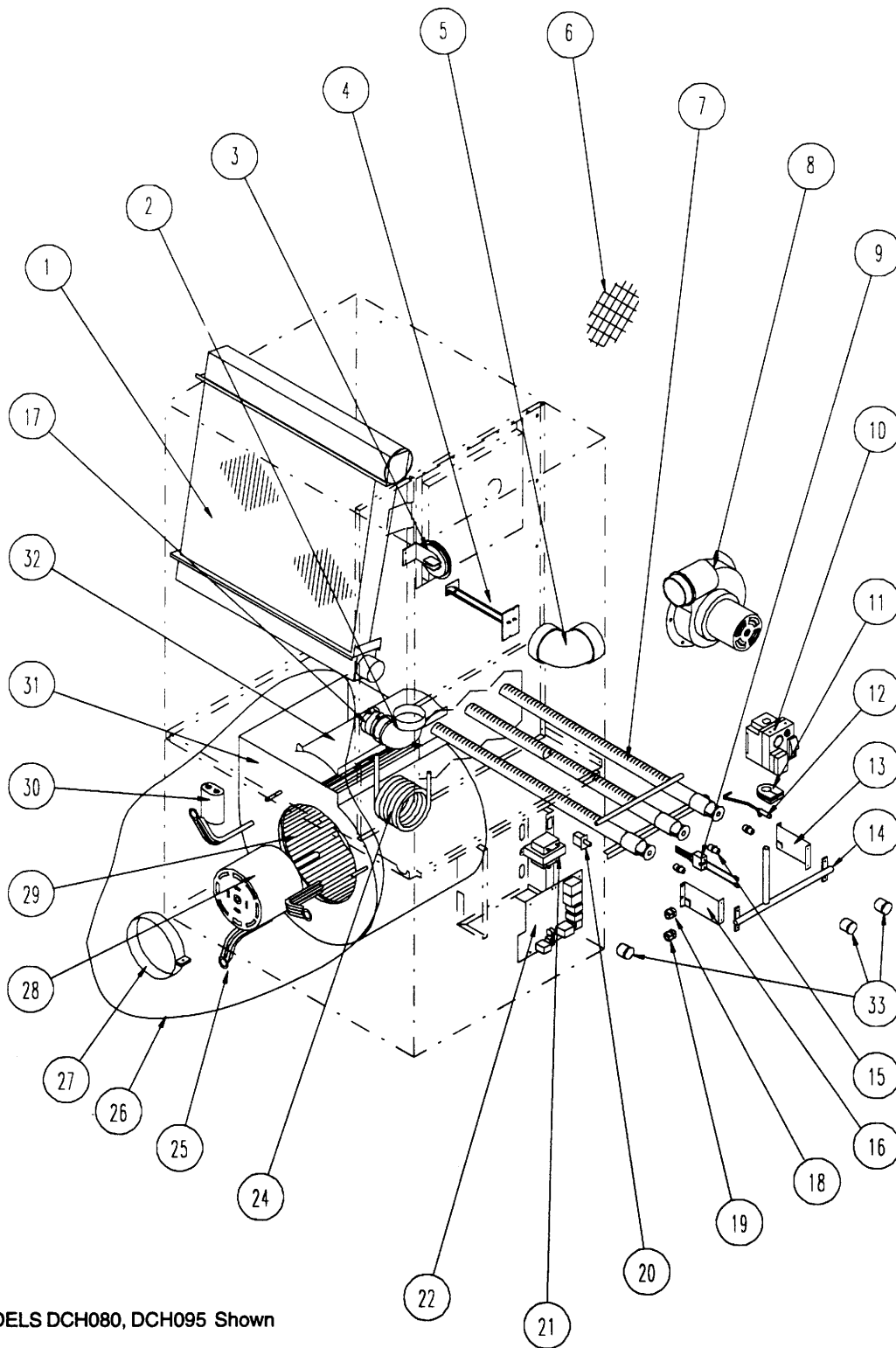
This Table references Exploded View on Page 1

# CABINET COMPONENTS

| Drawing No. | Part No. | Description             | DCHO36D30D | DCHO50D30D | DCHO65D36D | DCHO80D48D | DCHO95D60D | DCH110D60D |
|-------------|----------|-------------------------|------------|------------|------------|------------|------------|------------|
| 22          | S168-054 | Collector Box           |            | X          | X          |            |            |            |
| 22          | S168-081 | Collector Box           |            |            |            | X          | X          |            |
| 22          | S168-064 | Collector Box           |            |            |            |            |            | X          |
| 22          | S168-066 | Collector Box           | X          |            |            |            |            |            |
| 23          | 168-002  | Flue Baffle             |            | 2          | 2          | 3          | 3          | 2          |
| 24          | 106-131  | Top Fill                |            | X          | X          |            |            |            |
| 24          | 106-135  | Top Fill                |            |            |            | X          | X          |            |
| 24          | 106-136  | Top Fill                |            |            |            |            |            | X          |
| 25          | 168-013  | Flue Baffle             | 1          |            |            |            |            | 2          |
| 27          | 171-216  | Heat Exchanger Assembly |            | X          | X          |            |            |            |
| 27          | 171-217  | Heat Exchanger Assembly |            |            |            | X          | X          |            |
| 27          | 171-195  | Heat Exchanger Assembly |            |            |            |            |            | X          |
| 27          | 171-200  | Heat Exchanger Assembly | X          |            |            |            |            |            |
| 28          | S134-136 | Internal Coil Partition | X          | X          | X          | X          | X          | X          |
| 29          | 520-227  | Coil Partition Assembly | X          | X          | X          | X          | X          | X          |
| 30          | 140-133  | Coil Support            | X          | X          | X          | X          | X          | X          |
| 31          | 127-235  | Blower Base Assembly    | X          | X          | X          |            |            |            |
| 31          | 127-236  | Blower Base Assembly    |            |            |            | X          | X          |            |
| 31          | 127-237  | Blower Base Assembly    |            |            |            |            |            | X          |

**This Table references Exploded View on Page 1**

# FUNCTIONAL COMPONENTS



MODELS DCH080, DCH095 Shown

SEXP-170

**This Exploded View references the Tables on Page 6 & 7**

# FUNCTIONAL COMPONENTS

| Drawing No. | Part No. | Description                   | DCHO36D30D | DCHO50D30D | DCHO65D36D | DCHO80D48D | DCHO95D60D | DCH110D60D |
|-------------|----------|-------------------------------|------------|------------|------------|------------|------------|------------|
| 1           | 5055-002 | Coil Assembly                 |            | X          |            |            |            |            |
| 1           | 5055-003 | Coil Assembly                 | X          |            | X          |            | X          | X          |
| 1           | 5055-004 | Coil Assembly                 |            |            |            | X          |            |            |
| 2           | 6095-005 | 2" Street Elbow – PVC         | X          | X          | X          | X          | X          |            |
| 2           | 6095-008 | 2" Street Elbow – ABS         |            |            |            |            |            | X          |
| 3           | 8406-098 | Pressure Switch               |            | X          |            |            |            |            |
| 3           | 8406-099 | Pressure Switch               |            |            | X          |            |            |            |
| 3           | 8406-100 | Pressure Switch               | X          |            |            | X          | X          | X          |
| 4           | 8402-064 | Limit Control                 |            |            |            | X          | X          |            |
| 4           | 8402-067 | Limit Control                 |            |            | X          |            |            | X          |
| 4           | 8402-068 | Limit Control                 |            | X          |            |            |            |            |
| 4           | 8402-079 | Limit Control                 | X          |            |            |            |            |            |
| 5           | 6095-006 | High Temperature Elbow        | X          | X          | X          | X          | X          | X          |
| 6           | 7002-022 | 2.375" Bird Screen            | 2          | 2          | 2          |            |            |            |
| 6           | 7002-023 | 2.875" Bird Screen            | 2          | 2          | 2          |            |            |            |
| 6           | 7002-024 | 3.500" Bird Screen            | 2          | 2          | 2          | 2          | 2          | 2          |
| 7           | 9010-069 | Burner                        | X          |            |            |            |            |            |
| 7           | 9010-070 | Burner                        |            | X          | X          |            |            |            |
| 7           | 9010-071 | Burner                        |            |            |            | X          | X          |            |
| 7           | 9010-072 | Burner                        |            |            |            |            |            | X          |
| 8           | 8620-084 | Induced Draft Blower Assembly | X          | X          | X          | X          | X          | X          |
| 9           | 8553-003 | Ignitor                       | X          | X          | X          | X          | X          | X          |
| 10          | 5651-083 | Gas Valve                     | X          | X          | X          |            |            |            |
| 10          | 5651-089 | Gas Valve                     |            |            |            | X          | X          |            |
| 10          | 5651-106 | Gas Valve                     |            |            |            |            |            | X          |
| 11          | 5451-017 | Manifold Grommet              | X          | X          | X          | X          | X          | X          |
| 12          | 8554-016 | Sensor                        |            | X          | X          | X          | X          | X          |
| 12          | 8554-018 | Sensor                        | X          |            |            |            |            |            |
| 13          | 112X148  | Right Manifold Bracket        | X          | X          | X          | X          | X          | X          |
| 14          | 5818-028 | Gas Manifold                  |            | X          | X          |            |            |            |
| 14          | 5818-029 | Gas Manifold                  |            |            |            | X          | X          |            |
| 14          | 5818-030 | Gas Manifold                  |            |            |            |            |            | X          |
| 14          | 5818-031 | Gas Manifold                  | X          |            |            |            |            |            |
| 15          | 9010-010 | Gas Orifice #38               |            |            |            |            |            | X          |
| 15          | 9010-043 | Gas Orifice #36               |            |            | X          |            |            |            |
| 15          | 9010-052 | Gas Orifice 2.70mm            |            |            |            |            | X          |            |
| 15          | 9010-053 | Gas Orifice #33               | X          |            |            |            |            |            |
| 15          | 9010-054 | Gas Orifice 3/32"             |            | X          |            |            |            |            |
| 15          | 9010-057 | Gas Orifice 2.45mm            |            |            |            | X          |            |            |
| 16          | 112Y148  | Left Manifold Bracket         | X          | X          | X          | X          | X          | X          |
| 17          | 6093-007 | No-Hub Connector              | X          | X          | X          | X          | X          | X          |
| 18          | 8611-073 | Single Terminal Bushing       | X          | X          | X          | X          | X          | X          |
| 19          | 8611-074 | Double Terminal Bushing       | X          | X          | X          | X          | X          | X          |

This Table references Exploded View on Page 5

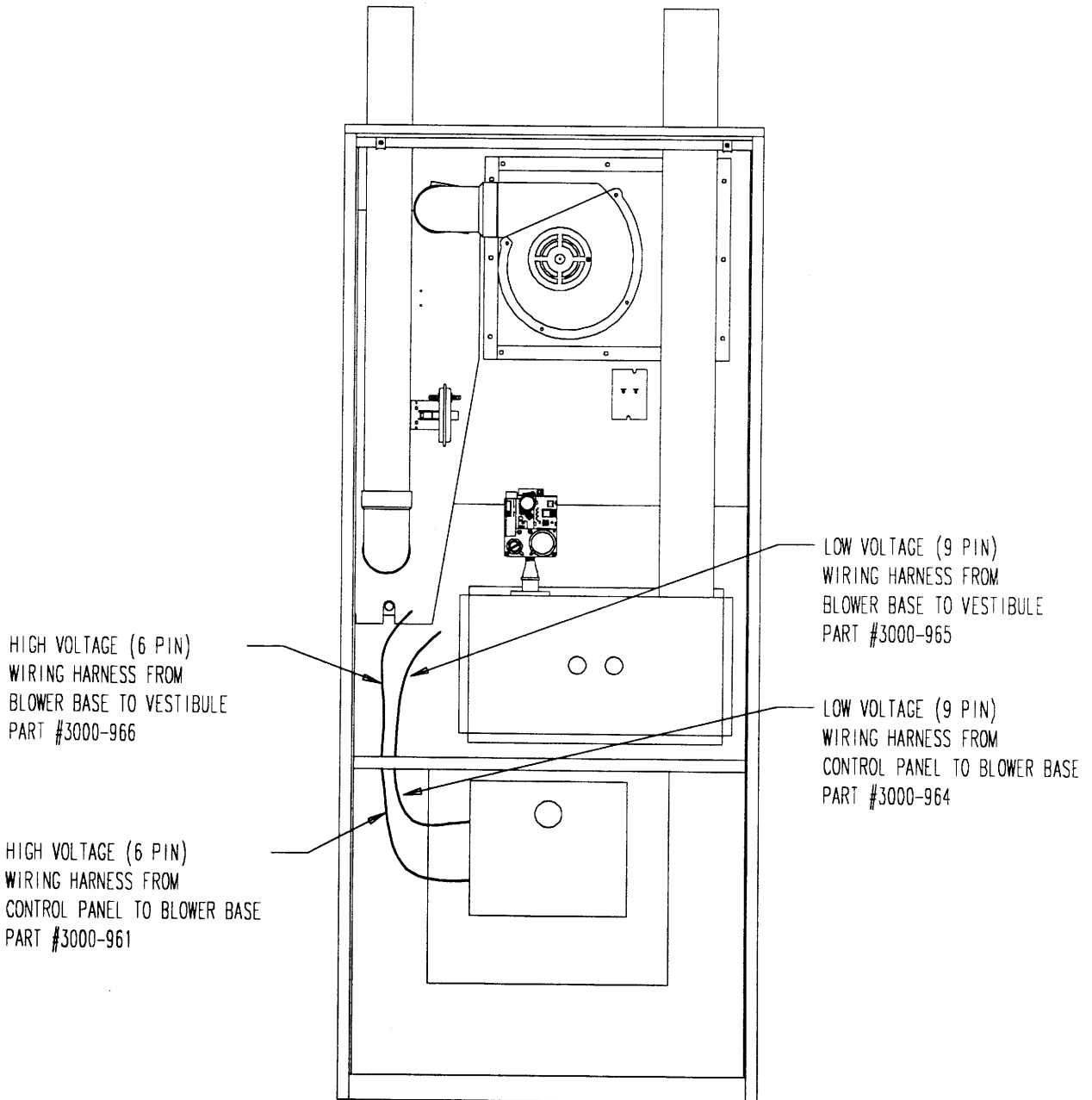
# FUNCTIONAL COMPONENTS

| Drawing No. | Part No.      | Description             | DCHO36D30D | DCHO50D30D | DCHO65D36D | DCHO80D48D | DCHO95D60D | DCH110D60D |
|-------------|---------------|-------------------------|------------|------------|------------|------------|------------|------------|
| 20          | 8406-147      | Door Switch             | X          | X          | X          | X          | X          | X          |
| 21          | 8407-045      | Transformer             | X          | X          | X          | X          | X          | X          |
| 22          | 5651-144      | Furnace Control         | X          | X          | X          | X          | X          | X          |
| 24          | 5452-005-6000 | Vinyl Drain Hose        | X          | X          | X          | X          | X          | X          |
| 25          | 8200-034      | Motor Mount Arm         | 3          | 3          | 3          | 3          |            |            |
| 25          | 8200-035      | Motor Mount Arm         |            |            |            |            | 3          | 3          |
| 26          | S900-234      | Blower Assembly         |            |            | X          |            |            |            |
| 26          | S900-235      | Blower Assembly         | X          | X          |            |            |            |            |
| 26          | S900-236      | Blower Assembly         |            |            |            | X          |            |            |
| 26          | S900-237      | Blower Assembly         |            |            |            |            | X          |            |
| 26          | S900-238      | Blower Assembly         |            |            |            |            |            | X          |
| 27          | 8200-033      | Motor Mount Band        | X          | X          | X          | X          | X          | X          |
| 28          | 8105-041      | 1/3 HP Motor 115V       |            |            | X          |            |            |            |
| 28          | 8105-038      | 1/3 HP Motor 115V       | X          | X          |            |            |            |            |
| 28          | 8106-033      | 1/2 HP Motor 115V       |            |            |            | X          |            |            |
| 28          | 8107-007      | 3/4 HP Motor 115V       |            |            |            |            | X          |            |
| 28          | 8107-008      | 3/4 HP Motor 115V       |            |            |            |            |            | X          |
| 29          | 5152-005      | Blower Wheel            | X          | X          |            |            |            |            |
| 29          | 5152-013      | Blower Wheel            |            |            | X          |            |            |            |
| 29          | 5152-053      | Blower Wheel            |            |            |            |            | X          |            |
| 29          | 5152-059      | Blower Wheel            |            |            |            | X          |            |            |
| 29          | 5152-072      | Blower Wheel            |            |            |            |            |            | X          |
| 29          | 5152-073      | Blower Wheel            |            |            |            |            |            | X          |
| 30          | 8552-002      | Capacitor 5 MFD 370V    | X          | X          | X          |            |            |            |
| 30          | 8552-004      | Capacitor 7 MFD 370V    |            |            |            | X          |            |            |
| 30          | 8552-026      | Capacitor 15 MFD 370V   |            |            |            |            | X          | X          |
| 31          | 151-082       | Blower Housing          |            |            |            | X          |            |            |
| 31          | 151-085       | Blower Housing          | X          | X          | X          |            |            |            |
| 31          | 151-102       | Blower Housing          |            |            |            |            |            | X          |
| 31          | 151-103       | Blower Housing          |            |            |            |            |            | X          |
| 31          | 5152-050      | Blower Housing (1)      |            |            |            |            | X          |            |
| 32          | 144-127       | Diffuser                | X          | X          | X          |            |            |            |
| 32          | 144-129       | Diffuser                |            |            |            | X          |            |            |
| 32          | 144-167       | Diffuser                |            |            |            |            |            | 2          |
| 32          | (1)           | Diffuser                |            |            |            |            | X          |            |
| 33          | 8611-075      | Sight Glass             | 3          | 3          | 3          | 3          | 3          | 3          |
| NS          | 112-158       | Blower Assembly Bracket |            |            |            |            |            | 2          |

(1) Drawing No. 31 part no. 5152-050 includes housing, diffuser, and wheel part no. 5152-053.

This Table references Exploded View on Page 5

# WIRE HARNESS



MIS-747

MODELS DCH080, DCH095 Shown