

Replacement Parts Manual

DOWNFLOW GAS FURNACE

Models:

DCC050D30D

DCC065D36D

DCC080D48D

DCC095D48D

General Notes

- Revised and/or additional pages may be issued from time to time.
- A complete and current manual consists of pages shown in the following contents section.

Contents

Description	Page
Cabinet Components	
• Exploded View	1
• Usage List	2
Functional Components	
• Exploded View	3
• Usage List	4
• Usage List	5
Wire Harness	
• Drawing	6

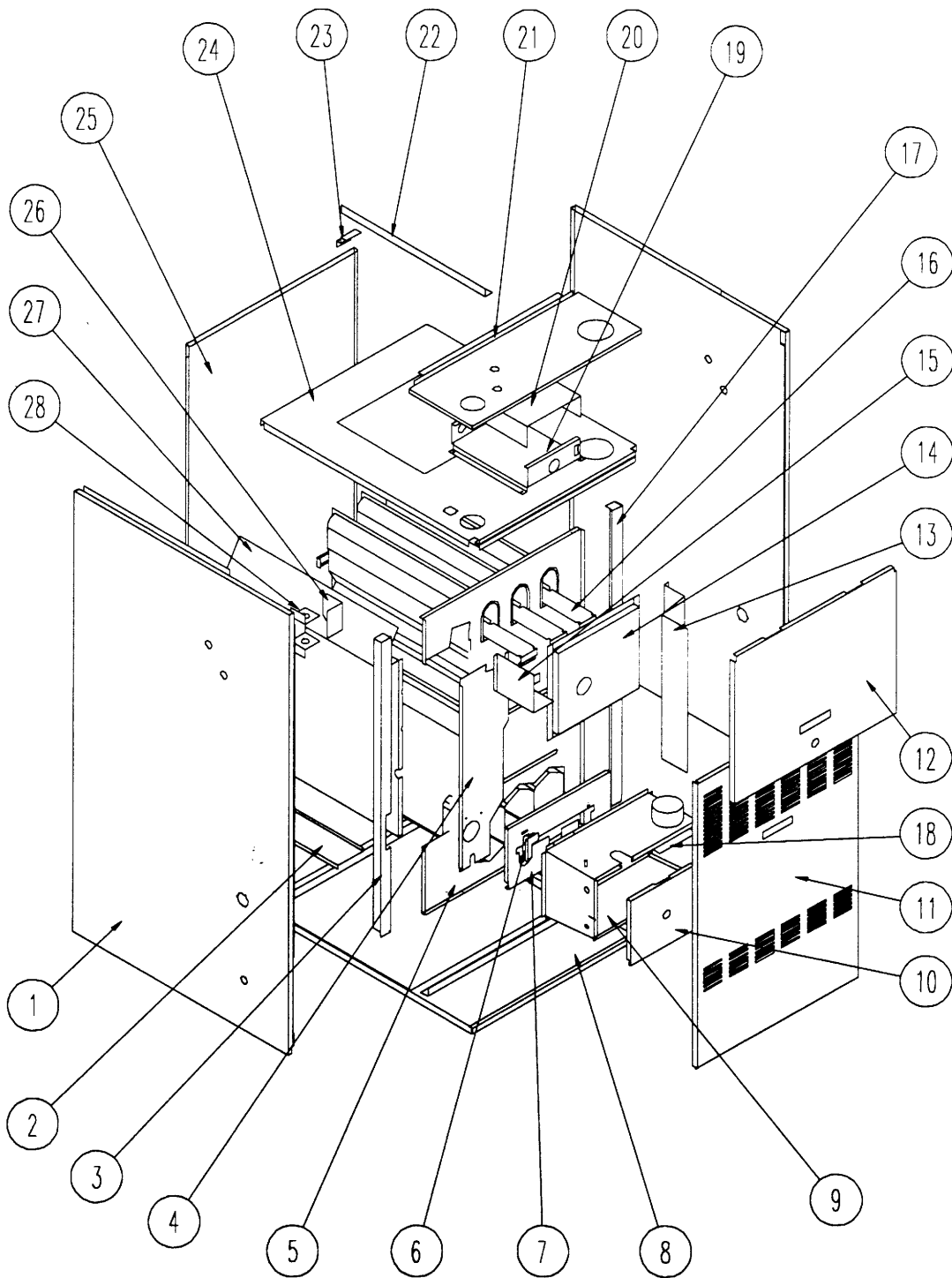


BARD MANUFACTURING COMPANY
Bryan, Ohio 43506

Since 1914...Moving ahead, just as planned.

Manual: 2 11 0-877
Supersedes:
Date: 06-1 9-98

CABINET COMPONENTS



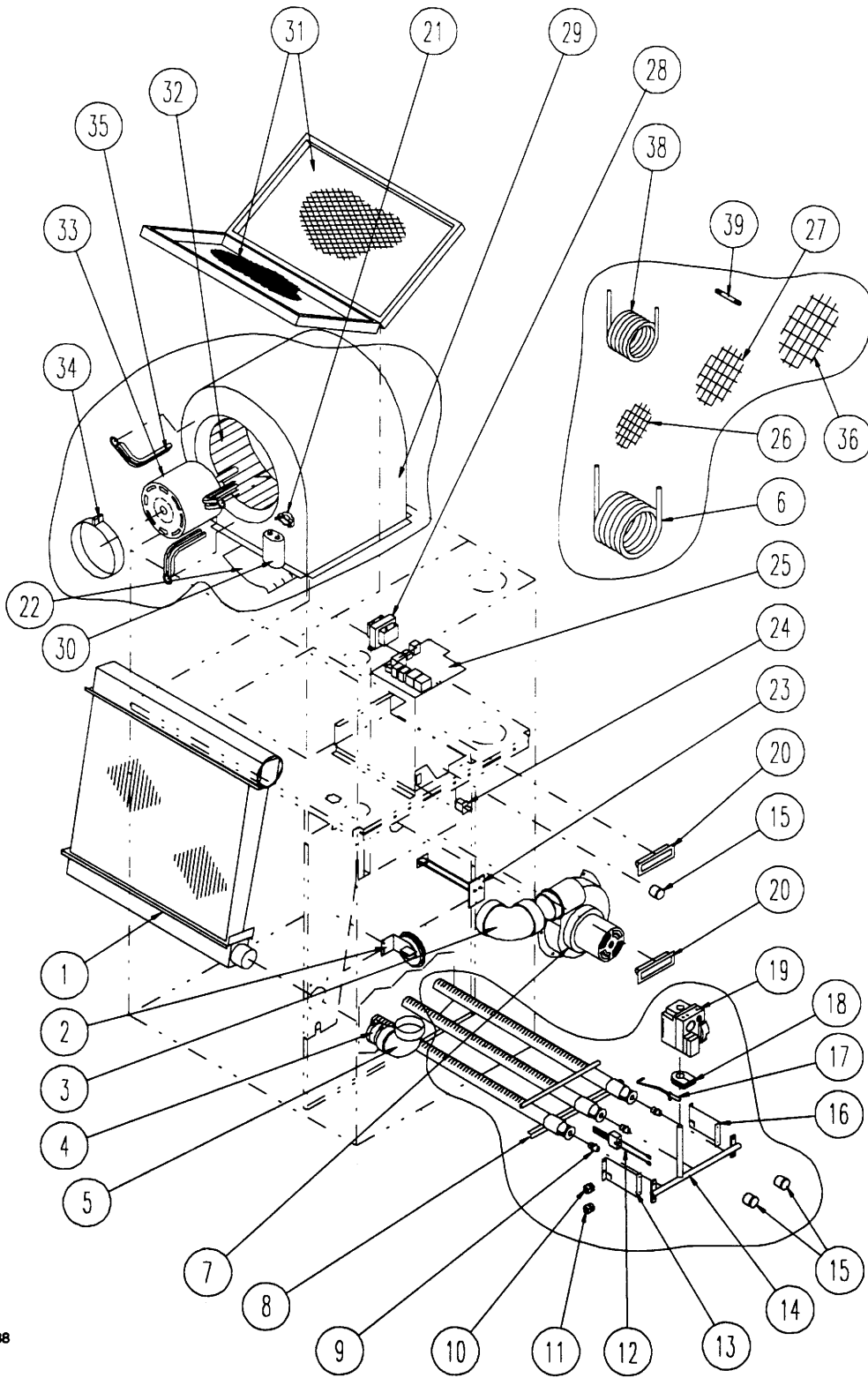
SEXP-187

CABINET COMPONENTS

Drawing No.	Part No.	Description	DCCO50D30D	DCCO65D36D	DCCO80D48D	DCCO95D48D
1	500-269	Left Side	X	X	X	X
2	140-133	Coil Support	X	X	X	X
3	104-885	Left Side Angle	X	X	X	X
4	520-227	Coil Partition Assembly	X	X	X	X
5	171-198	Heat Exchanger Assembly	X	X		
5	171-199	Heat Exchanger Assembly	X	X		
6	112-147	Ignitor Bracket	X	X	X	X
7	168-050	Secondary Air Restrictor	X	X		
7	168-055	Secondary Air Restrictor			X	X
8	126-217	Lower Base Assembly	X	X		
8	126-218	Lower Base Assembly			X	X
9	913-0066	Burner Box	X	X		
9	913-0067	Burner Box			X	X
10	S168-052	Burner Box Cover	X	X		
10	S168-058	Burner Box Cover			X	X
11	S152-227	Vestibule Door	X	X		
11	S152-228	Vestibule Door			X	X
12	S152-225	Blower Door	X	X		
12	S152-226	Blower Door			X	X
13	134-121	Intake Air Shield Assembly	X	X		
13	S134-133	Intake Air Shield Assembly			X	X
14	S168-054	Collector Box Assembly	X	X		
14	S168-081	Collector Box Assembly			X	X
15	134-120	Vent Air Shield	X	X	X	X
16	168-080	Flue Baffle	2	2	3	3
17	104-886	Right Side angle	X	X	X	X
18	134-119	Combustion Air Diffuser	X	X	X	X
19	116-181	Control Panel	X	X	X	X
20	132-118	Control Panel Cover	X	X	X	X
21	106-143	Top Fill	X	X		
21	106-144	Top Fill			X	X
22	130-098	Filter Support Angle	X	X	X	X
23	130-097	Filter Support Bracket	X	X	X	X
24	126-219	Blower Base	X	X		
24	126-220	Blower Base			X	X
25	508-099	Back Assembly	X	X		
25	508-100	Back Assembly			X	X
26	132-117	Junction Box Door	X	X	X	X
27	134-132	Internal Coil Air Deflector	X	X	X	X
28	116-145	Junction Boxc	X	X	X	X
29	500-268	Right Side	X	X	X	X

This Table references Exploded View on Page 1

FUNCTIONAL COMPONENTS



SEXP-188

This Exploded View references the Tables on Page 4 & 5

FUNCTIONAL COMPONENTS

Drawing No.	Part No.	Description	DCCO50D30D	DCCO65D36D	DCCO80D48D	DCCO95D48D
1	5055-002	Coil Assembly	X			
1	5055-003	Coil Assembly		X		X
1	5055-004	Coil Assembly			X	
2	8406-098	Pressure Switch	X			
2	8406-100	Pressure Switch			X	X
2	8406-099	Pressure Switch		X		
3	6095-006	High Temperature Elbow	X	X	X	X
4	6093-007	No-Hub Connector	X	X	X	X
5	6095-008	2" ABS Street Elbow	X	X	X	X
6	5452-005-300	Vinyl Dran Hose	X	X	X	X
7	8620-084	Combustion Air Blower	X	X	X	X
8	9010-070	2 Section Burner	X	X		
8	9010-071	3 Section Burner			X	X
9	9010-043	Gas Orifice		2		
9	9010-054	Gas Orifice	2			
9	9010-057	Gas Orifice			3	
9	9010-052	Gas Orifice				3
10	8611-073	Single Terminal Bushing	X	X	X	X
11	8611-074	Double Terminal Bushing	X	X	X	X
12	8553-003	Ignitor	X	X	X	X
13	112Y148	Left Manifold Bracket	X	X	X	X
14	5818-028	Gas Manifold	X	X		
14	5818-029	Gas Manifold			X	X
15	8611-075	Sight Glass	3	3	3	3
16	112X148	Right Manifold Bracket	X	X	X	X
17	8554-016	Sensor	X	X	X	X
18	5451-017	Monifold Grommet	X	X	X	X
19	5651-083	Gas Valve	X	X		
19	8651-089	Gas Valve			X	X
20	1171-025	Door Pull	X	X	X	X
21	8402-050	Upper Limit Control	X	X	X	X
22	144-127	Diffuser	X	X		
22	144-129	Diffuser			X	X
23	8402-077	Primary Limit Control	X			
23	8402-078	Primary Limit Control		X		
23	8402-064	Primary Limit Control			X	
23	8402-067	Primary Limit Control				X
24	8406-047	Secondary Limit Control	X	X	X	X
25	5651-144	Furnace Control	X	X	X	X
26	7002-022	2.375" Diameter Bird Screen	X	X		
27	7002-023	2.875" Diameter Bird Screen	X	X		
28	8407-045	Transformer	X	X	X	X
29	151-089	Blower Housing	X	X		
29	151-077	Blower Housing			X	X

This Table references Exploded View on Page 3

FUNCTIONAL COMPONENTS

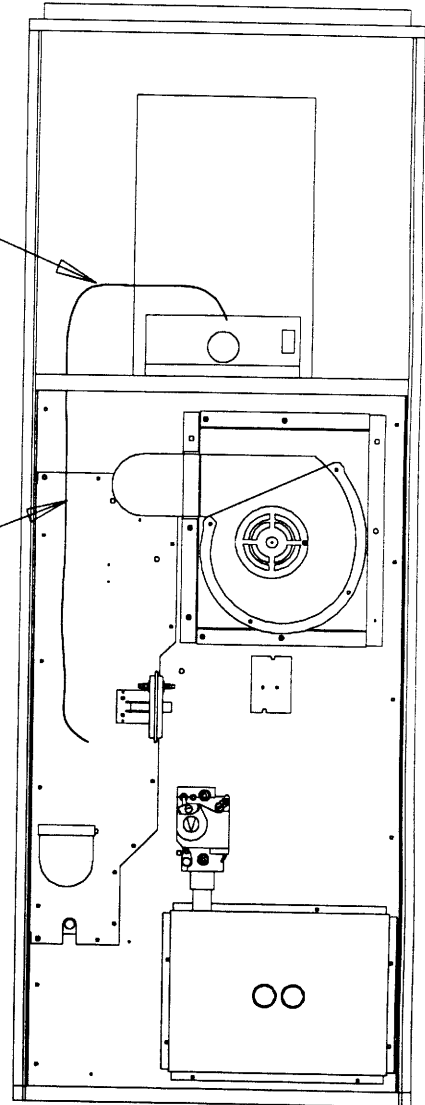
Drawing No.	Part No.	Description	DCCO50D30D	DCCO65D36D	DCCO80D48D	DCCO95D48D
30	8552-002	Capacitor 5 MFD 370V	X	X		
30	8552-004	Capacitor 7-1/2 MFD 307V			X	X
31	7003-001	10x20x1 Washable Filter	2	2		
31	7003-037	12x20x1 Washable Filter			2	2
32	5152-005	Blower Wheel 9-8DD	X			
32	5152-013	Blower Wheel 10-8DD		X		
32	5152-059	Blower Wheel 10-10DD			X	X
33	8200-034	Motor Mount Arm	3	3	3	3
34	8200-033	Motor Mount Band	X	X	X	X
35	8105-038	1/3 HP Motor 115V	X			
35	8105-041	1/3 HP Motor 115V		X		
35	8106-033	1/2 HP Motor 115V			X	X
36	7002-024	3.500" Diameter Bird Screen	X	X	X	X
37	S900-187	Blower Assembly			X	X
37	S900-188	Blower Assembly	X			
37	S900-189	Blower Assembly		X		
38	5452-006-3600	Silicone Drain Tubing	X	X	X	X
39	6093-009	Hose Coupling	X	X	X	X
NS	4046-157	Wiring Diagram	X	X	X	X

This Table references Exploded View on Page 3

WIRE HARNESS

HIGH VOLTAGE WIRE HARNESS
CONTROL PANEL TO BLOWER BASE
PART #3000-1084

HIGH VOLTAGE WIRE HARNESS
BLOWER BASE TO VESTIBULE
PART #3000-982



MIS-1264