

REPLACEMENT PARTS MANUAL

OIL FIRED FURNACE MODELS FC085D36A

Manual 2110-910

Revision

Date 1-03-91

Supersedes

* GENERAL NOTES *

*Revised and/or additional pages may be issued from time to time.

*A complete and current manual consists of pages dated as shown in the following index.

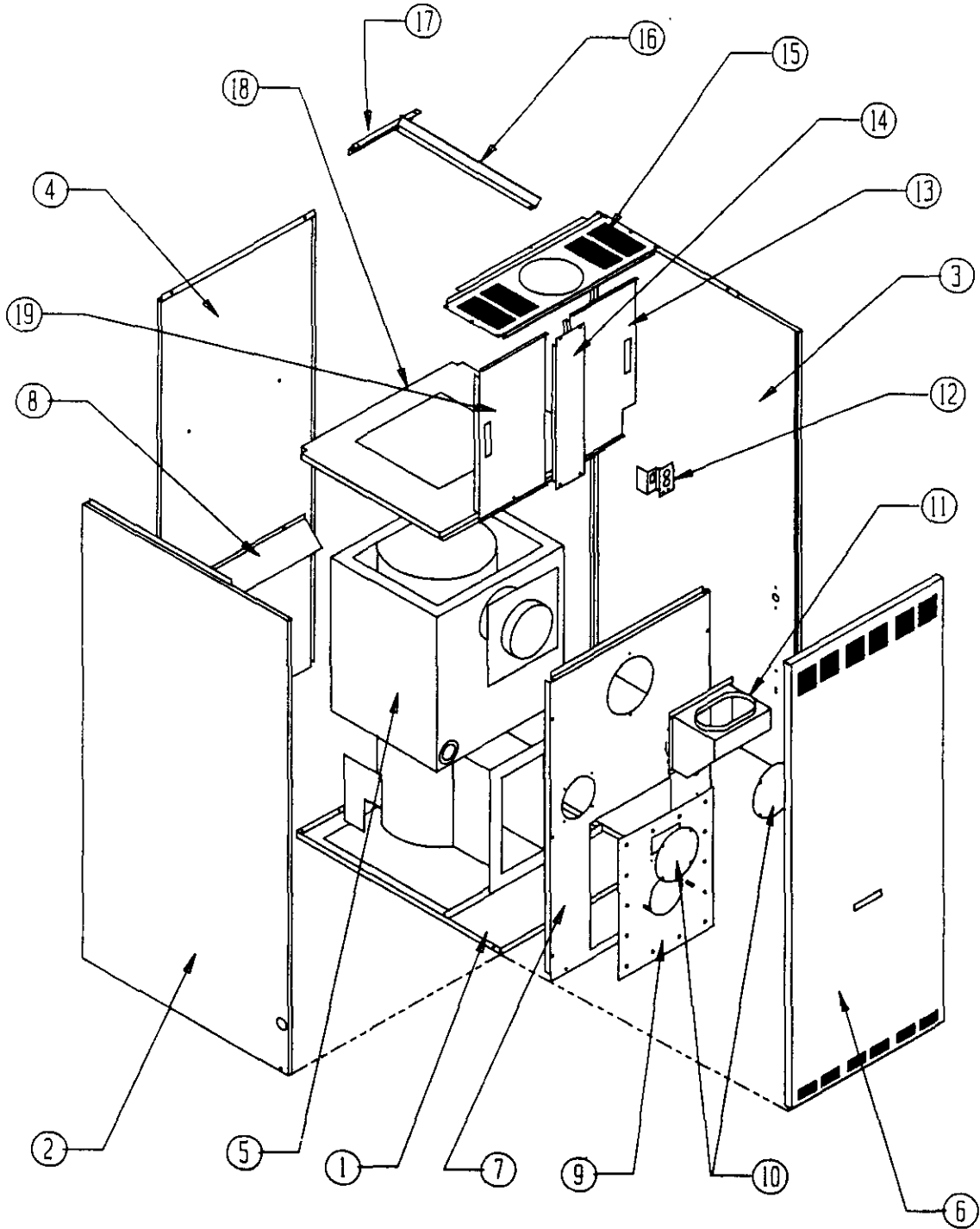
** INDEX **

<u>Page Description</u>	<u>Page</u>	<u>Date</u>	<u>Supersedes</u>
Cabinet Components--Exploded View	1	1-03-91	
" " --Usage List	2	1-03-91	
Functional Components--Exploded View	3	1-03-91	
" " --Usage List	4	1-03-91	
Burner Components--Layout	5	1-03-91	
" " --Usage List	6	1-03-91	

*** IMPORTANT ***

Contact the installing and/or local Bard distributor for all parts requirements. Make sure you have the complete model and serial number available from the unit rating plate.

CABINET COMPONENTS



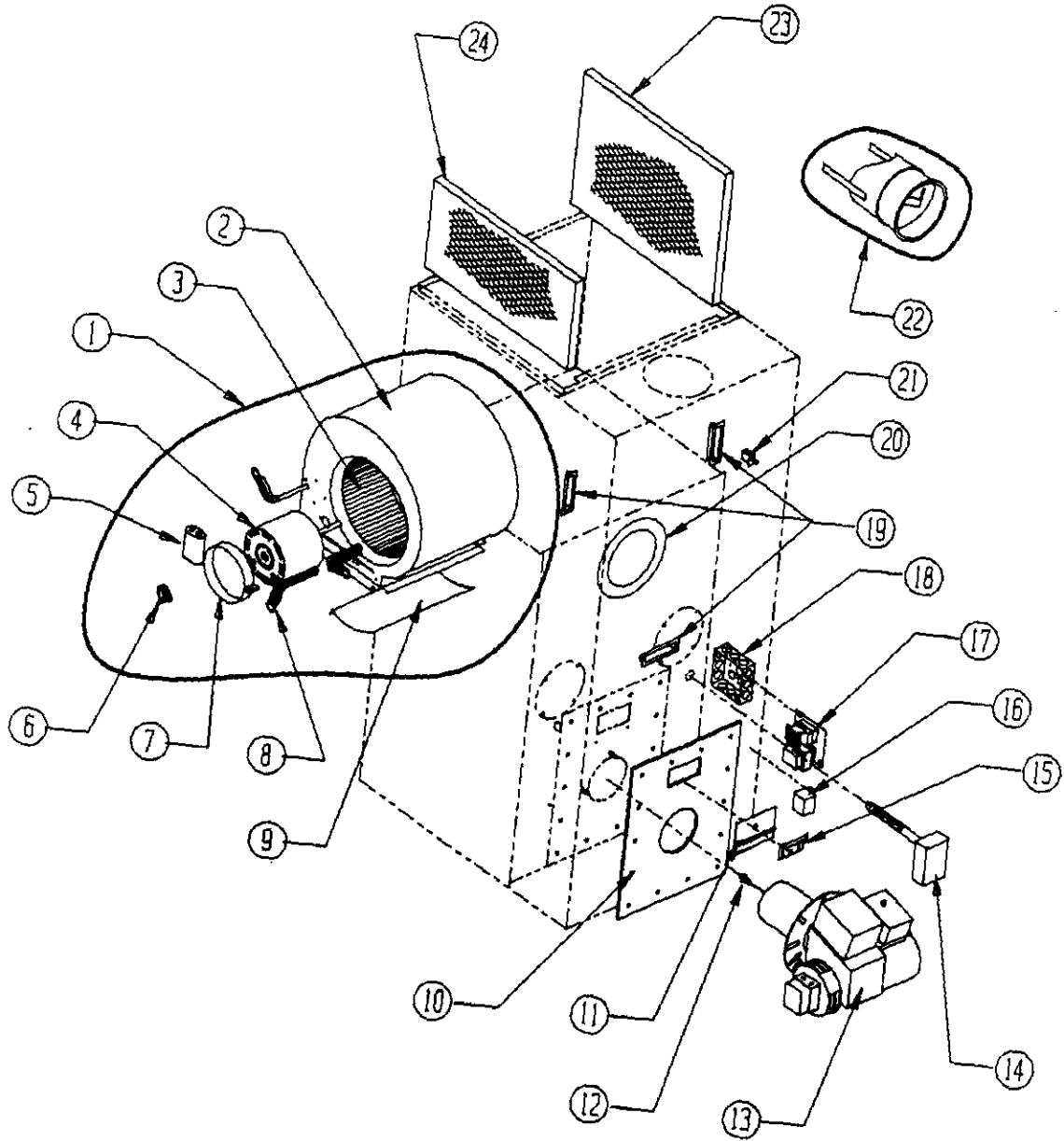
Date: 1-3-91
Supersedes:

CABINET COMPONENTS

Dwg. No.	Part No.	Description	FC085D36A
1	127-177	Lower Base Assembly	X
2	501-219	Left Side Assembly	X
3	501-218	Right Side Assembly	X
4	508-084	Back Assembly	X
5	171-176	Heat Exchanger Assembly	X
6	152-193	Burner Door Assembly	X
7	520-168	Partition Assembly	X
8	134-111	Rear Air Deflector	X
9	161-027	Front Plate Weld Assembly	X
10	542-024	Clean Out Cover Assembly	2
11	913-0057	Flue Box Assembly	X
12	112Y028	Door Switch Bracket	X
13	152-194	Right Filter Door	X
14	152-196	Center Filter Access	X
15	107-127	Top Fill	X
16	130-023	Filter Support	X
17	130-062	Rear Filter Support	X
18	126-178	Blower Base	X
19	152-195	Left Filter Door	X

Date: 1-3-91
Supersedes:

FUNCTIONAL COMPONENTS



Date: 1-3-91
Supersedes:

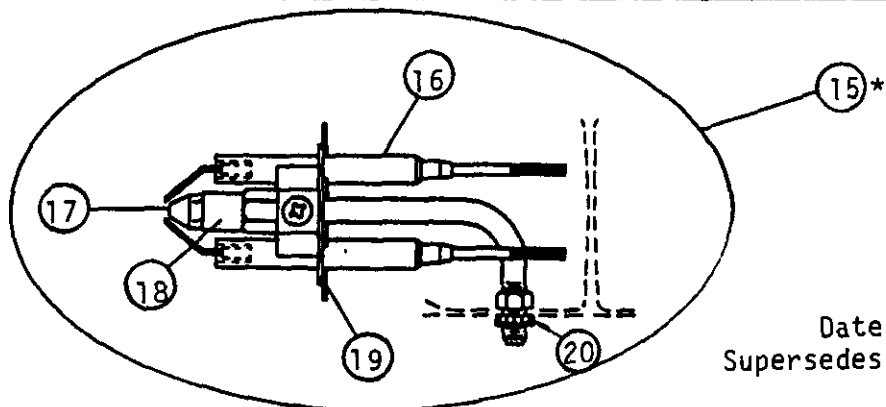
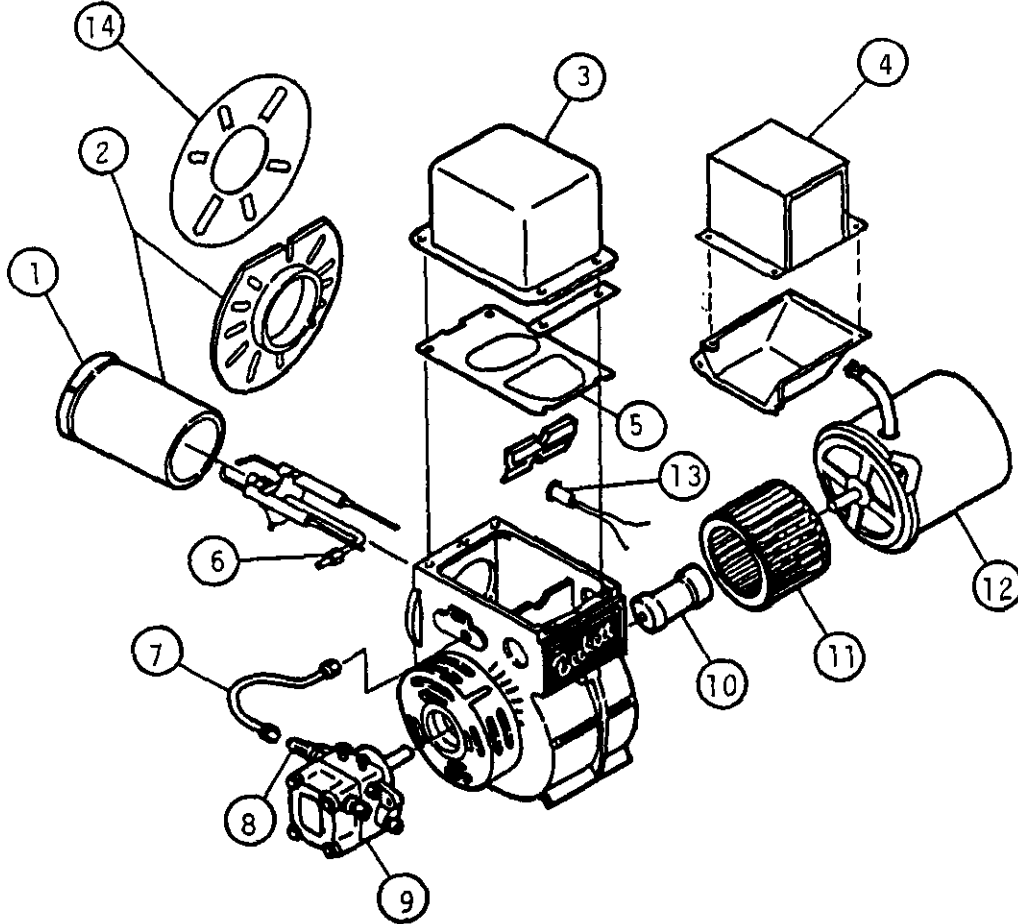
FUNCTIONAL COMPONENTS

Dwg. No.	Part No.	Description	FC085036A
1	900-161	Blower Assembly	X
2	151-095	Blower Housing Spotweld Assembly	X
3	5152-014	Blower Wheel 10-9	X
4	8105-036	Motor 1/3 HP 115V CCW 1050 RPM	X
5	8552-002	Capacitor 5/370	X
6	8402-020	Limit Switch 135-120	X
7	8200-033	Motor Mount Band	X
8	8200-034	Motor Mount Arm	3
9	144-128	Diffuser	X
10	1921-021	Front Plate Ceramic Fiber Blanket	X
11	142-027	Inspection Door Hinge	X
12	9011-001	Nozzle .75 GPH 80 Degree Hollow	X
13	9020-017	AF Burner Assembly	X
14	912-0041	Fan and Limit Assembly	X
15	142-026	Inspection Door Cover Plate	X
16	8201-008	Fan Relay	X
17	8201-006	Fan Center (Two Speed Relay)	X
18	8614-001	4x4 Junction Box	X
19	1171-025	Flush Mount Door Pull	X
20	1921-006	Fiberfrax Gasket	X
21	8406-013	Panel Mount Door Switch	X
22	8601-031	RC6 Barometric Damper	X
23	7003-022	15x20x1 Permanent Filter	X
24	7003-021	10x20x1 Permanent Filter	X

Date: 1-3-91
Supersedes:

Burner Replacement Parts

Oil Burners



Nozzle Line Electrode Assembly

*Nozzle is not included in assembly.

Date: 1-3-91
Supersedes:

2110-910
Page 5

BURNER COMPONENTS

Dwg. No.	Part No.	Beckett Part No.	Description	FC085D36A
1	9022-003	F3	Head	x
2	9022-004	51236007BK	Air Tube and Flange Assy. 7-5/8" Insertion	x
3	9022-022	5878U	Transformer w/Gasket AFG	x
4	9022-005	7296U	Primary Control	x
5	9022-006	31405	Transformer Gasket	x
6	9022-007	571801	Bulkhead Fitting	x
7	9022-008	5636	Connector Tube	x
8	9022-009	2256	Pump Outlet Elbow	x
9	9022-010	2460U	Pump, Single Stage	x
10	9022-011	2454	Coupling	x
11	9022-012	2459U	Blower	x
12	9022-013	2456U	Motor 1/7 HP 3450 RPM	x
13	9022-020	5963001	Cad Cell	x
14	9022-021	3811	Mounting Flange Gasket	x
15	9022-014	NL90YH	Nozzle Line Electrode Assembly	x
16	9022-017	5780	Electrode Insulator Assembly	x
17	9011-001		Nozzle .75 GPH 80 degree A	x
18	9022-016	213U	Nozzle Adapter, Single	x
19	9022-023	3384P	Static Plate 3-3/8"	x
20	9022-018	3666	Bulkhead Fitting Locknut	x

Date: 1-3-91
Supersedes:

