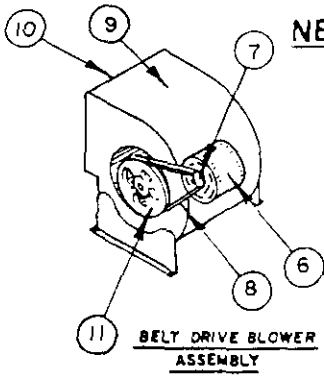
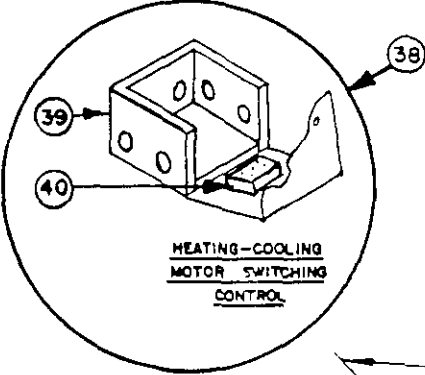
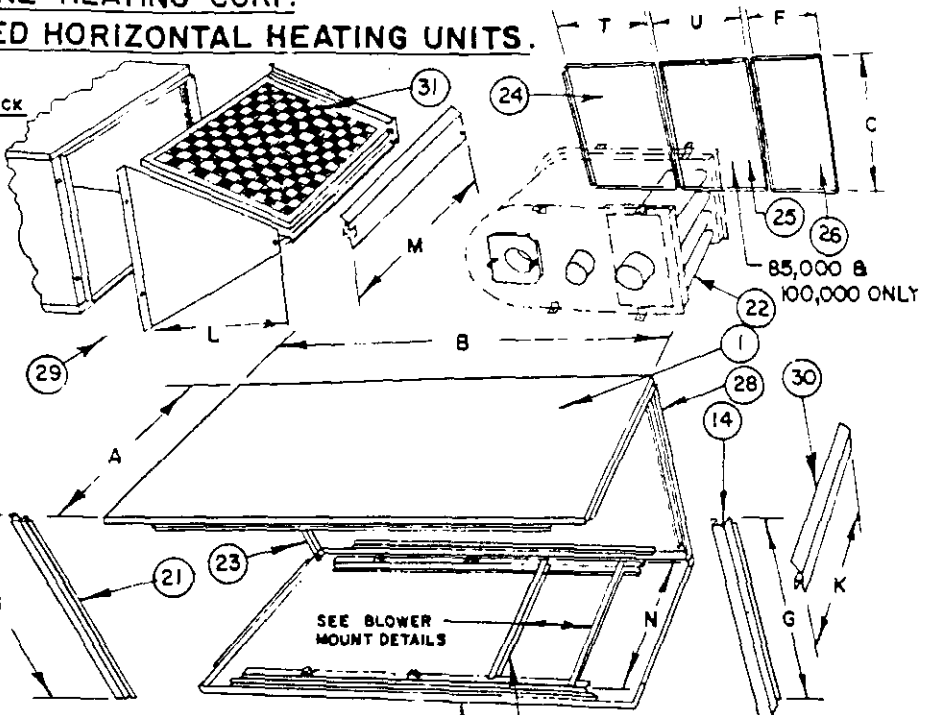


DUCANE HEATING CORP. NEUTER OIL FIRED HORIZONTAL HEATING UNITS.



EXTERNAL FILTER RACK ARRANGEMENT
100,000; 125,000
85,000 & 100,000 ONLY



BLOWER MOUNT IDENTIFICATION

X

85,000 & 100,000 FOR 10A10 BLOWER AND 200,000. SEE "N" DIMENSION FOR LENGTH.

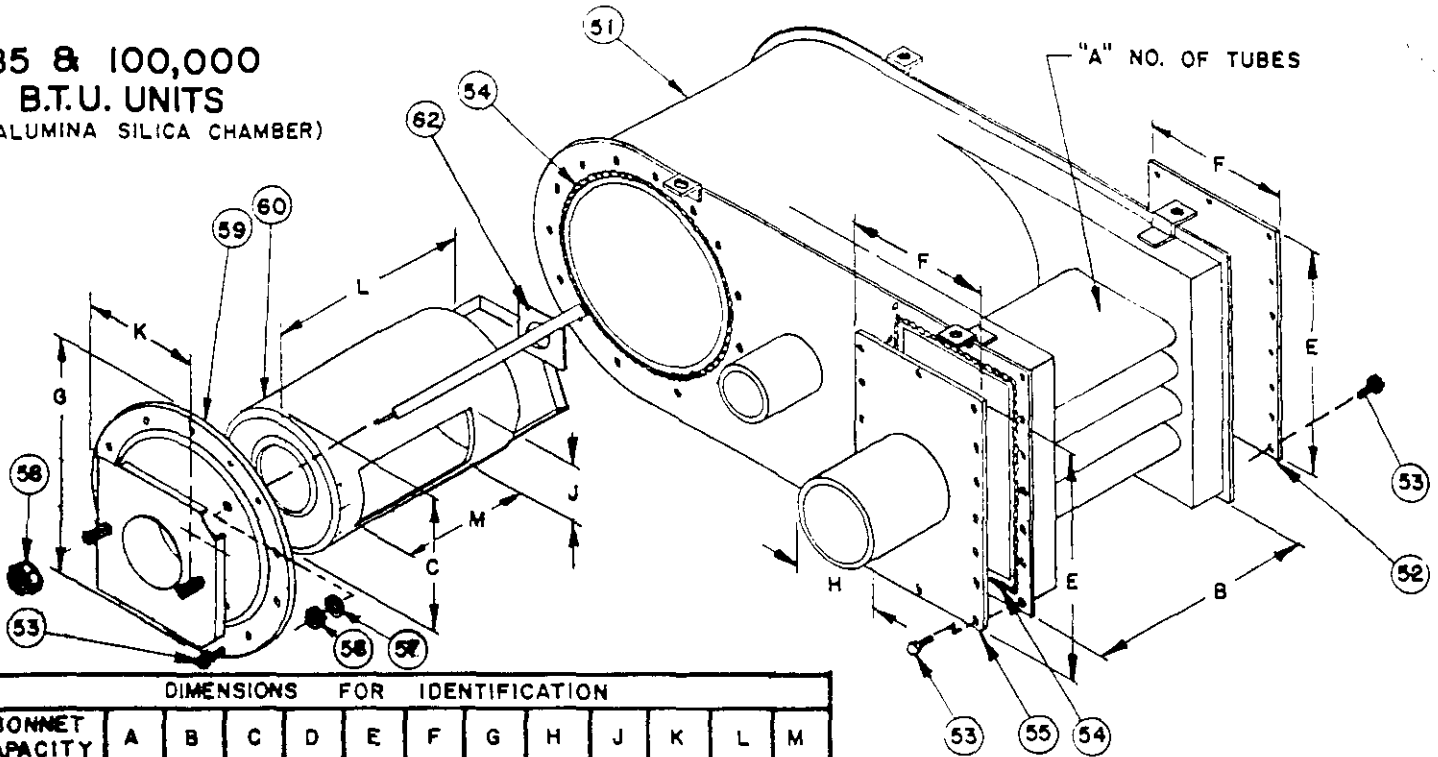
MODEL	X
200,000 FRONT	3 ¹ / ₈
200,000 REAR	1 ¹ / ₂
85,000 & 100,000	1 ¹ / ₄

DIMENSIONS FOR IDENTIFICATION

BONNET CAPACITY	A	B	C	D	E	F	G	H	J	K	L	M	N	P	R	S	T	U
85,000	21	68	19 ¹ / ₂	25 ¹ / ₂	21 ³ / ₈	18 ¹ / ₁₆	21 ¹⁵ / ₁₆	21 ⁷ / ₈	20 ¹⁵ / ₁₆				18 ¹ / ₂	4	7	7 ¹ / ₂	25 ¹ / ₂	21 ³ / ₈
100,000	23	72	19 ¹ / ₂	25 ¹ / ₂	24 ¹ / ₂	18 ¹⁵ / ₁₆	21 ¹⁵ / ₁₆	21 ⁷ / ₈	22 ¹⁵ / ₁₆		18 ¹ / ₈	19 ¹⁵ / ₁₆	20 ¹ / ₂	4	7	7 ¹ / ₂	25 ¹ / ₂	24 ¹ / ₂
125,000	25	75	19 ¹ / ₂	27 ¹ / ₂	21 ¹ / ₄	23 ³ / ₁₆	21 ¹⁵ / ₁₆	21 ⁷ / ₈	24 ¹⁵ / ₁₆		18 ¹ / ₈	19 ¹⁵ / ₁₆		4	7	7 ¹ / ₂	48 ³ / ₄	
150,000	27	78	19 ¹ / ₂	27 ¹ / ₂	22 ¹ / ₂	24 ¹⁵ / ₁₆	21 ¹⁵ / ₁₆	21 ⁷ / ₈	26 ¹⁵ / ₁₆		18 ¹ / ₈	19 ¹⁵ / ₁₆		4	7	7 ¹ / ₂	50	
200,000	29	80	27 ¹ / ₂	33 ⁹ / ₁₆	22 ⁵ / ₈	20 ³ / ₄	29 ¹⁵ / ₁₆	29 ⁷ / ₈	28 ¹⁵ / ₁₆	28 ¹ / ₂			26	4	8	8 ¹ / ₂	56 ³ / ₁₆	

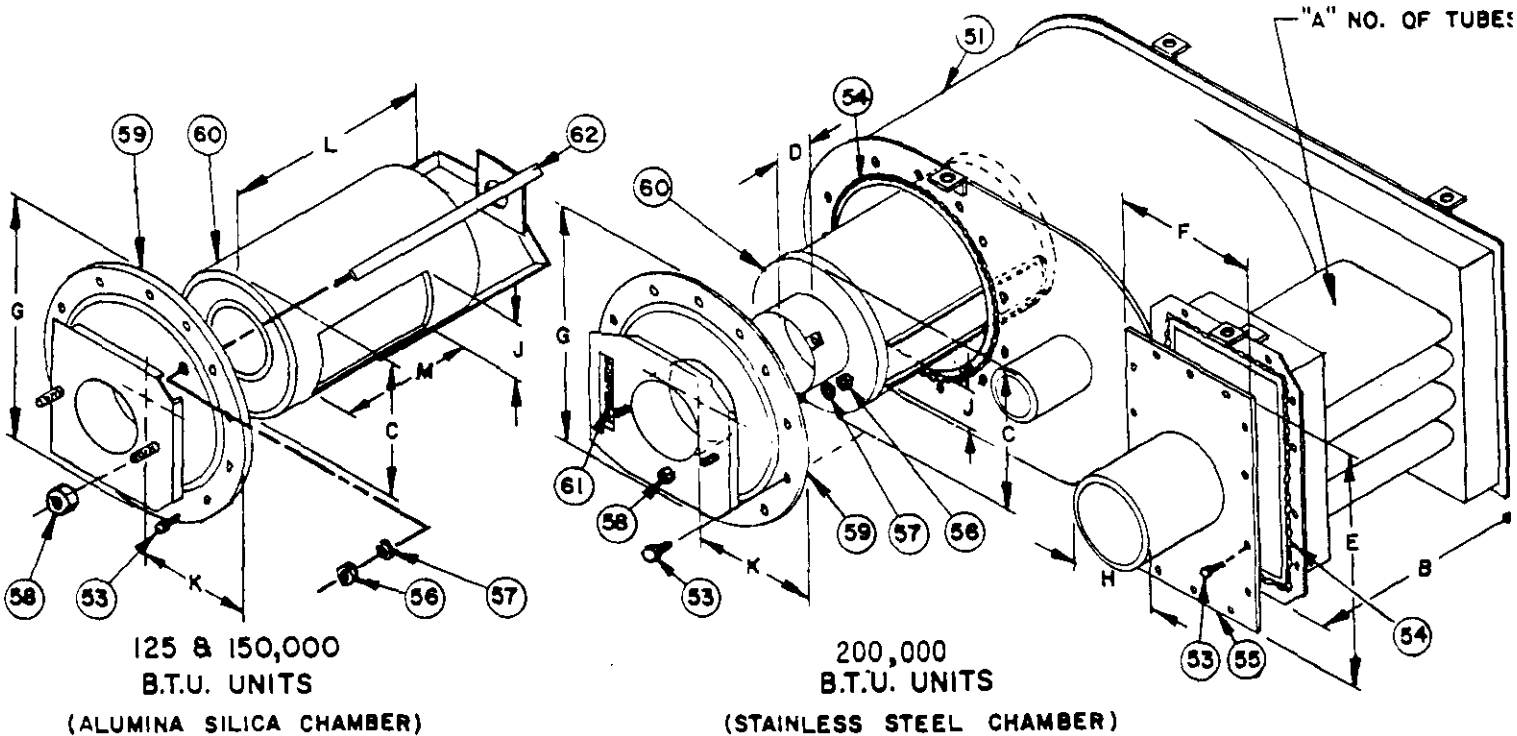
Date: 01/10/92
Supersedes:

**85 & 100,000
B.T.U. UNITS**
(ALUMINA SILICA CHAMBER)



DIMENSIONS FOR IDENTIFICATION												
BONNET CAPACITY	A	B	C	D	E	F	G	H	J	K	L	M
85,000	4	16	9 $\frac{3}{4}$		16 $\frac{1}{2}$	13	15 $\frac{1}{2}$	7	6	7 $\frac{3}{4}$	15 $\frac{3}{4}$	7 $\frac{1}{2}$
100,000	4	18	11 $\frac{1}{4}$		16 $\frac{1}{2}$	13	15 $\frac{1}{2}$	7	6	7 $\frac{3}{4}$	17 $\frac{3}{4}$	9 $\frac{1}{2}$
125,000	5	20	11 $\frac{1}{4}$		18 $\frac{5}{8}$	12 $\frac{3}{8}$	16 $\frac{1}{2}$	7	6	8 $\frac{1}{4}$	19 $\frac{3}{4}$	11 $\frac{1}{2}$
150,000	6	22	12 $\frac{1}{4}$		18 $\frac{5}{8}$	12 $\frac{3}{8}$	16 $\frac{1}{2}$	7	6	8 $\frac{1}{4}$	21 $\frac{3}{4}$	12 $\frac{1}{2}$
200,000	8	23	14	4	26	12 $\frac{3}{8}$	21 $\frac{1}{2}$	8	8 $\frac{1}{2}$	11 $\frac{3}{4}$		

**HEAT EXCHANGERS FOR
NEUTER OIL FIRED (REVERSIBLE FLUE
HORIZONTAL HEATING UNITS
BONNET CAPACITY (1,000 B.T.U./HR.) 85, 100,**



**125 & 150,000
B.T.U. UNITS**

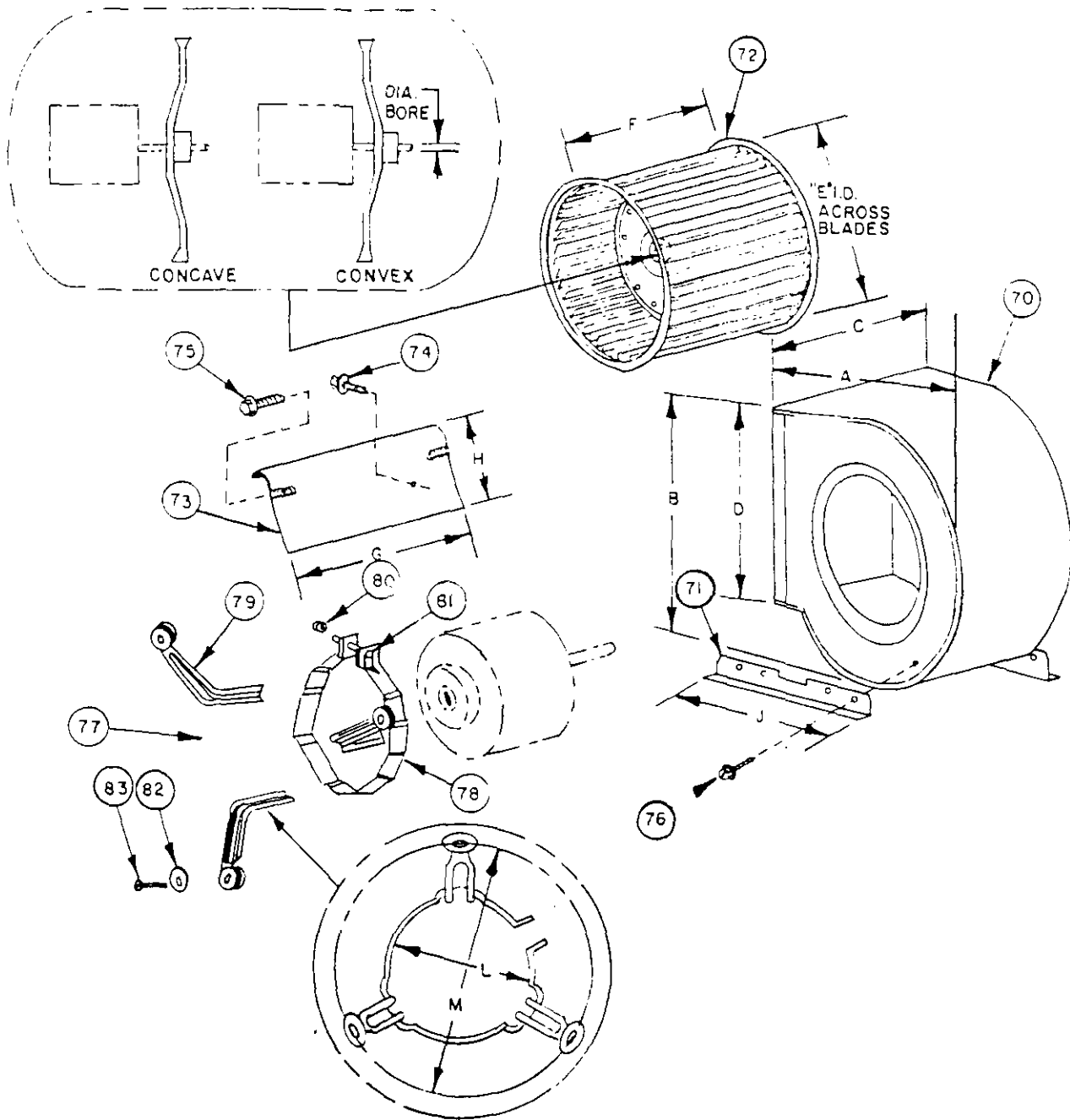
(ALUMINA SILICA CHAMBER)

**200,000
B.T.U. UNITS**

(STAINLESS STEEL CHAMBER)

**HEAT EXCHANGERS FOR NEUTER OIL FIRED HORIZONTAL HEATING UNITS
BONNET CAPACITY (1,000 B.T.U./HR.) 125, 150, 200**

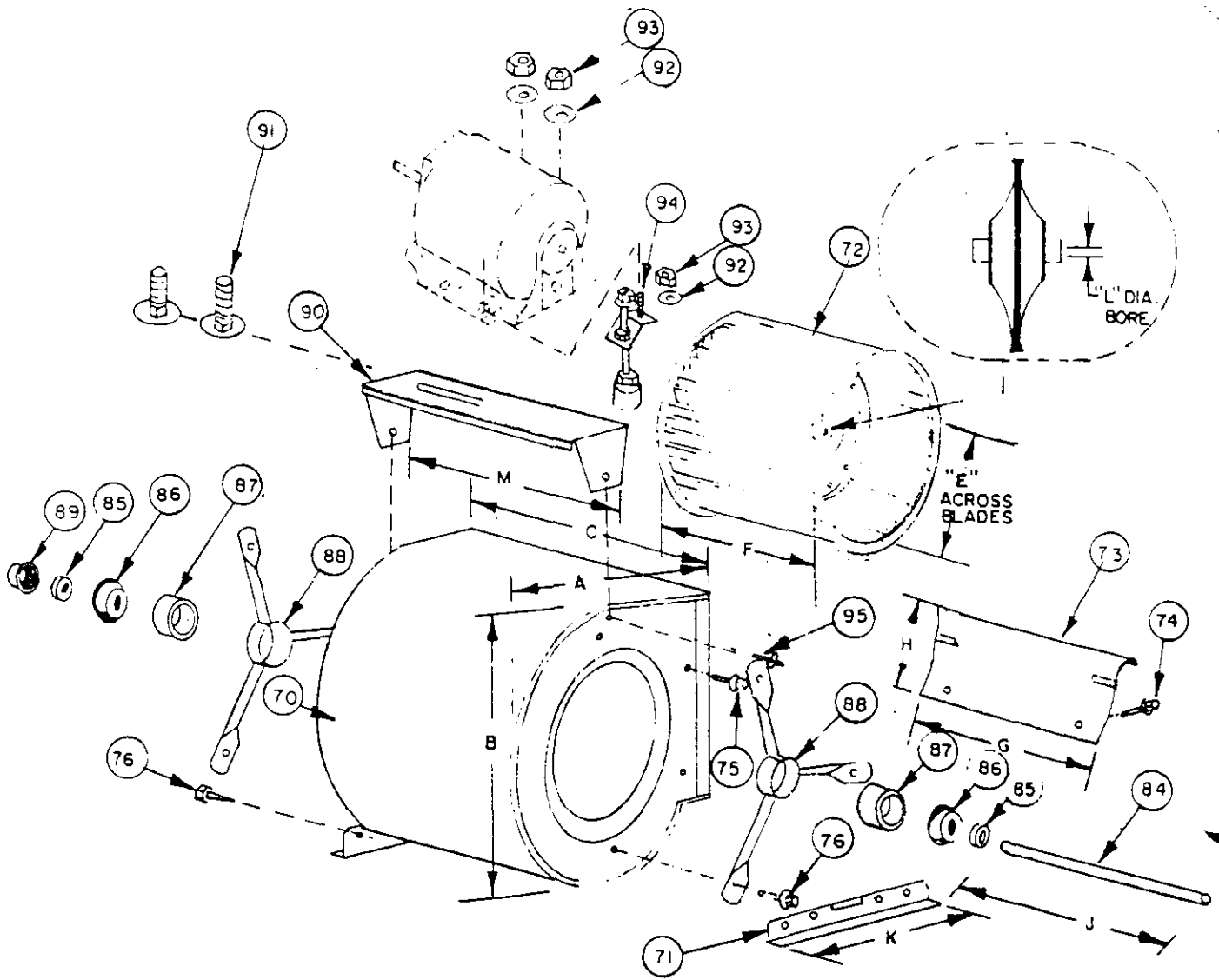
Date: 01/10/92
Supersedes:



Model	DIMENSIONS FOR IDENTIFICATION																							
	BLOWER SIZE	A	B	C	D	E	F	G	H	J	K	L	M											
FS085		9	3	1	3	7	5	25	1	3	1	5	5											
FS100	10 X 10	16	16	17	8	13	8	11	8	8	8	10	8	12	32	5	8	14	8	2	5	8	12	16

Date: 01/10/92
Supersedes:

DIRECT DRIVE BLOWER



Model	DIMENSIONS FOR IDENTIFICATION												
	BLOWER SIZE	A	B	C	D	E	F	G	H	J	K	L	M
FS125	12 X 9	3 19 8	3 20 8	1 12 4	7 13 16	5 10 16	1 9 2	29 11 32	13 5 16	5 17 8	1 17 8	3 4	1 12 4
FS150 FS200	12 X 12	3 19 8	3 20 8	5 15 8	7 13 16	5 10 16	5 12 8	9 15 32	13 5 16	1 20 8	1 17 8	3 4	5 15 8

Date: 01/10/92
Supersedes:

2110-911
Page: 4

BELT DRIVE BLOWER

FUNCTIONAL AND CABINET COMPONENTS

Dwg. No.	Part No.	Description	F S O 8 5 D 4 8 A	F S O 8 5 D 4 8 A	F S O 1 0 D 4 8 A	F S O 1 2 B 4 8 A	F S O 1 5 B 4 8 A	F S O 2 0 B 4 8 A	F S O 5 0 B 4 8 A	F S O 8 0 B 4 8 A
1	9048-001	Top Panel	X	X						
1	9048-002	Top Panel			X					
1	9048-003	Top Panel				X	X			
1	9048-004	Top Panel						X		
1	9048-005	Top Panel								X
2	9048-006	Front Left Panel	X	X	X					
2	9048-007	Front Left Panel				X	X	X		
2	9048-008	Front Left Panel								X
5	9048-009	Front/Back Blower Door	X	X						
5	9048-010	Front/Back Blower Door			X					
5	9048-011	Front/Back Blower Door				X	X			
5	9048-012	Front/Back Blower Door						X		
5	9048-013	Front Blower Door								X
6	9048-014	Motor--Direct Drive 1/3 HP	X	X	X				X	
6	8105-001	Motor--Belt Drive 1/3 HP					X	X		X
6	8106-001	Motor--Belt Drive 1/2 HP					X	X		X
7	5501-001	Cast Iron Motor Pulley--1/2" Bore (For 1/3 - 1/2 HP Belt)					X	X	X	X
9	9048-015	Blower Assembly W/1/3 HP Belt Drive Motor (With belt and pulleys)							X	
9	9048-016	Blower Assembly W/1/2 HP Belt Drive Motor (With belt and pulleys)				X	X			
9	9048-017	Blower Assembly W/1/2 HP Belt Drive Motor (With belt and pulleys)								X
9	9048-018	Blower Assembly W/1/3 HP Direct Drive Motor (With Capacitor)	X	X	X					
10	9048-019	Blower With Legs and Motor Bracket 10x10	X	X	X					
10	9048-020	Belt Drive Blower With Legs and Motor Mount 12x9				X	X			
10	9048-021	Belt Drive Blower With Legs and Motor Mount 12x12							X	X
11	5501-012	Fan Pulley 6 x 3/4							X	
11	5501-013	Fan Pulley 7 x 3/4				X	X			X
14	9048-022	Corner Post	X	X	X	X	X	X		
14	9048-023	Inlet Corner Post Front								X
15	9048-024	Blower Mount For 10x10 Blower (Front & Rear, Same)	X	X						
15	9048-025	Blower Mount For 10x10 Blower (Front & Rear, Same)			X					
15	9048-026	Front Blower Mount								X
15	9048-027	Rear Blower Mount								X
17	9048-028	Front Center Panel	X	X						
17	9048-029	Front Center Panel			X					
17	9048-030	Front Center Panel				X	X			
17	9048-031	Front Center Panel						X		
17	9048-032	Front Center Panel								X
19	9048-033	Bottom Panel	X	X						
19	9048-034	Bottom Panel			X					
19	9048-035	Bottom Panel				X	X			
19	9048-036	Bottom Panel						X		
19	9048-037	Bottom Panel								X

Date: 08/25/92
Supersedes: 01/10/92

FUNCTIONAL AND CABINET COMPONENTS

Dwg. No.	Part No.	Description	F S O 8 5 D 4 8 A	F S O 8 5 D 4 8 A	F S O 1 0 D 4 8 A	F S O 1 2 B 4 8 A	F S O 1 2 B 4 8 A	F S O 1 5 B 4 8 A	F S O 2 0 B 4 8 A
20	9048-038	Burner Mounting Gasket	X	X	X	X	X	X	X
21	9048-022	Corner Post	X	X	X	X	X	X	
21	9048-040	Outlet Corner Post Front/Back							X
22	9048-041	Heat Exchanger (Complete With Combustion Chamber & Cover Plates)	X	X					
22	9048-042	Heat Exchanger (Complete With Combustion Chamber & Cover Plates)			X				
22	9048-043	Heat Exchanger (Complete With Combustion Chamber & Cover Plates)				X	X		
22	9048-044	Heat Exchanger (Complete With Combustion Chamber & Cover Plates)						X	
22	9048-045	Heat Exchanger (Complete With Combustion Chamber & Cover Plates)							X
23	9048-022	Corner Post	X	X	X	X	X	X	
23	9048-040	Outlet Corner Post Front/Back							X
24	9048-048	Back Left Panel	X	X	X				
24	9048-049	Back Left Panel				X	X		
24	9048-050	Back Left Panel						X	
24	9048-051	Back Left Panel							X
25	9048-052	Back Center Panel	X	X					
25	9048-053	Back Center Panel			X				
26	9048-009	Front/Back Blower Door	X	X					
26	9048-010	Front/Back Blower Door			X				
26	9048-011	Front/Back Blower Door				X	X		
26	9048-012	Front/Back Blower Door						X	
26	9048-058	Back Blower Door							X
28	9048-022	Corner Post	X	X	X	X	X	X	
28	9048-060	Inlet Corner Post Back							X
29	9048-061	Filter Rack Assembly			X	X	X	X	
30	9048-062	Rear Center Filter Angle							X
34	8402-042	Fan & Limit Control (Not Shown)	X	X	X	X	X	X	X
35	9048-063	Draft Regulator	X	X	X	X	X	X	
35	9048-064	Draft Regulator							X
40	9048-079	Relay, Motor Switching (Single Pole Double Throw)	X	X	X	X	X	X	X
52	9048-065	Rear Cover Plate	X	X	X				
60	9048-066	Combustion Chamber (Alumina Silica)	X	X					
60	9048-067	Combustion Chamber (Alumina Silica)			X				
60	9048-068	Combustion Chamber (Alumina Silica)				X	X		
60	9048-069	Combustion Chamber (Alumina Silica)						X	
60	9048-070	Combustion Chamber (Stainless Steel)							X

Date: 08/25/92
Supersedes: 01/30/92

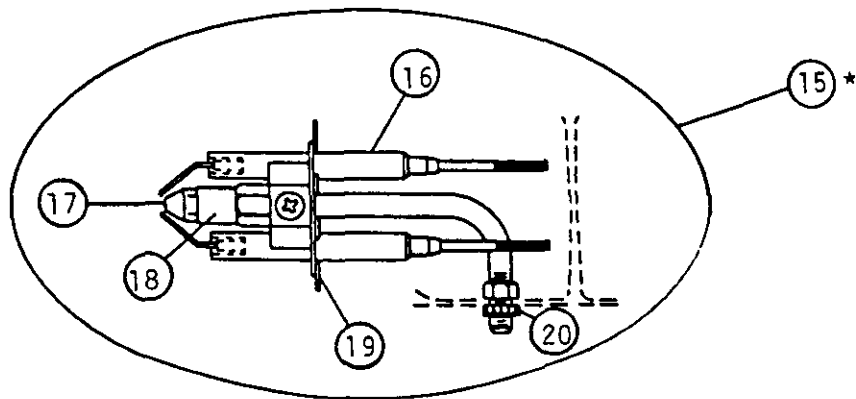
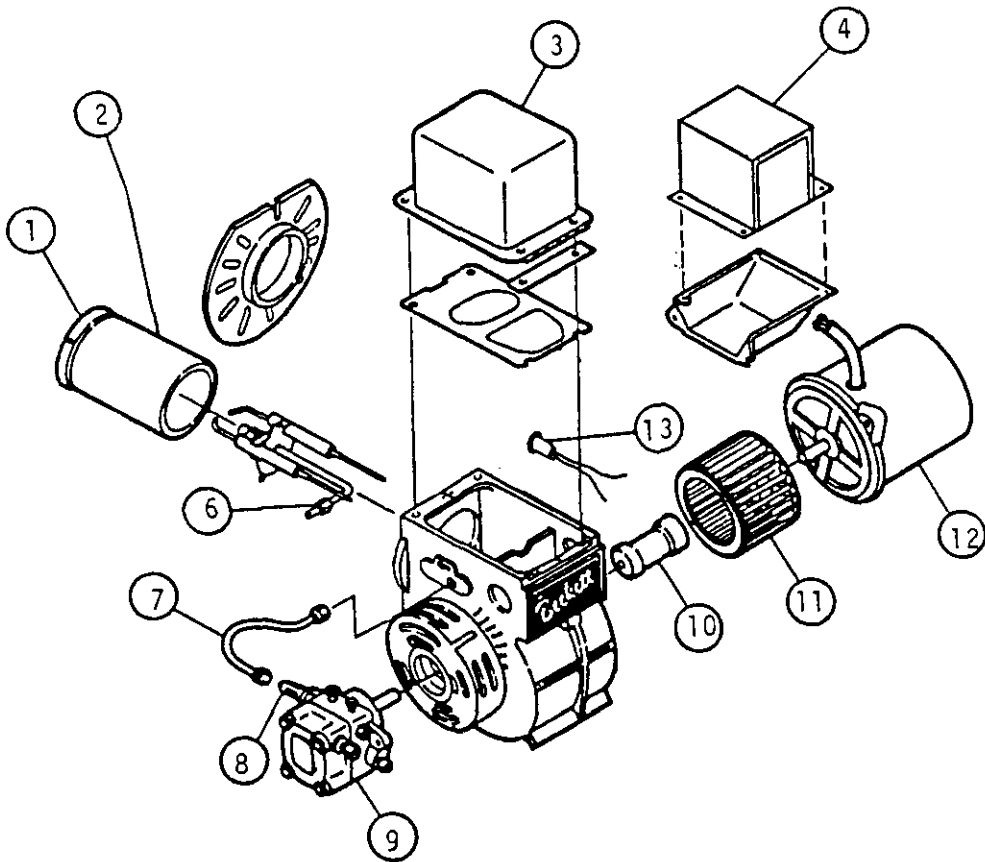
BLOWER ASSEMBLY

Dwg. No.	Part No.	Description	F S O 8 5 D 4 8 A	F S O 8 5 D 4 8 A	F S 1 0 0 D 4 8 A	F S 1 1 2 B 4 8 A	F S 1 2 2 B 4 8 A	F S 1 5 0 B 4 8 A	F S 2 0 0 B 4 8 A
72	9048-080	Blower Wheel 10x10 Concave 1/2" Bore Direct Drive	x	x	x				
72	9048-081	Blower Wheel 12x9x3/4" Bore Belt Drive				x	x		
72	9048-082	Blower Wheel 12x12x3/4" Bore Belt Drive						x	x
77	9048-071	Belly Band Motor Mount For 48 Frame Motor & 10" Blower (Inc. #78 - 83)	x	x	x				
84	9048-072	Shaft (3/4" diameter)				x	x		
84	9048-073	Shaft (3/4" diameter)						x	x
86	9048-074	Bearing (3/4" bore)				x	x	x	x
87	9048-075	Bearing Insulator				x	x	x	x
88	9048-076	Bearing Bracket				x	x	x	x

Date: 08/25/92
Supersedes: 01/10/92

Furnace Model	FS085D48A	FS100D48A	FS125B48A	FS150B48A
Burner Model	BBFS085	BBFS100	BBFS125	BBFS150

BECKETT
BURNER REPLACEMENT PARTS
OIL BURNERS



NOZZLE LINE ELECTRODE ASSEMBLY

*Nozzle is not included in assembly.

Date: 08/25/92
Supersedes: 01/10/92

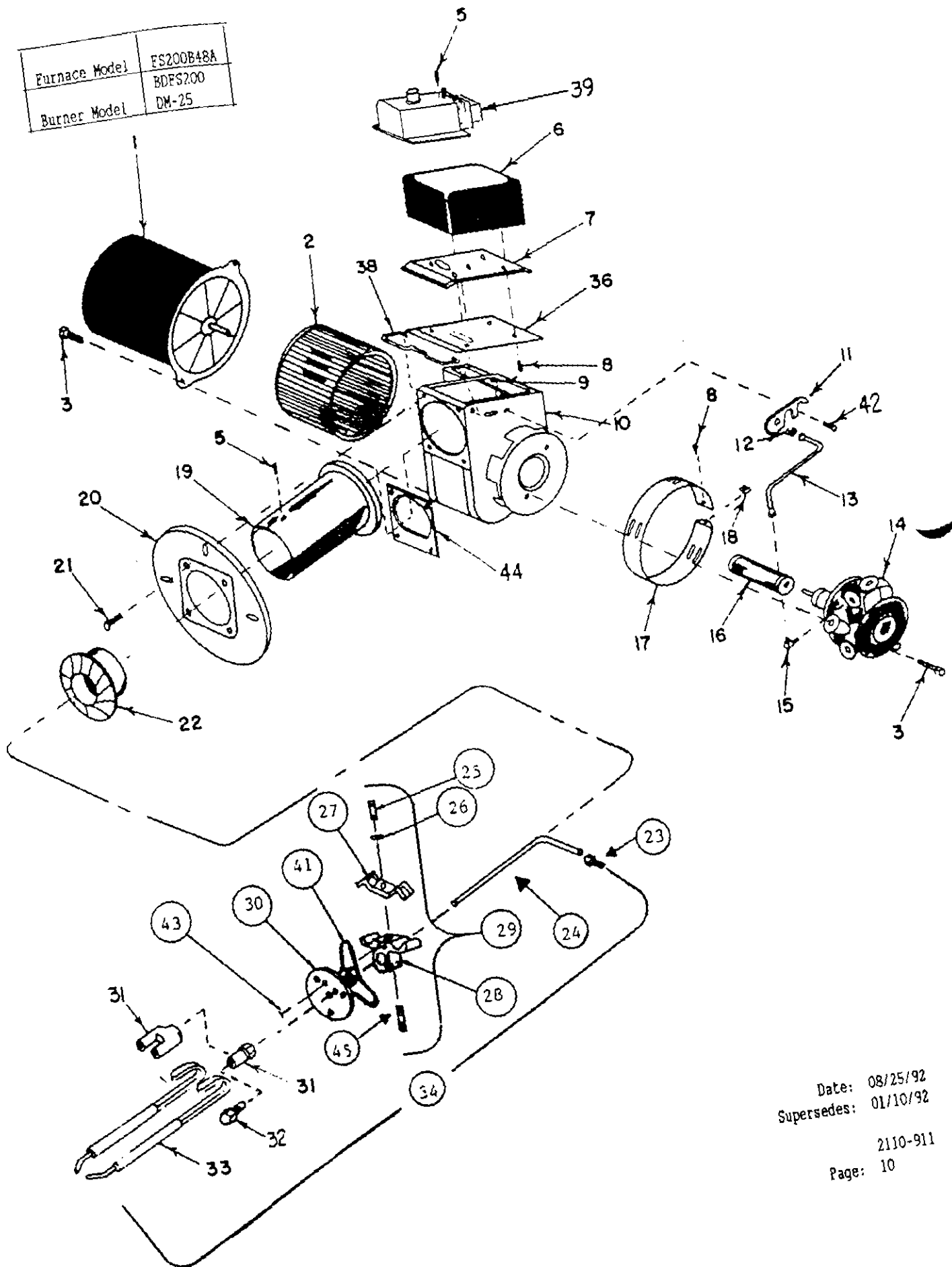
BECKETT BURNER REPLACEMENT PARTS

Dwg. No.	Part No.	Beckett Part No.	Description	F 8 5 D 4 8 A	F S 0 1 0 D 4 8 A	F S 1 2 5 B 4 8 A	F S 1 5 0 B 4 8 A
1	9022-003	F3	Head	x	x		
1	9022-042	F6	Head			x	x
NS	9022-048	31517	Ceramic Heat Shield For Burner Head	x	x	x	x
NS	9022-049	3716	Retainer For Ceramic Heat Shield	x	x	x	x
NS	9022-050	51360	F3 Head Kit W/31517 Heat Shield and 3716 Retainer	x	x		
NS	9022-051	51361	F6 Head Kit W/31517 Heat Shield and 3716 Retainer			x	x
2	9022-043	AF47YBBS	Air Tube	x	x		
2	9022-044	AF67YBBS	Air Tube			x	x
3	9022-022	5878U	Ignition Transformer W/Gasket	x	x	x	x
4	9048-103		Burner Primary Control R8184M	x	x	x	x
6	9022-007	571801	Bulkhead Fitting	x	x	x	x
7	9022-008	5636	Connector Tube	x	x	x	x
8	9022-009	2256	Pump Outlet Elbow	x	x	x	x
9	9022-010	2460U	Pump 1-Stage	x	x		
9	9022-041	2583	Pump 2-Stage			x	x
10	9022-011	2454	Coupling	x	x	x	x
11	9022-045	2999U	Blower Wheel	x	x	x	x
12	9022-013	2456U	Motor 3450 RPM	x	x	x	x
13	8400-004	7006U	Flame Detector C554A	x	x	x	x
15	9022-046	NL47YB	Nozzle Line Electrode Assembly	x	x		
15	9022-047	NL67YB	Nozzle Line Electrode Assembly			x	x
16	9022-017	5780	Electrode Insulator Assembly	x	x	x	x
17	9011-012		.75 GPH Nozzle 70 deg. Hollow	x			
17	9011-013		.90 GPH Nozzle 70 deg. Hollow		x		
17	9011-014		1.10 GPH Nozzle 70 deg. Hollow			x	
17	9011-015		1.35 GPH Nozzle 70 deg. Hollow				x
18	9022-016	213U	Nozzle Adapter	x	x	x	x
19	9022-023	3384P	Static Plate 3-3/8"	x	x		
19	9022-035	3383P	Static Plate 2-3/4"			x	x
20	9022-018	3666	Bulkhead Fitting Lockout	x	x	x	x

NS = Not Shown

Date: 07/13/92
Supersedes: 01/10/92

Furnace Model	FS200B48A
Burner Model	BDFS200 DM-25



Date: 08/25/92
Supersedes: 01/10/92

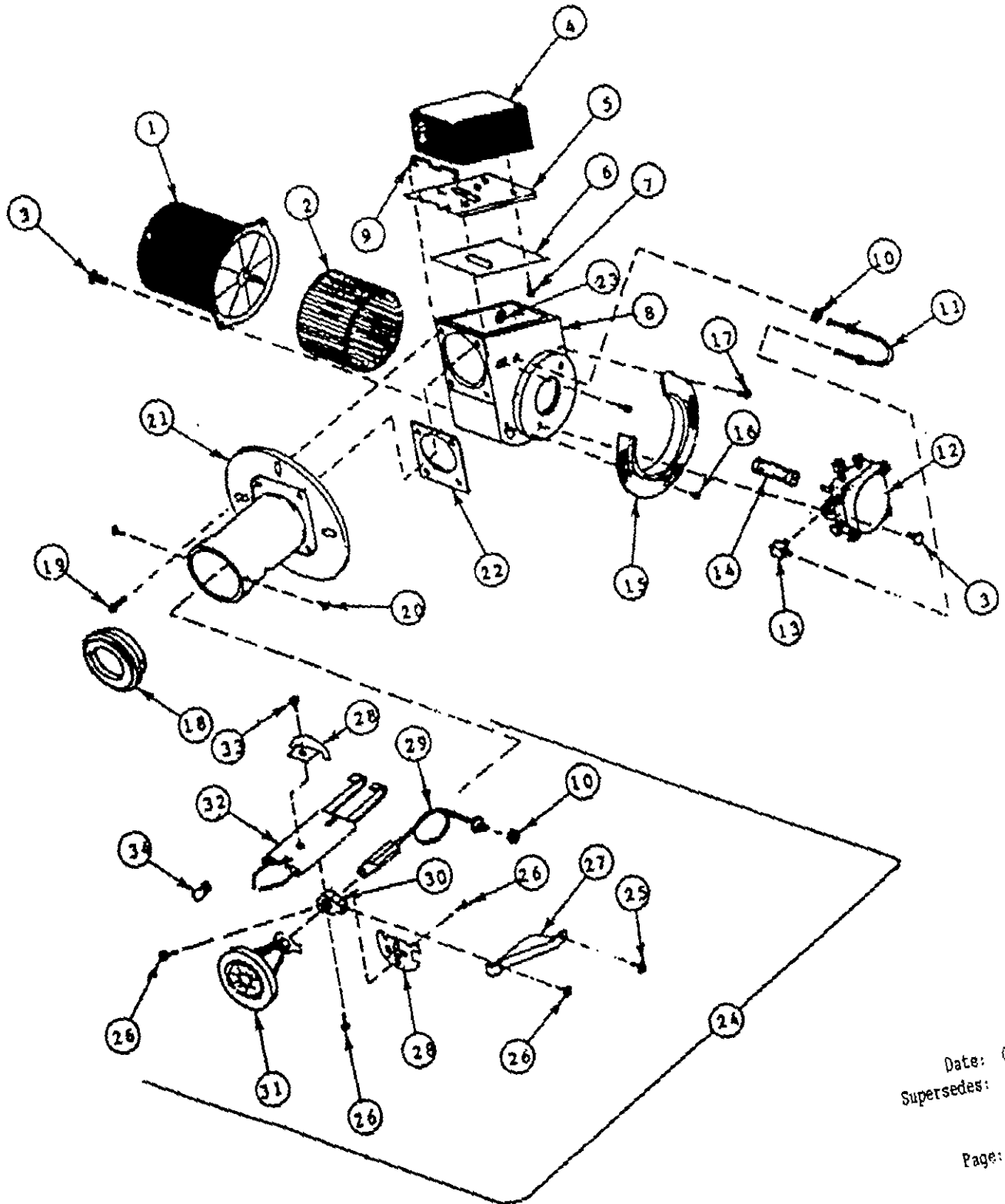
2110-911
Page: 10

DUCANE BURNER COMPONENTS

Dwg. No.	Part No.	Description	F S 2 0 0 B 4 8 A
1	9022-013	Motor (Fraction HP 115V, 60 Cycle, 3450 RPM)	X
2	9048-083	Blower Wheel	X
6	9048-084	Transformer (115V Primary--10,000 Volt Secondary)	X
14*	9022-041	Fuel Pump (Two Stage)	X
16	9022-011	Coupling	X
19	9048-085	Air Tube (7" Free Tube Length)	X
22	9048-086	End Cone 2-3/4" Dia. (For DM-25 Burners)	X
23	9048-097	Adapter (Oil Pipe)	X
24	9048-087	Oil Pipe (7" Free Tube Length)	X
28	9048-088	Oil Pipe/Electrode Support	X
29	9048-089	Oil Pipe/Electrode Support Assembly	X
30	9048-090	Static Disc 2-1/4" Dia. (For DM-25 Burners)	X
31	9048-095	Adapter, Nozzle (Single)	X
32	9048-096	Nozzle 1.75 GPH 80° Solid	X
33	9048-091	Electrode Assembly (Left & Right) (7" Free Tube Length)	X
34	9048-092	Electrode--Oil Pipe Assy For DM-25 (7" Free Tube Length)(Less Nozzle)	X
36	9048-093	Transformer Mounting Plate Gasket	X
39	9048-103	Primary Relay--Honeywell R8184M	X
40	8400-004	Cad Cell--Honeywell (Not Shown) C554A	X
44	9048-094	Blast Tube Gasket	X

Date: 07/13/92
Supersedes: 01/10/92

Furnace Model	FS085D48AX	FS125B48AX
Burner Model	BDFS085 DRC10A	BDFS125 DRC15A



Date: 08/25/92
 Supersedes:
 2110-911
 Page: 12

DUCANE BURNER COMPONENTS

Dwg. No.	Part No.	Description	F S O 8 5 D 4 8 A X	F S 1 2 5 B 4 8 A X
1	9048-124	Motor (Fraction HP 115V, 60 Cycle, 3450 RPM)	X	X
2	9048-083	Blower Wheel	X	X
4	9048-084	Transformer (115V Primary--10,000 Volt Secondary)	X	X
12	9022-010	Fuel Pump (One Stage)	X	
12	9022-041	Fuel Pump (Two Stage)		X
14	9048-104	Coupling	X	X
18	9048-107	Outer Ring	X	X
21	9048-105	Air Tube/Mounting Flange Assy. (5" Free Tube Length)	X	
21	9048-106	Air Tube/Mounting Flange Assy. (7" Free Tube Length)		X
22	9048-094	Blast Tube Gasket	X	X
24	9048-111	Drawer Assembly (5")	X	
24	9048-112	Drawer Assembly (7")		X
27	9048-113	Support Bracket Electrode Holder (5")	X	
27	9048-114	Support Bracket Electrode Holder (7")		X
28	9048-115	Static Disc 3-3/8" (Top and Bottom)	X	
28	8400-116	Static Disc 2-5/8" (Bottom Only)		X
29	9048-108	Oil Supply Pipe (Internal -5")	X	
29	9048-109	Oil Supply Pipe (Internal -7")		X
30	9048-110	Electrode Holder	X	X
31	9048-117	Turbulator Assembly T1	X	
31	9048-118	Turbulator Assembly T4		X
32	9048-119	Electrode Assembly (5")	X	
32	9048-120	Electrode Assembly (7")		X
34	9048-121	Nozzle .75 GPH 80° Solid	X	
34	9048-122	Nozzle 1.10 GPH 80° Solid		X
35*	9048-123	Cad Cell 68" Leads	X	X

*Not Shown

Date: 08/25/92
Supersedes:

