

# REPLACEMENT PARTS MANUAL

## OIL FIRED FURNACE

MODELS: FUS150D60A, FUS200D60A

Manual 2110-916

Revision

Date 05-02-94

Supersedes

\*\*\*\*\*  
\* GENERAL NOTES \*  
\*\*\*\*\*

\*Revised and/or additional pages may be issued from time to time.  
\*A complete and current manual consists of pages dated as shown in the following index.

\*\*\*\*\*  
\*\* INDEX \*\*  
\*\*\*\*\*

<u>Page Description</u>	<u>Page</u>	<u>Date</u>	<u>Supersedes</u>
Cabinet Components--Exploded View	1	05-02-94	
" " --Usage List	2	05-02-94	
Heat Exchanger/Blower Assemblies--Exploded View	3	05-02-94	
" " " " -- Usage List	4	05-02-94	
Burner Components--Exploded View	5	05-02-94	
" " --Usage List	6	05-02-94	
Furnace/Burner Specification Chart	7	05-02-94	

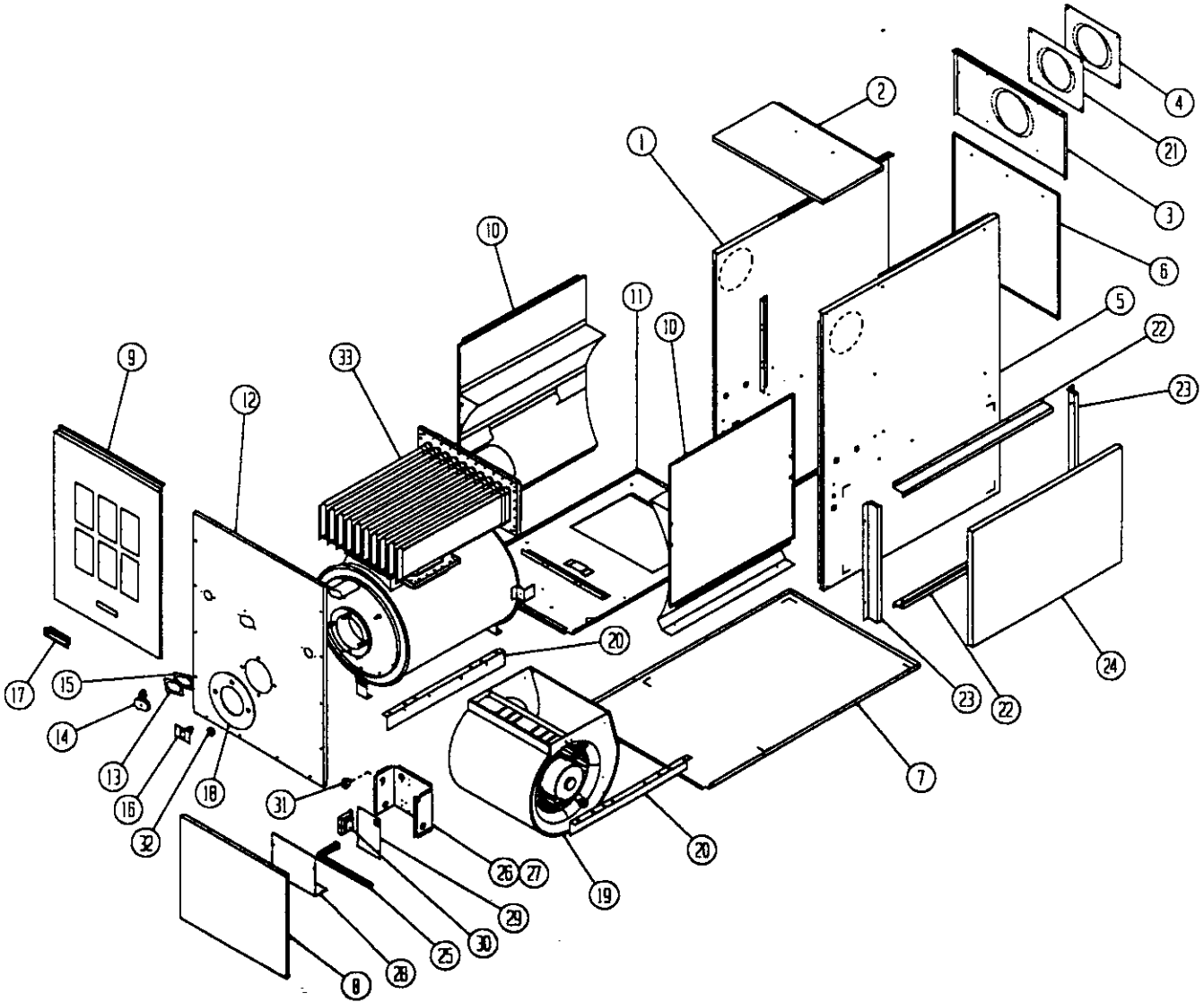
\*\*\*\*\*  
\*\*\* IMPORTANT \*\*\*  
\*\*\*\*\*

Contact the installing and/or local Bard distributor for all parts requirements. Make sure you have the complete model and serial number available from the unit rating plate.

BARD MANUFACTURING COMPANY

BRYAN, OHIO 43506

CABINET COMPONENTS



Date: 05-02-94  
Supersedes:

CABINET COMPONENTS

Dwg. No.	Part No.	Description	FUS150D60A	FUS200D60A
1	9048-128	Left Side Panel (Includes No. 10)	X	X
2	9048-129	Top Panel	X	X
3	9048-130	Back Top Panel	X	X
4	9048-131	Rosette, Flue Outlet	X	X
5	9048-132	Right Side Panel (Includes No. 10)	X	X
6	9048-133	Back Bottom Panel	X	X
7	9048-134	Bottom Panel	X	X
8	9048-135	Blower Door	X	X
9	9048-136	Front Door	X	X
10	9048-137	Side Shield	2	2
11	9048-138	Partition Panel	X	X
12	9048-139	Intermediate Panel	X	X
13	9048-140	Rosette Observation Tube	X	X
14	9048-141	Observation Door	X	X
15	9048-142	Gasket, Rosette Observation Tube	X	X
16	9048-143	Limit Control (150) with Insulator	2	2
17	9048-144	Door Handle	X	X
18	9048-145	Burner Mounting Gasket	X	X
19	9048-146	Blower Assembly with 3/4 HP PSC Motor	X	X
20	9048-147	Blower Leg	2	2
21	9048-148	Gasket, Rosette Flue Outlet	X	X
22	9048-149	Filter Top and Bottom Panel	2	2
23	9048-150	Filter Rear and Access Panel	2	2
23	9048-151	Filter Rear and Access Panel	2	2
24	9048-152	Filter	X	X
25	9048-153	Wire Harness	X	X
26	9048-154	Control Assembly (Includes Nos. 27 - 31)	X	X
27	9048-155	Control Box	X	X
28	9048-156	Cover, Control Box	X	X
29	9048-157	Control, Fan Timer	X	X
30	9048-158	Transformer, 40VA	X	X
31	9048-159	Continuous Low Speed Fan Switch	X	X
33	9048-160	Heat Exchanger (Includes Nos. 34 - 53)	X	X

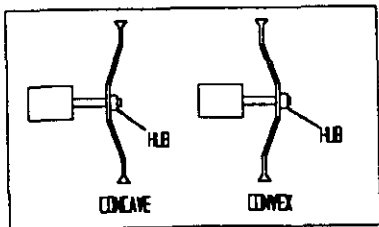
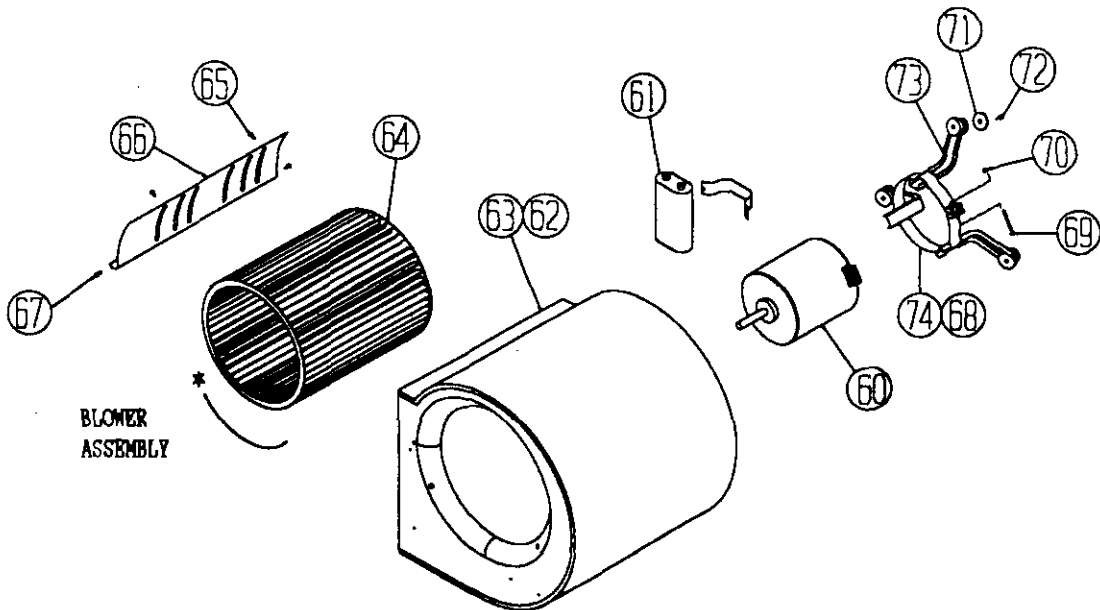
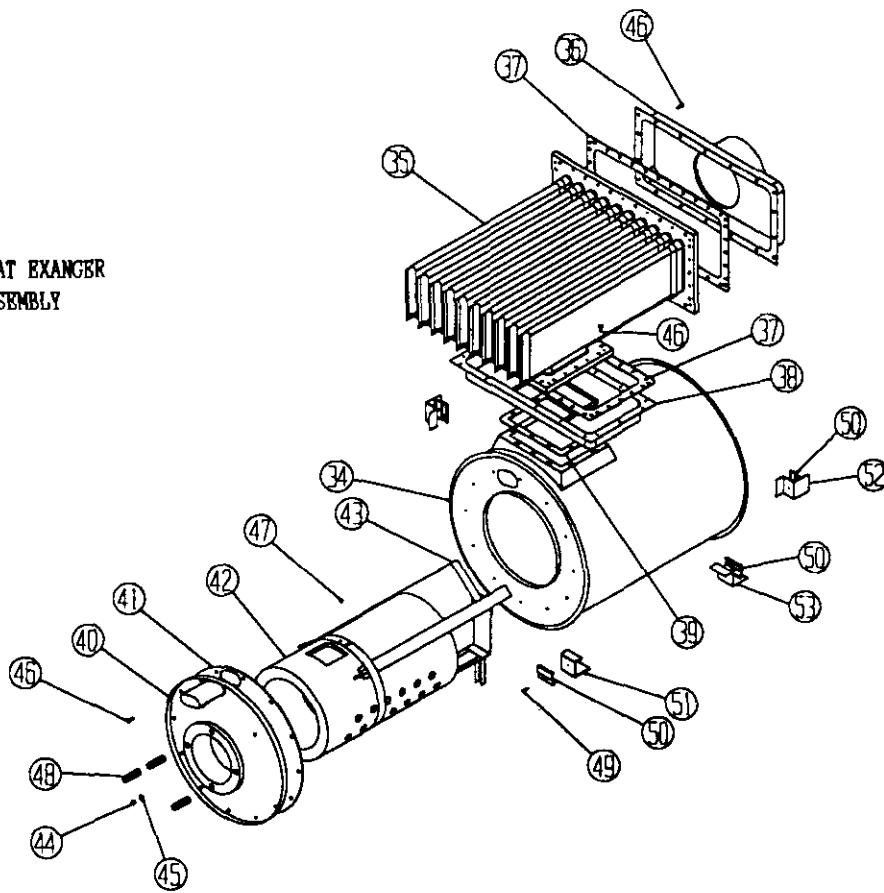
NOTE: Items shown in exploded views and not listed are standard hardware items available in field.

Date: 05-02-94  
Supersedes:

2110-916  
Page: 2

HEAT EXCHANGER AND BLOWER ASSEMBLIES

HEAT EXANGER  
ASSEMBLY



\* CLOCKWISE WHEEL ROTATION AS  
DETERMINED BY VIEWING HUB SIDE

Date: 05-02-94  
Supersedes:

2110-916  
Page: 3

## HEAT EXCHANGER ASSEMBLY

Dwg. No.	Part No.	Description	FUS150D60A	FUS200D60A
34	#	Heat-X Primary Drum	X	X
35	#	Heat-X Secondary Tube Section	X	X
36	9048-163	Flue Box	X	X
37	9048-164	Gasket, Tube Plate	2	2
38	#	Box, Drum Collector	X	X
39	#	Gasket, Drum Outlet	X	X
40	9048-167	Bottom Cover Plate	X	X
41	9048-168	Gasket, Bottom Cover	X	X
42	9048-169	Combustion Chamber	X	X
43	9048-170	Band, Chamber Mounting	X	X
48	9048-171	Stud, Burner Mount	3	3
50	9048-172	Leg Clamp	4	4
51	9048-173	Bottom Front Leg	X	X
52	9048-174	Side Leg	2	2
53	9048-175	Bottom Rear Leg	X	X
54	9048-176	Draft Regulator (Not Shown)	X	X

NOTE: Items shown in exploded views and not listed are standard hardware items available in field.  
# included in item 33, Heat-X assembly.

## BLOWER ASSEMBLY

Dwg. No.	Bard Part No.	Description	FUS150D60A	FUS200D60A
60	9048-177	Motor, 3/4 PSC 3 Speed Direct Drive	X	X
61	9048-178	Capacitor with Boot and Clamp 15.0 MFD	X	X
62	9048-179	Blower with Legs and Motor Mount 12 x 12	X	X
63	9048-180	Blower Housing 12 x 12	X	X
64	9048-181	Blower Wheel 12 x 12 Concave 1/2" Bore	X	X
66	9048-182	Cutoff 12 x 12	X	X
68	9048-183	Belly Band Motor Mount 12" Blower	X	X
73	9048-184	Motor Mount Arm 12" Blower	3	3
74	9048-185	Motor Mount Band	X	X

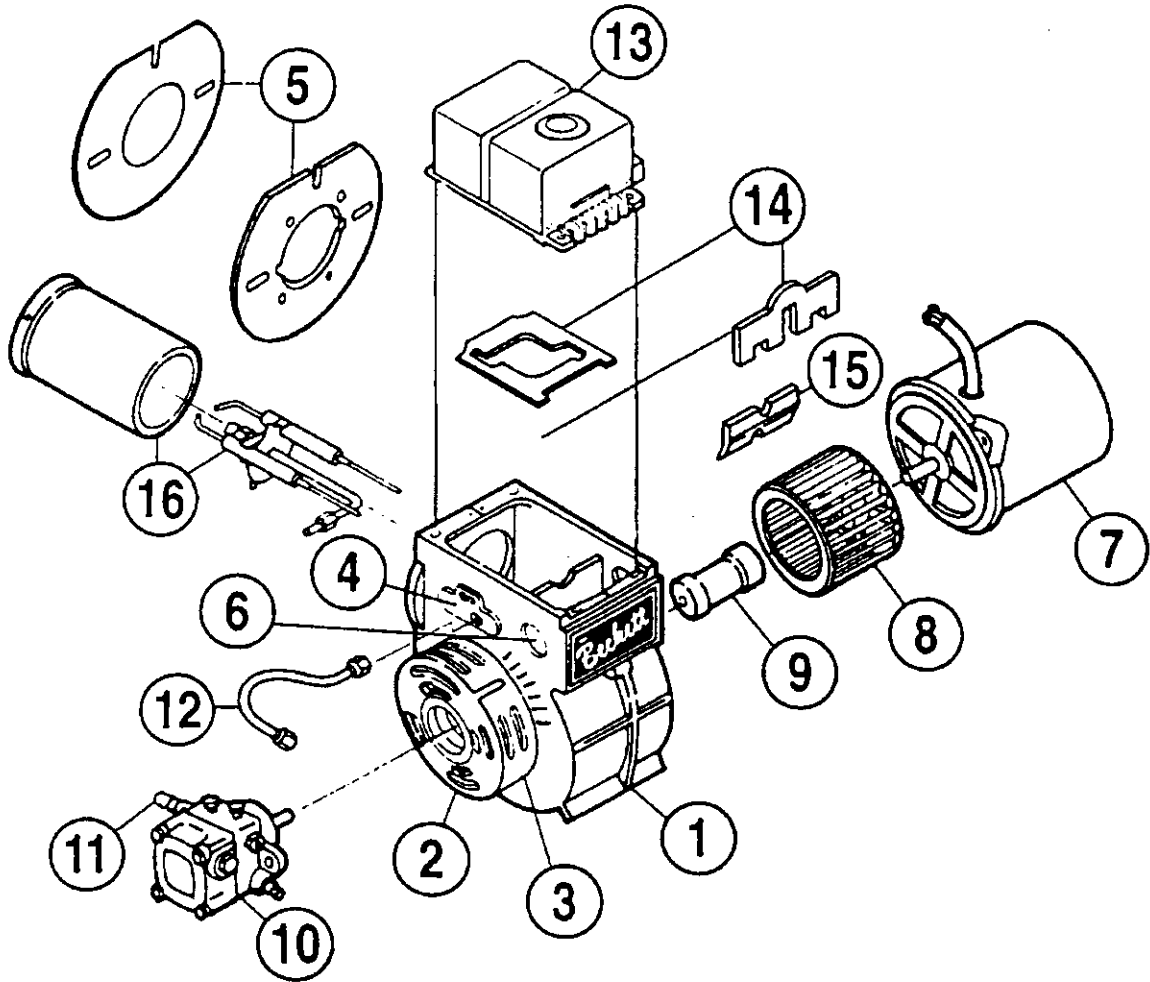
NOTE: Items shown in exploded views and not listed are standard hardware items available in field.

Date: 05-02-94  
Supersedes:

2110-916

Page: 4

BURNER COMPONENTS



Date: 05-02-94  
Supersedes:

BURNER COMPONENTS

Dwg. No.	Bard Part No.	Beckett Part No.	Description	FUS150D60A	FUS200D60A
1		5877	Burner Housing Assembly	X	X
2*		3709	Air Shutter	X	X
		4198	Retaining Screw	X	X
3*		5151501	Air Band	X	X
		4198	Screw	X	X
		4150	Nut	X	X
4*		3493	Escutcheon Plate	X	X
		4292	Screw	X	X
5		31429BK	Flange	X	X
		31428	Flange, Gasket	X	X
6*		2139	Hole Plug	X	X
7	9022-013	2456	Drive Motor	X	X
		4189	Mounting Screws	X	X
8	9022-045	2999	Blower Wheel (Use Only RWB Replacement)	X	X
9	9022-011	2454	Coupling	X	X
10	9022-010	2460	Fuel Unit -- Single Stage (Suntec)	X	X
	9022-041	2583	-- Two Stage (Suntec)	X	X
		4189	-- Mounting Screws	X	X
11	9022-009	2256	Pump Nozzle Port Fitting	X	X
12	9022-008	5636	Connector Tube Assembly	X	X
13	9022-063	51580	Ignitor/Control Assembly	X	X
		4255	Hinge Screws	X	X
		4292	Holding Screws	X	X
14	9022-064	51521	Transformer Gasket Kit	X	X
15*		5880	Low Firing Baffle	X	X
16	9022-059	AF67XORS	Air Tube Combination	X	X
	9022-060	3294073BK	Air Tube	X	X
	9022-061	NL67XO	Nozzle Electrode Assembly	X	X
	9022-062	51656	Firing Head**	X	X
	9022-017	5780	Electrode Kit	X	X
Not	9022-048	31517	Ceramic Heat Shield**	X	X
Shown	9022-049	3716	Retainer**	X	X

\* These items included in 5877 Burner Housing Assembly.

\*\* Firing head requires Ceramic Heat Shield and Retainer.

When ordering parts--state Beckett burner model, part description and part number.

Date: 05-02-94  
Supersedes:

FURNACE/BURNER SPECIFICATION CHART  
Beckett AFG Burner

Bonnet Capacity	Model	Burner Spec No.	Air Tube No.	Head**	Static Plate	Air * Shutter Setting	Air * Band Setting	Nozzle	Pump Stage
150,000	Upflow/ Horizontal	DU203	AF 67XO HS	F12	2-3/4	10	1/4	1.35 x 70 Deg. Solid	2
200,000	Upflow/ Horizontal	DU203	AF 67XO HS	F12	2-3/4	10	1/4	1.75 x 70 Deg. Solid	2

\* Air shutter and band settings are factory settings and must be adjusted for individual installations.  
\*\* Requires Ceramic Heat Shield 31517 (Bard 9022-048) and Retainer 3716 (Bard 9022-049).

Date: 05-02-94  
Supersedes: