
Replacement Parts Manual

General Accessory Electronic Air Cleaner

Models: EC14, EC20,
EC14A, EC20A

General Notes

- Revised and/or additional pages may be issued from time to time.
- A complete and current manual consists of pages shown in the following contents section.

Important

- Contact the installing and/or local Bard distributor for all parts requirements. Make sure you have the complete model and serial number available from the unit rating plates.

Contents

Description	Page
EC14, EC20 Functional Components	
• Exploded View	1
• Usage List	2
 EC14A, EC20A Functional Components	
• Exploded View	1
• Usage List	2

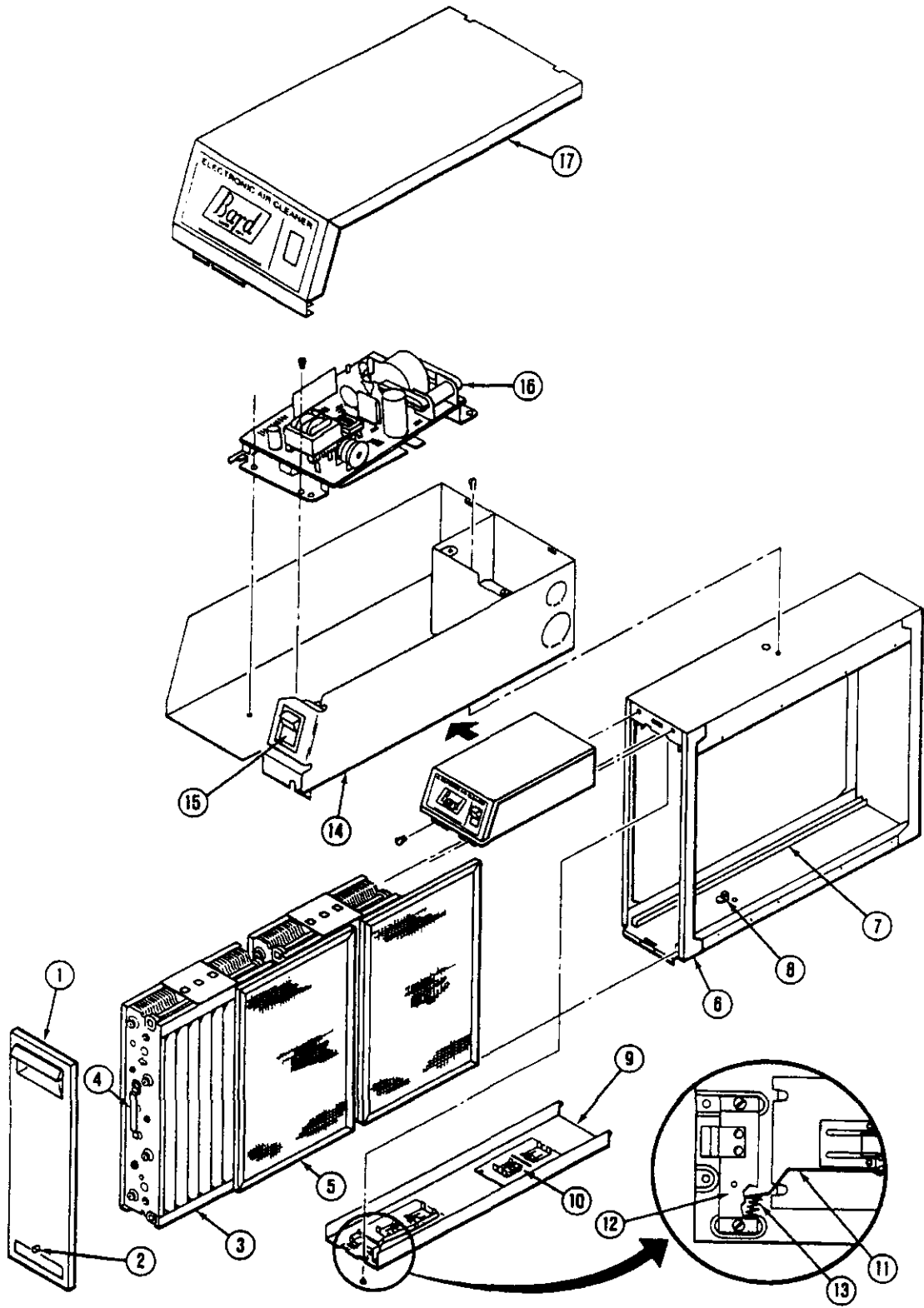


BARD MANUFACTURING COMPANY
Bryan, Ohio 43506

Since 1914...Moving, ahead just as planned.

Manual: 2110-953D
Supersedes: 2110-983C
File: Tab 9
Date: 10-13-98

FUNCTIONAL COMPONENTS EC14, EC20

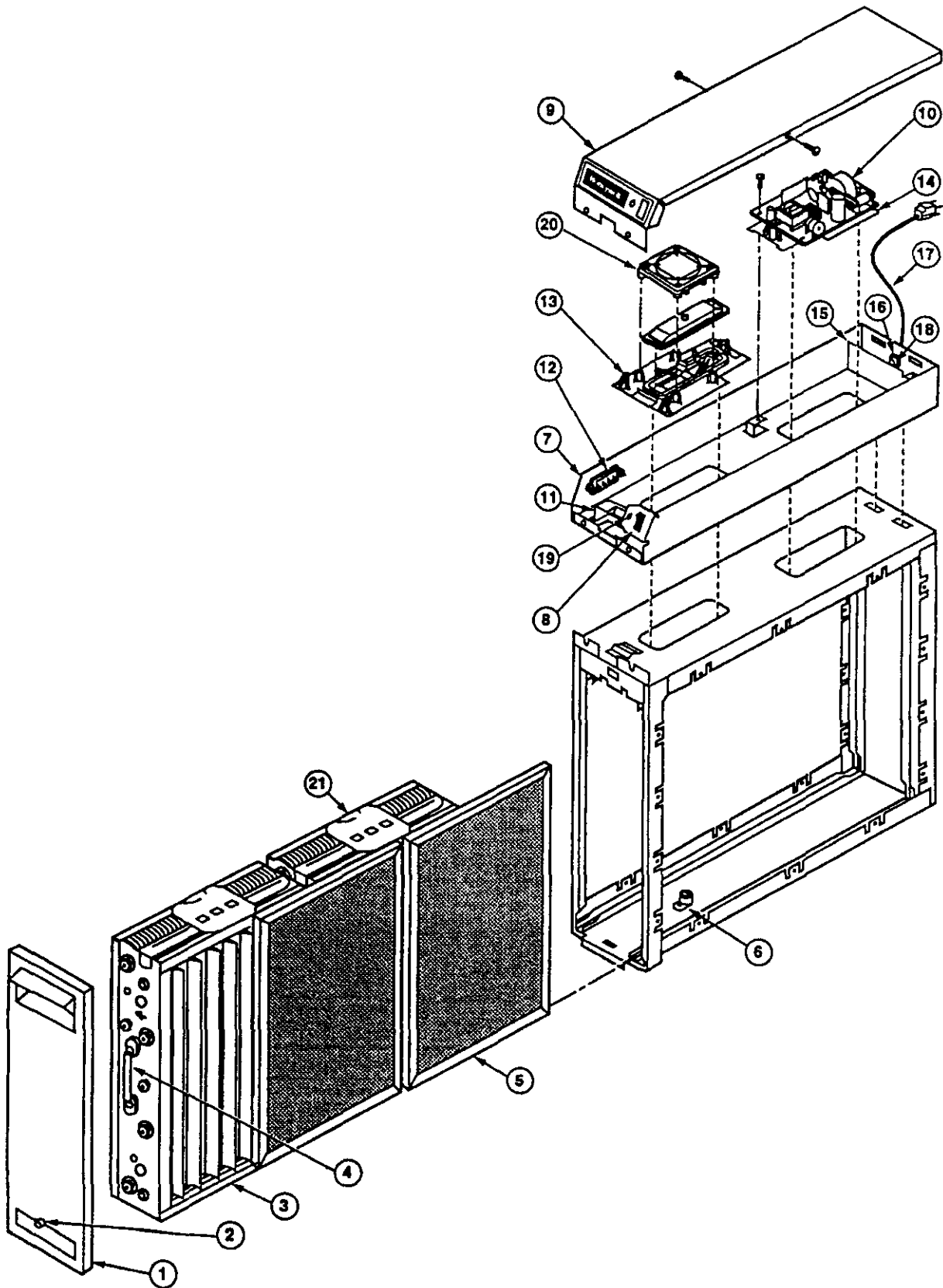


FUNCTIONAL COMPONENTS EC14, EC20

Dwg. No.	Part No.	Description	EC14	EC20
2	8610-039	Test Button 137980A	X	X
3	8610-015	Electronic Cell FC37A1130	2	
3	8610-016	Electronic Cell FC37A1064		2
4	8610-017	Cell Handle 137266	2	2
5	8610-018	Protective Screen 136388	2	
5	8610-019	Protective Screen 136389		2
8	8610-020	Cell Key 136518	X	X
10	8610-021	Contact Board 136383A	2	2
11	8610-022	Shorting Arm 136387A	X	X
12	8610-023	Shorting Arm Bracket 136382A	X	X
13	8610-024	Shorting Arm Spring 136517	X	X
		(INCLUDES ITEMS 15 THROUGH 17)		
14	8610-038	Power Box Assembly 136397K	X	
14	8610-040	Power Box Assembly 136397J		X
15	8610-025	Switch/Indicator Light 199840	X	X
16	8610-046	Power Supply 208425A	X	X
NS	8610-034	Ionizer Assembly 136434AA		X
NS	8610-035	Ionizer Assembly 136434BA	X	

NS = Not Shown

FUNCTIONAL COMPONENTS EC14A, EC20A



FUNCTIONAL COMPONENTS EC14A, EC20A

Dwg. No.	Part No.	Description	EC14A	EC20A
2	8610-039	Test Button 137980A	X	X
3	8610-015	Electronic Cell FC37A1130	2	
3	8610-016	Electronic Cell FC37A1064		2
4	8610-017	Cell Handle 137266	2	2
5	8610-018	Protective Screen 136388	2	
5	8610-019	Protective Screen 136389		2
6	8610-020	Cell Key 136518	X	X
		(INCLUDES ITEMS 8 THROUGH 20)		
7	*	Power Box Assembly 203314L	X	
7	*	Power Box Assembly 203314K		X
8	8610-041	Switch 203321	X	X
10	8610-042	Power Supply 203101B	X	
10	8610-043	Power Supply 203101A		X
11	*	Interlock Bracket and Switch 4074ETG	X	X
12	*	W8600 Terminal Strip 200546C	X	X
13	*	Terminal Board Assembly 203329B	X	X
14	*	Terminal Board Assembly 203329A	X	X
15	*	Barrier Plate 203331	X	X
17	*	Line Coard 4074ETD	X	X
19	8610-044	Neon Assembly 4074ETE	X	X
20	8610-045	Airflow Switch 4074ETH	X	X
NS	8610-035	Ionizer Assembly 136434BA	X	
NS	8610-034	Ionizer Assembly 136434AA		X

NS Not Shown

* Contact factory for information

